

4 Shepherd Street, Nowra

Where Comfort Meets Convenience

Scott Lummas of LJ Hooker Nowra is delighted to present 4 Shepherd Street Nowra.

Positioned for convenience and comfort, this well-presented three-bedroom home offers an ideal opportunity for first home buyers, investors or downsizers alike. Featuring beautiful hardwood flooring throughout the living areas, complemented by carpeted bedrooms for added comfort, the home is equipped with ceiling fans & reverse cycle air conditioning to ensure year-round climate control.

Set on a generous, level block, the property boasts spacious front and rear yards framed by established gardens—perfect for outdoor enjoyment or future enhancement. A single detached garage provides secure parking or additional storage space.

Ideally located just a short three-minute drive to Nowra's CBD and Shoalhaven Memorial Hospital, this property combines lifestyle ease with everyday convenience.

3  1  1 

FOR SALE

Price Guide: \$710,000 - \$740,000

VIEW

By Appointment

AGENTS

Scott Lummas
0407 376 037
scott.lummas@ljhooker.com.au

AGENCY

LJ Hooker Nowra
(02) 4421 2957

All information contained therein is gathered from relevant third parties sources. We cannot guarantee or give any warranty about the information provided. Interested parties must rely solely on their own enquiries.



MORE DETAILS

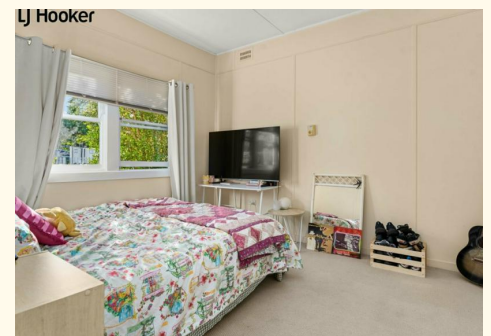
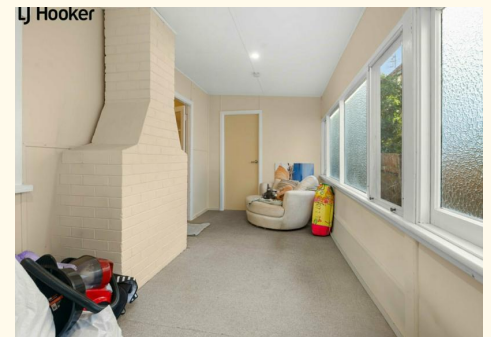
Property ID 6NFHSD
Property Type House
Land Area 686 m2
Including Air Conditioning
Toilets (1)
Deck
Floorboards
Fully Fenced

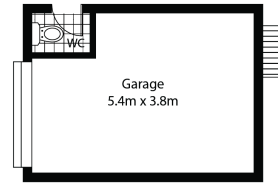
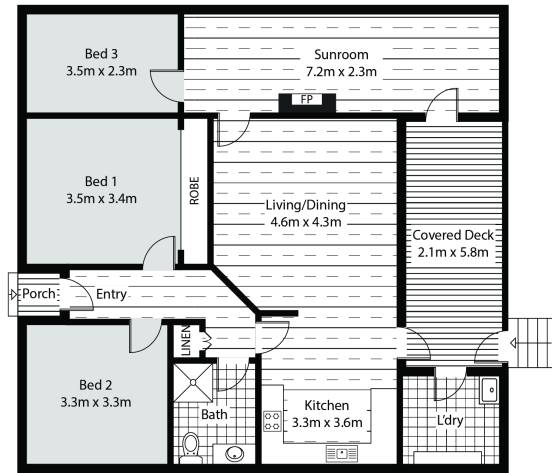
Scott Lummas 0407 376 037

Licensed Real Estate Agent | scott.lummas@ljhooker.com.au

LJ Hooker Nowra (02) 4421 2957

5/38-44 Berry Street, NOWRA NSW 2541
nowra.ljhooker.com.au | nowra@ljhooker.com.au





All attempts have been made to ensure the accuracy of this floor plan.
All measurements of doors, windows, opening direction, room measurements are approximate
and no responsibility is taken for any error, omission or misstatement this plan is for display purposes only and not to scale.
The total floor area is not a guarantee. Should be used as an approximation and not be used on the basis of valuation.

4 Shepherd Street, Nowra