



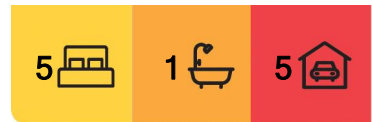
Nowra Hill, 150 Btu Road

Major Price Reduction!!

After 30 years, the vendor has made the difficult decision to move on and leave behind a home that is filled with many amazing and happy memories.

What we have here is 8.4 acres of cleared, fully fenced land divided into 5 paddocks. At present all we have is one lonely cow, so who out there would like to bring along a horse or two, or even some chickens and create a hobby farm for you and the children, and you too can make your own memories here.

Now lets talk about the house, what we have is a 5 bedroom steel framed brick + Colorbond home, 3 living areas, updated kitchen with electric appliances and an updated bathroom that leads off to the main bedroom. Added features are a wood fireplace, 2x R/C A/Cs, fans, built in robes in 3 bedrooms and a 4 door linen closet.



For Sale
\$1,295,000

View
By Appointment

Contact
Peter Rapley
0402 267 411
prapley.nowra@ljhooker.com.au



LJ Hooker Nowra
(02) 4421 2957

Disclaimer: All information contained therein is gathered from relevant third parties sources. We cannot guarantee or give any warranty about the information provided. Interested parties must rely solely on their own enquiries.

Outside the property boasts a 2 car garage, a workshop, 3 carports, a dam, outdoor entertainment area, shipping container, 2 water tanks, outdoor toilet and a wraparound verandah taking in the rural views.

This rare find is located only a short drive to the Nowra C.B.D, Huskisson, Greenwell Point and the amazing beaches the Shoalhaven has to offer.

Please call Peter Rapley on 0402 267 411 to arrange a private inspection.

More About this Property

Property ID	686HSD
Property Type	AcreageSemi-rural
Land Area	8.4 acre
Including	Air Conditioning Toilets (2) Fire Place Dishwasher Outdoor Entertaining Built-in-Robes Secure Parking Fully Fenced Water Tank

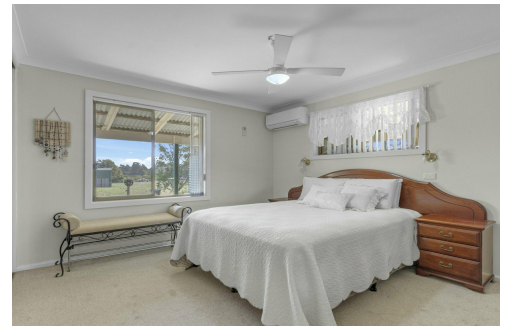
Peter Rapley 0402 267 411

Licenced Real Estate Agent | prapley.nowra@ljhooker.com.au

LJ Hooker Nowra (02) 4421 2957

5/38-44 Berry Street, NOWRA NSW 2541

nowra.ljhooker.com.au | nowra@ljhooker.com.au



LJ Hooker Nowra
(02) 4421 2957

Disclaimer: All information contained therein is gathered from relevant third parties sources. We cannot guarantee or give any warranty about the information provided. Interested parties must rely solely on their own enquiries.



INTERNAL AREA : 243 M²
 EXTERNAL AREA : 206 M²

All information contained in this document is from sources we believe to be accurate, however we cannot guarantee its accuracy. Interested persons should make and rely on their own enquiries in relation to measurements, dimensions, layout, furniture and descriptions.