



Northfield, 6 Thompson Avenue

MODERN LIVING OPPORTUNITY



Welcome to 6 Thompson Street, Northfield, a stunning showcase of modern design and comfort in a newly built home. This impeccable property, completed in 2023, is perfectly crafted for families or professionals looking for a blend of luxury and functionality close to the city.

As you step through the entrance, you are greeted by a sleek interior highlighted by a thoughtful layout that maximizes both space and natural light. With three spacious bedrooms, two luxurious bathrooms, and two versatile living areas plus a study, this home caters to a variety of lifestyles and needs. Each bedroom features spacious wardrobes, with the master suite boasting a private ensuite bathroom

The heart of the home is the open-plan kitchen and dining area, where impeccable finishes meet practical design. The kitchen is equipped with modern appliances, extensive storage solutions, and stunning tiles that complement the stylish floorboards throughout the rest of

For Sale

Under Contract by Gerard Pacillo ph. 0431 596 145

View

ljhooker.com.au/HQTH67

Contact

Gerard Pacillo

0431 596 145
gerard@ljhfp.com.au

Ralph Pacillo

0433 117 801
ralph@ljhfp.com.au



LJ Hooker Flinders Park
(08) 8352 1155

Disclaimer: All information contained therein is gathered from relevant third parties sources. We cannot guarantee or give any warranty about the information provided. Interested parties must rely solely on their own enquiries.

the home. Adjacent to the kitchen, the family room provides a relaxing space for gatherings and everyday living, seamlessly extending into the outdoor alfresco area through sliding doors.

The property's reverse cycle ducted air conditioning ensures comfort throughout the seasons, making this home a sanctuary of temperature-controlled bliss. Additionally, the single garage, with extra space for another vehicle, offers practical solutions for storage and parking.

Located in the vibrant community of Northfield, you are just moments away from local parks, schools, and shopping centers, providing an ideal balance of suburban tranquility and urban convenience. Whether it's enjoying a family walk in the nearby parks or a quick commute to the city, 6 Thompson Street offers the perfect setting for a fulfilling lifestyle.

Don't miss the chance to make this beautifully designed house your new home. With its modern amenities, elegant interiors, and prime location, 6 Thompson Street, Northfield represents a rare opportunity in one of Adelaide's emerging neighborhoods.

To register your interest or to make an offer, click the link below:

<https://prop.ps//txB9p49fDHOy>

Disclaimer:

Any prospective purchaser should not rely solely on 3rd party information providers to confirm the details of this property or land and are advised to enquire directly with the agent in order to review the certificate of title and local government details provided with the completed Form 1 vendor statement. All land sizes quoted are an approximation only and at the purchasers discretion to confirm. All information contained herein is gathered from sources we consider to be reliable. However, we cannot guarantee or give any warranty about the information provided. Interested parties must solely rely on their own enquiries.

RLA 215339

More About this Property

Property ID	HQTH67
Property Type	House
Land Area	300 m2
Including	Ensuite Toilets (2)

Gerard Pacillo 0431 596 145

Property Consultant | gerard@ljhfp.com.au

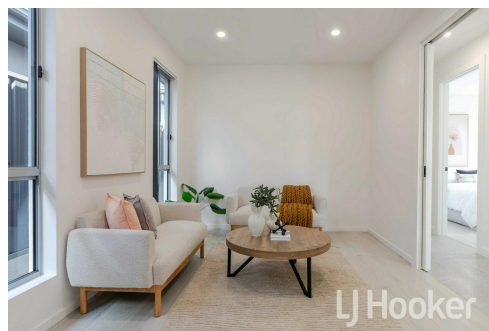
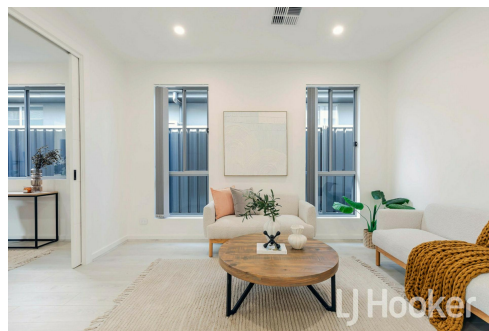
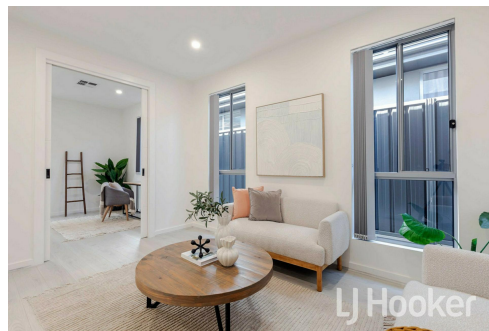
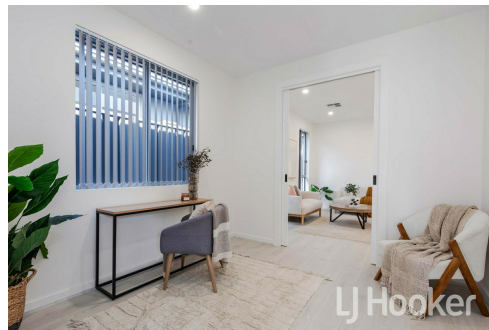
Ralph Pacillo 0433 117 801

Licensee | ralph@ljhfp.com.au

LJ Hooker Flinders Park (08) 8352 1155

Suite 2/166-168 Grange Road, FLINDERS PARK SA 5025

flinderspark.ljhooker.com.au | flinderspark@ljhfp.com.au



**LJ Hooker Flinders Park
(08) 8352 1155**

Disclaimer: All information contained therein is gathered from relevant third parties sources. We cannot guarantee or give any warranty about the information provided. Interested parties must rely solely on their own enquiries.



Area (Estimate only)	
Living	154 m2
Garage	19 m2
Total	173 m2

For illustrative purposes only.
All measurements are approximate