



Northfield, 5A West Avenue

Stylish & Low Maintenance

Nestled in the sought-after community of Northfield, this well-maintained Rossdale-built 2005 home is proudly presented by its one and only owner.

Step inside and be greeted by a warm and inviting family living area, where comfort and connection come together effortlessly. The spacious lounge room offers the perfect place to relax and unwind, while the kitchen and dining area flow seamlessly, creating an open and inclusive space where family and friends can gather. Whether you're enjoying a quiet night in or entertaining guests in winter, this thoughtfully designed layout ensures you're always part of the conversation.

Designed for both comfort and convenience, the property features three spacious bedrooms upstairs, including a master suite with a walk-in robe, private balcony, and a walk-through bathroom with a separate toilet.



For Sale
\$759,000 - \$789,000

View
ljhooker.com.au/2BC9GJU

Contact
Donna Staines
0456 844 103
donnas@ljhsales.com.au



Disclaimer: All information contained therein is gathered from relevant third parties sources. We cannot guarantee or give any warranty about the information provided. Interested parties must rely solely on their own enquiries.

**LJ Hooker Greenwith | Golden Grove
| Mawson Lakes | Modbury
(08) 8289 6660**

Features You'll Love:

- * Reverse cycle heating and cooling (zoned) for year-round comfort
- * Well-appointed kitchen with dishwasher, gas cooking, and filtered water (Filterite)
- * Electric roller shutters to bedrooms two and three for added security and energy efficiency
- * Hot water controllers in both the kitchen and bathroom for convenience
- * Additional second toilet downstairs
- * Crimsafe security screen doors leading to the outdoor entertaining area
- * Electric roller door for secure parking
- * Outdoor TV included

Step outside to an entertainer's dream, where a stunning outdoor space is designed for both relaxation and celebration. Enjoy peaceful mornings or balmy summer nights under the covered entertaining area, while the warm glow of festoon lights beneath the shade sail creates the perfect ambiance for gatherings. A 6x6m powered shed with a side workshop and built-in cupboards provides excellent storage and workspace. Drive-through access from the main driveway ensures seamless entry, while the extra-height carport is designed to accommodate boats, caravans, or large vehicles-making this outdoor haven as practical as it is inviting.

Conveniently located just 10km (approx.) from the Adelaide CBD, this home offers the perfect blend of suburban tranquillity and city convenience. With public transport options at your doorstep, commuting has never been easier. Enjoy a variety of local restaurants, cafés, and fast-food takeaways just moments away, catering to every craving. Whether you're after a quick bite, a sit-down meal, or a night out in the city, everything you need is within easy reach.

Positioned directly across from Northfield Primary School and just a short drive to Cedar College and Roma Mitchell Super School, this home is perfectly suited for families seeking a secure, convenient, and well-connected lifestyle.

Don't miss this fantastic opportunity-enquire today!

All information provided has been obtained from sources we believe to be accurate, however, we cannot guarantee the information is accurate and we accept no liability for any errors or omissions (including but not limited to a property's land size, floor plans and size, building age and condition). Interested parties should make their own enquiries and obtain their own legal and financial advice. Should this property be scheduled for auction, the Vendor's Statement may be inspected at either of our two LJ Hooker Property Specialists Real Estate offices for 3 consecutive business days immediately preceding the auction and at the auction for 30 minutes before it starts.

RLA 208516



Disclaimer: All information contained therein is gathered from relevant third parties sources. We cannot guarantee or give any warranty about the information provided. Interested parties must rely solely on their own enquiries.

**LJ Hooker Greenwith | Golden Grove
| Mawson Lakes | Modbury
(08) 8289 6660**

More About this Property

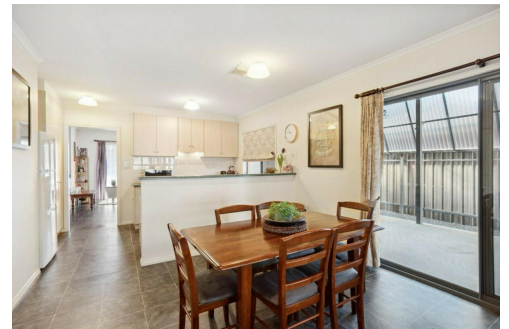
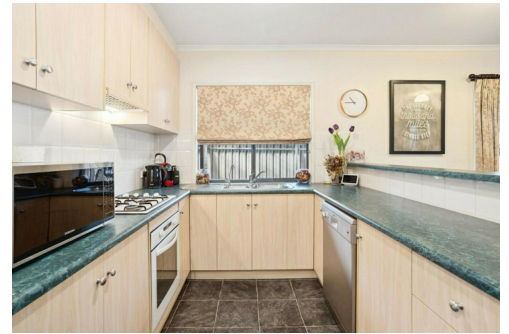
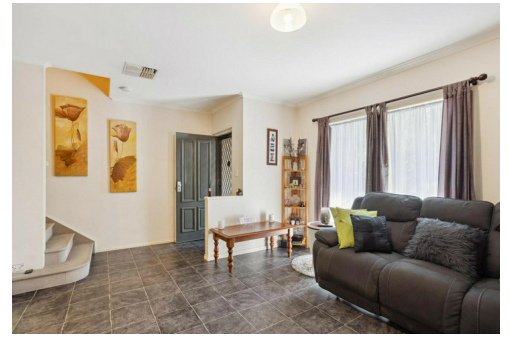
Property ID	2BC9GJU
Property Type	House
House Size	142 m2
Land Area	380 m2
Including	Air Conditioning Toilets (1) Balcony Dishwasher Outdoor Entertaining Workshop Built-in-Robes Secure Parking

Donna Staines 0456 844 103

Sales Specialist | donnas@ljhsales.com.au

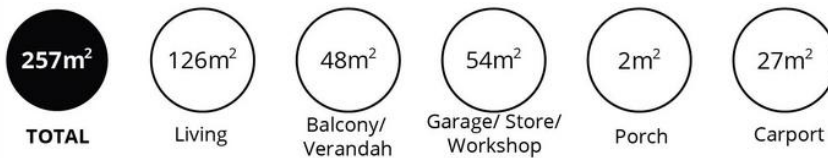
LJ Hooker Greenwith | Golden Grove | Mawson Lakes | Modbury (08) 8289 6660

North East, Shop 2, 1007 North East Road, RIDGEHAVEN SA 5097
greenwithgoldengrove.ljhooker.com.au | info@ljhsupport.com.au



Disclaimer: All information contained therein is gathered from relevant third parties sources.
We cannot guarantee or give any warranty about the information provided. Interested parties must rely solely on their own enquiries.

**LJ Hooker Greenwith | Golden Grove
| Mawson Lakes | Modbury
(08) 8289 6660**



Scale in metres. This drawing is for illustration purposes only. All measurements are approximate and details intended to be relied upon should be independently verified.

Produced by **The Fotobase Group**