



North Ward, 12/177 Mitchell Street

MULTI LEVEL PENTHOUSE LIVING AT IT'S BEST

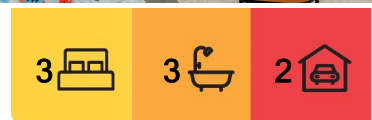
Introducing a one of a kind Penthouse in the heart of North Ward that is sure to exceed all expectations. This stunning penthouse features three spacious bedrooms, each with their own ensuite bathroom for added convenience and luxury, with four balconies offering breathtaking views of the surrounding area, you will never tire of the scenery.

This property boasts two separate living areas plus a sitting room providing ample space and relaxation for entertaining guests. Spread across two levels, this home offers a level of privacy and comfort that is unmatched by traditional apartments and with 286m² of space this is larger than your average house.

- Multi level living
- Three large bedrooms all with robes and ensuites
- Three separate living areas
- Six metre high ceilings



Disclaimer: All information contained therein is gathered from relevant third parties sources. We cannot guarantee or give any warranty about the information provided. Interested parties must rely solely on their own enquiries.



For Sale
\$850,000

View
ljhooker.com.au/3D6HWK

Contact
Suzanne Coverlid
0439 032 210
suzanne.coverlid@ljhooker.com.au

LJ Hooker Townsville
07 44262125

- Open plan kitchen/dining
- Two parking spaces, one garage, one car space

Your new address is in walking distance to the Strand and Gregory Street and everything these precincts have to offer - Cotters Markets on Sundays, wander to your favourite bar, pub or café or enjoy a cold drink and a meal at the multiple coffee shops and restaurants looking out to Magnetic Island - what an array of activities to have available right on your doorstep!

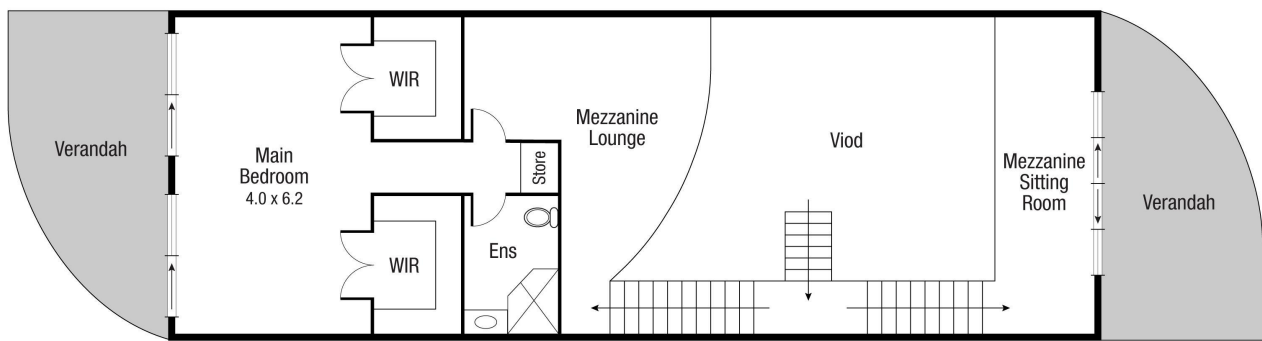
More About this Property

Property ID	3D6HWK
Property Type	Apartment
House Size	286 m²
Land Area	286 m²

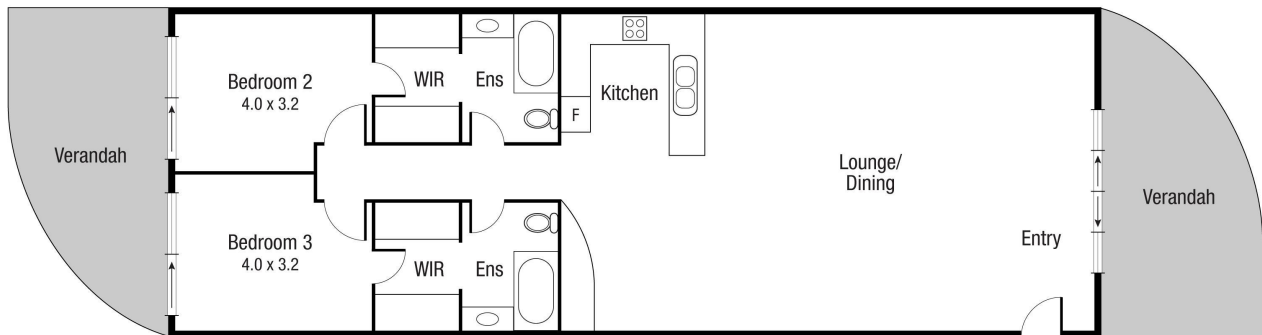
Suzanne Coverlid 0439 032 210
 Sales Consultant | suzanne.coverlid@ljhooker.com.au

LJ Hooker Townsville 07 44262125
 Shop 18/39 Eyre Street, NORTH WARD QLD 4810
townsville.ljhooker.com.au | townsville@ljhooker.com.au





Upper Floor



Lower Floor

Scale in metres. Indicative only. Dimensions are approximate. All information contained herein is gathered from sources we believe to be reliable. However we cannot guarantee its accuracy and interested persons should rely on their own enquiries.

TOTAL AREA : 286.3 sq.m

12/177 Mitchell St