

1 Ilinga Close, North Nowra

Duplex in Sought After North Nowra

Duplex 1

- 3 Bedroom all with built-in robes
- L-shaped living/dining room
- Open plan kitchen/ electric oven
- Single garage/ internal access
- Patio, easy care garden

Duplex 2

- 1 Bedroom with built-in robe
- Living/ dining combined
- Open plan kitchen/ electric oven
- Single garage with internal access
- Light filled bathroom

Under one title

Great tenants

Combined rent of \$830 per week

Easy walk to local shopping centre, medical centre and tavern.

Very tidy investment

Please call Peter on 0402 267 411 to arrange a private inspection

4 🚗 2 🚗 2 🚗

FOR SALE

Contact Agent

VIEW

Sat 13th Jun @ 9:30AM - 10:00AM

AGENTS

Peter Rapley

0402 267 411

prapley.nowra@ljhooker.com.au

AGENCY

LJ Hooker Nowra

(02) 4421 2957

All information contained therein is gathered from relevant third parties sources.
We cannot guarantee or give any warranty about the information provided.
Interested parties must rely solely on their own enquiries.

 LJ Hooker

MORE DETAILS

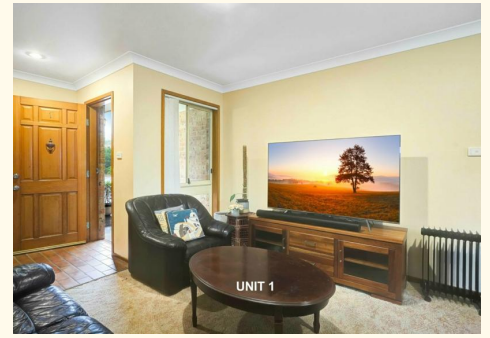
Property ID 6NUHSD
Property Type DuplexSemi-detached
Land Area 788 m2

Peter Rapley 0402 267 411

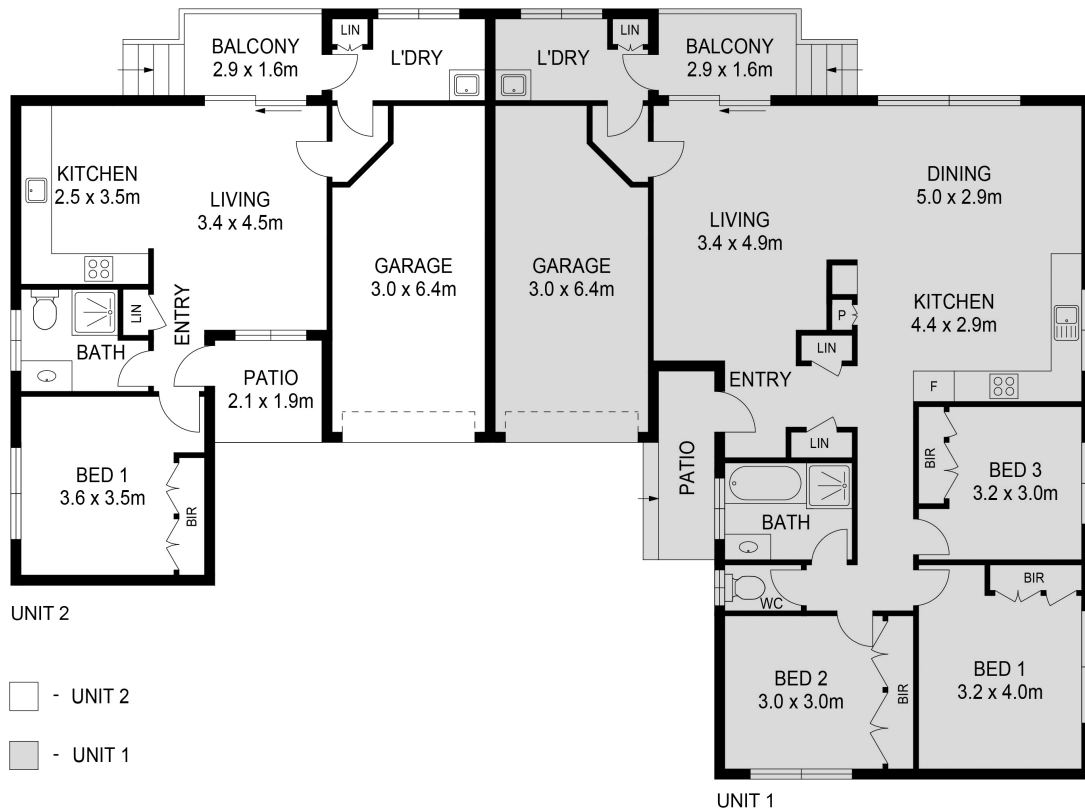
Licenced Real Estate Agent | prapley.nowra@ljhooker.com.au

LJ Hooker Nowra (02) 4421 2957

5/38-44 Berry Street, NOWRA NSW 2541
nowra.ljhooker.com.au | nowra@ljhooker.com.au



All information contained therein is gathered from relevant third parties sources.
We cannot guarantee or give any warranty about the information provided.
Interested parties must rely solely on their own enquiries.



GROSS INTERNAL AREA
 GROSS INTERNAL AREA: 155m², EXCLUDED AREAS:
 GARAGE: 36m², PATIO: 8m², BALCONY: 10m²
 TOTAL: 209m²

MEASUREMENTS ARE DEEMED HIGHLY RELIABLE BUT NOT GUARANTEED.

