

53 Morehead Street, North Lambton

Deceased Estate

The perfect position for your Dream Home

Exceptional block

Exceptional location




Exceptional ocean & city

This near level block is situated at the crest of Morehead Street, providing panoramic 180 degree views over Newcastle, stretching from Stockton to Merewether beaches.

This rare site features an original two-bedroom cottage that can be easily removed, giving you a blank canvas to create your perfect family home.

From the high demand local school zones, to easy access to John Hunter hospital, Newcastle University, Lambton Park and pool, the location is central and so convenient.

You are easily connected via a short drive to the Newcastle CBD, major shopping centers, and local village amenities.

2  1  1 

AUCTION

Thu 16th Jul @ 6:00PM

VIEW

Sat 20th Jun @ 2:15PM - 2:45PM

AGENTS

Paul Campbell
0417 678 593
paul.campbell@ljhooker.com.au

Robert Church
0468 813 659
Robert.church@ljhooker.com.au

AGENCY

LJ Hooker Warners Bay
(02) 4915 3800

All information contained therein is gathered from relevant third parties sources.
We cannot guarantee or give any warranty about the information provided.
Interested parties must rely solely on their own enquiries.



Don't miss out on this rare chance to secure your family's future lifestyle.

Inspection highly recommended.

Must be sold!

The information contained herein has been provided by people we believe to be reliable, however all interested parties must rely on their own enquiries.

MORE DETAILS

Property ID	ZJGHN8
Property Type	House
Land Area	322.5 m2
Including	Air Conditioning
	Toilets (1)
	City Views
	Close to Schools
	Fenced Backyard

Paul Campbell 0417 678 593

Chairman of the Board | paul.campbell@ljhooker.com.au

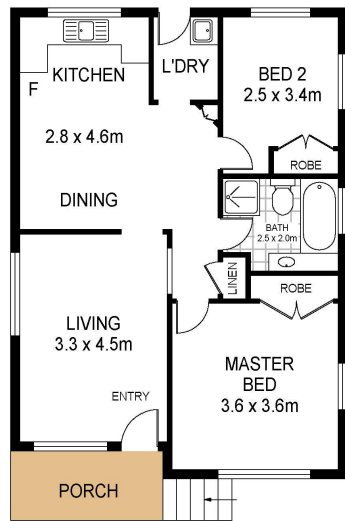
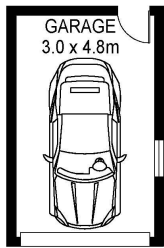
Robert Church 0468 813 659

Sales Executive | Robert.church@ljhooker.com.au

LJ Hooker Warners Bay (02) 4915 3800

Shop 12, 240-260 Hillsborough Rd, WARNERS BAY NSW 2282
warnersbay.ljhooker.com.au | warnersbay@ljhooker.com.au





LJ Hooker

53 Morehead Street
North Lambton



Total Internal Floor Area: 68 sqm

Scale in metres Indicative only. Dimensions are approximate. All information contained herein is gathered from sources we believe to be reliable. However we cannot guarantee its accuracy and interested persons should rely on their own enquiries



All information contained therein is gathered from relevant third parties sources.
We cannot guarantee or give any warranty about the information provided.
Interested parties must rely solely on their own enquiries.

LJ Hooker