



## North East Valley, 6 Lennox Street

### Elevated Living with Unmatched Views!

Perfectly positioned at the top of world-famous Baldwin Street, this contemporary 3-bedroom home offers sweeping vistas and a lifestyle of ease and elevation. Tucked away from the street in a gated community, this property is a private oasis offering peace, privacy, and a sense of escape while still being close to the city. Inside, the open-plan living, dining, and kitchen area is light-filled and welcoming, with the kitchen perfectly positioned so you can enjoy the sweeping outlook while cooking dinner. Step outside to a generous deck, ideal for entertaining or simply soaking up the sun and scenery. Comfort is key here, with double glazing throughout, a wood fire (on wetback) for cosy winter nights, and an HRV system to keep the home dry and healthy. The property is also fully fenced, making it safe and secure for kids and pets. A standout feature is the large workshop garage, offering plenty of space for storage, projects, or weekend hobbies. And as an added bonus, there's a separate studio room-ideal as a home office, creative space, or potential guest retreat. Modern, easy-care, and thoughtfully designed, this is your chance to own a peaceful haven with postcard-worthy views in one of Dunedin's most iconic

3

1

1

**For Sale**  
Set Sale

**View**  
By Appointment

**Contact**  
**Cherish Thom**  
cherish@ljhdunedin.co.nz

**Pam Mulder**  
027 454 3366  
Pam@ljhdunedin.co.nz



**Disclaimer:** All information contained therein is gathered from relevant third parties sources. We cannot guarantee or give any warranty about the information provided. Interested parties must rely solely on their own enquiries.

**LJ Hooker Dunedin**  
**(03) 470 1370**  
Wayne Graham Realty Ltd



locations.

Phone Pam Mulder for set viewing times.

## More About this Property

|   |         |
|---|---------|
| <b>Property ID</b>                            | 3Q5UGDS |
| <b>Property Type</b>                          | House   |
| <b>Land Area</b>                              | 562 m2  |
| <b>Licensed Real Estate Agents (REAA2008)</b> |         |

### **Cherish Thom**

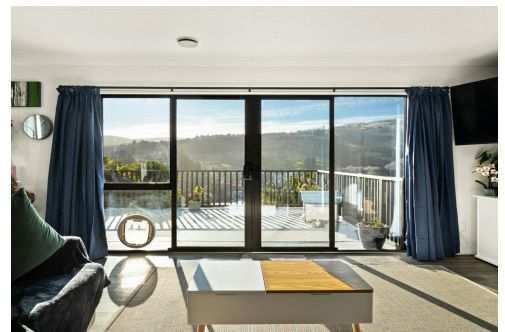
Sales Associate to Jason Hynes & Lawrence Schaumann |  
cherish@ljhdunedin.co.nz

### **Pam Mulder 027 454 3366**

Licensee/Auctioneer | Pam@ljhdunedin.co.nz

### **LJ Hooker Dunedin (03) 470 1370**

Wayne Graham Realty Ltd  
63 Musselburgh Rise, DUNEDIN 9013  
dunedin.ljhooker.co.nz | dunedin@ljhdunedin.co.nz



**Disclaimer:** All information contained therein is gathered from relevant third parties sources.  
We cannot guarantee or give any warranty about the information provided. Interested parties must rely solely on their own enquiries.

**LJ Hooker Dunedin**  
**(03) 470 1370**  
Wayne Graham Realty Ltd