



21 Beulah Road, Norville

Packed with Potential!

Set on a generous 695.5 sq/m block is this tidy, low-maintenance three-bedroom Norville home.

Superbly positioned within a short distance to pristine beaches, the Lake Foreshore and all.

Surrounded by restaurants and cafes in Norville, Norah Head and quick drive to Toukley Village Shopping.




Featuring:

- An air-conditioned main living area.
- Kitchen with ceramic cook top and plenty of storage.
- Adjoining dining area.
- Three bedrooms all with built in robes.
- Bathroom with separate toilet.
- Bonus toilet in the laundry area.

There is a spacious rear deck that has been fully enclosed and offers plenty of space to relax.

The large backyard may lend itself to a granny flat subject to council approval.

Parking is catered for with a single lock up garage, including automatic door and workshop area at rear; plus extra parking space in

3  1  1 

FOR SALE

\$850,000 - \$900,000

AGENTS

Justin Bond

0406 999 007

justin.bond@ljhooker.com.au

Belinda Bond

0400 544 557

belinda.bond@ljhooker.com.au

AGENCY

LJ Hooker Tumby Umbi | Killarney Vale |

Bateau Bay

(02) 4389 1722

All information contained therein is gathered from relevant third parties sources.

We cannot guarantee or give any warranty about the information provided.

Interested parties must rely solely on their own enquiries.

 **LJ Hooker**

the driveway.

Currently leased to a long-term tenant on a month to month basis. You could move in or keep the tenant for immediate return on your investment.

Rent is at present \$575/week with updated rental appraisal available on request.

Finished throughout with ceiling fans and painted in neutral tones. This property would be ideal for the first home buyer or would make for the ideal investment.

Call Justin or Belinda for more information.

Available to view by open for inspection with times as advertised.

Disclaimer: All information contained herein is gathered from sources we consider to be reliable, however we cannot guarantee or give any warranty about the information provided. All images, border/s, property boundaries and floor plans are indicative of the property and for illustrative purposes only. Any development potential stated herein is suggestive only and may be subject to relevant approvals, as such it is not to be relied upon. All distances and measurements are approximate. Interested parties must solely rely on their own enquiries.

MORE DETAILS

Property ID	WS8GJF
Property Type	House
Land Area	695.5 m2

Justin Bond 0406 999 007

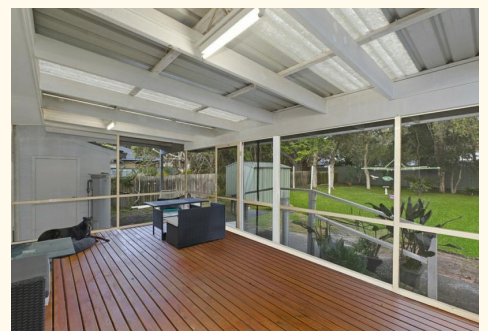
Principal - Licensee | justin.bond@ljhooker.com.au

Belinda Bond 0400 544 557

Principal - Licensee | belinda.bond@ljhooker.com.au

LJ Hooker Tumbi Umbi | Killarney Vale | Bateau Bay (02) 4389 1722

Shop 2, 140 Wyong Road, KILLARNEY VALE NSW 2261
tumbiumbi.ljhooker.com.au | tumbiumbi@ljhooker.com.au





FLOOR PLAN



SITE PLAN



Scale in metres. Indicative only. Dimensions are approximate. All information contained herein is gathered from sources we believe to be reliable. However we cannot guarantee its accuracy and interested persons should rely on their own enquiries

INT : 128m²
EXT : 73m² NOT TO SCALE



21 Beulah Road, Norville