



## Nightcliff, 2/29 Kurrajong Crescent

Contemporary Beachside Living in Nightcliff —Unit 2, 29 Kurrajong Crescent

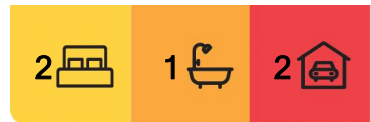
Discover the ultimate in low-maintenance, coastal living with this stylish unit, perfectly positioned in Nightcliff. Only moments from Nightcliff foreshore, local cafes, and the iconic Nightcliff Jetty, this residence offers the ideal lifestyle for both relaxation and recreation.

### Property Highlights:

- 2 Spacious Bedrooms with built-in wardrobes and natural light
- Modern Open-Plan Living Area with seamless flow onto the private balcony, perfect for unwinding or entertaining
- Updated Kitchen featuring quality appliances, ample storage, and a breakfast bar
- Air Conditioning Throughout to keep you comfortable year-round
- Private Balcony with leafy views, ideal for morning coffee or evening drinks



**Disclaimer:** All information contained therein is gathered from relevant third parties sources. We cannot guarantee or give any warranty about the information provided. Interested parties must rely solely on their own enquiries.



**For Sale**  
\$390,000

**View**  
[ljhooker.com.au/5CTYF2X](https://ljhooker.com.au/5CTYF2X)

**Contact**  
**Riley Loy**  
0422 729 288  
[rloy@ljhookerdarwin.com.au](mailto:rloy@ljhookerdarwin.com.au)

**LJ Hooker Darwin**  
**(08) 8924 0900**

Secure Car Park and storage space for added convenience

- Recently renovated throughout

- Shared BBQ area

- 2 Carparks rare to find!

Set within a well-maintained complex, this home is ideal for first-home buyers, investors, or anyone looking for a comfortable and modern lifestyle. With its unbeatable location close to shops, schools, parks, and Nightcliff's scenic coastline, this property offers a unique opportunity to live close to the best of what Darwin has to offer.

Don't miss your chance to secure a piece of sought-after Nightcliff —contact us today to arrange an inspection!

## More About this Property

<b>Property ID</b>	5CTYF2X
<b>Property Type</b>	Unit
<b>House Size</b>	67 m <sup>2</sup>
<b>Land Area</b>	157 m <sup>2</sup>
<b>Including</b>	Air Conditioning Courtyard Built-in-Robes Fully Fenced Liveability

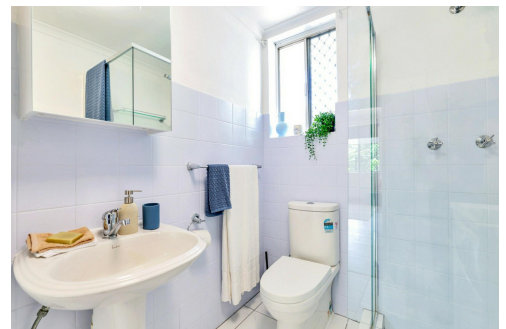
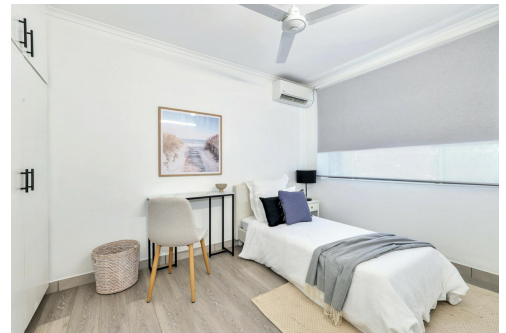
**Riley Loy 0422 729 288**

Sales Representative | [rloy@ljhookerdarwin.com.au](mailto:rloy@ljhookerdarwin.com.au)

**LJ Hooker Darwin (08) 8924 0900**

Shop 1/25 Parap Road, PARAP NT 0820

[darwin.ljhooker.com.au](http://darwin.ljhooker.com.au) | [reception@ljhookerdarwin.com.au](mailto:reception@ljhookerdarwin.com.au)



**Disclaimer:** All information contained therein is gathered from relevant third parties sources. We cannot guarantee or give any warranty about the information provided. Interested parties must rely solely on their own enquiries.

**LJ Hooker Darwin**  
**(08) 8924 0900**