



## Nicholson, 124 Gregory Road

### MODERN FAMILY HOME WITH EXPANSIVE FEATURES ON 28 ACRES

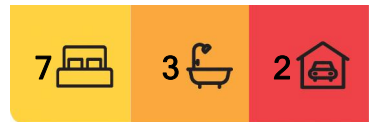
Discover this exceptional home, built in 2020 by Key Homes, offering modern luxury and ample space. The expansive layout features generously proportioned rooms, including two master bedrooms with walk-in robes and contemporary ensuites. Five additional double bedrooms, each with built-in robes, provide comfort and convenience for the whole family. The highlight of the home is a massive central kitchen showcasing elegant black stone benchtops, a butler's pantry, a second pantry, and sleek appliances- a delight for culinary enthusiasts. The dining room seamlessly flows through stacker doors to a large undercover alfresco area, perfect for enjoying the afternoon sun. Two spacious living areas provide ample room for relaxation, complemented by a study nook.

The stylish family bathroom, large powder room, and a big laundry with plenty of storage enhance the functionality of the home. Plus, there's a double garage with extra storage space offering additional practicality.

Comfort is assured with ducted electric heating and cooling, complemented by a wood fire.



**Disclaimer:** All information contained therein is gathered from relevant third parties sources. We cannot guarantee or give any warranty about the information provided. Interested parties must rely solely on their own enquiries.



**For Sale**  
Please Call

**View**  
[ljhooker.com.au/17QNFBF](http://ljhooker.com.au/17QNFBF)

**Contact**  
**Kelly Quirke**  
0427 064 816  
[kquirke@ljhookerbairnsdale.com.au](mailto:kquirke@ljhookerbairnsdale.com.au)

**Carly Hine**  
0418 307 288  
[chine@ljhookerbairnsdale.com.au](mailto:chine@ljhookerbairnsdale.com.au)

**LJ Hooker Bairnsdale**  
**(03) 5152 4172**

The property also features a 13.2kW solar system for energy efficiency, a large dam and a 130,000-liter water tank. There's a 12 x 12m concrete slab in place and all the materials for an American Barn style shed to be constructed. Spanning 28 acres, this property offers plenty of space for livestock or recreational activities, all set against picturesque country views across rolling farmland and less than 20 minutes from Bairnsdale. Don't miss this opportunity to own a blend of modern comfort and serene country living!

## More About this Property

<b>Property ID</b>	17QNFBF
<b>Property Type</b>	AcreageSemi-rural
<b>House Size</b>	480 m2
<b>Land Area</b>	11.44 hectare
<b>Including</b>	Study Air Conditioning Ducted Heating Built-in-Robes Solar Hot Water

### Kelly Quirke 0427 064 816

Sales Consultant | [kquirke@ljhookerbairnsdale.com.au](mailto:kquirke@ljhookerbairnsdale.com.au)

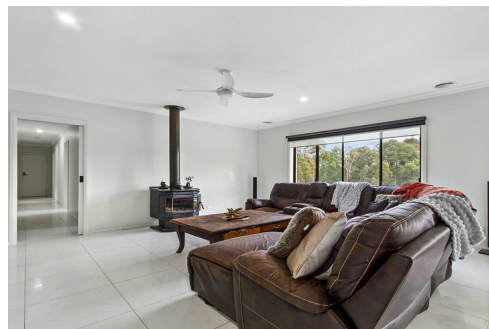
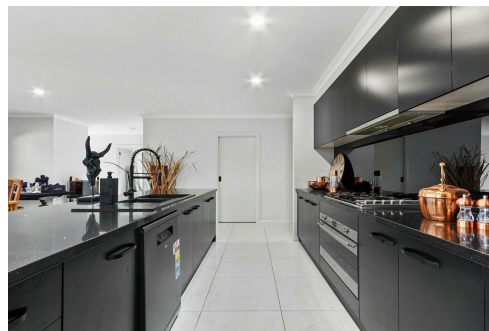
### Carly Hine 0418 307 288

Sales Consultant / Licensed Estate Agent | [chine@ljhookerbairnsdale.com.au](mailto:chine@ljhookerbairnsdale.com.au)

### LJ Hooker Bairnsdale (03) 5152 4172

195 Main Street, BAIRNSDALE VIC 3875

[bairnsdale.ljhooker.com.au](http://bairnsdale.ljhooker.com.au) | [bairnsdale@ljhookerbairnsdale.com.au](mailto:bairnsdale@ljhookerbairnsdale.com.au)



**LJ Hooker Bairnsdale**  
**(03) 5152 4172**

**Disclaimer:** All information contained therein is gathered from relevant third parties sources.

We cannot guarantee or give any warranty about the information provided. Interested parties must rely solely on their own enquiries.



**LJ Hooker**

**124 Gregory Road - Nicholson**



**LJ Hooker**

**LJ Hooker Bairnsdale  
(03) 5152 4172**

**Disclaimer:** All information contained therein is gathered from relevant third parties sources. We cannot guarantee or give any warranty about the information provided. Interested parties must rely solely on their own enquiries.