

Nicholls, 4/16 Weetman Place

Freestanding Single-Level Townhouse in Prime Nicholls Location

Tucked away in a quiet and sought-after pocket of Nicholls, this freestanding 3-bedroom townhouse offers the perfect blend of comfort, convenience, and low-maintenance living. Ideal for downsizers, first-home buyers, or investors, this single-level home is beautifully presented and move-in ready.

Step inside to discover the warmth of bamboo flooring flowing throughout, with spacious open plan living and reverse cycle heating and cooling ensuring year-round comfort. Two bedrooms feature built-in robes, while the cleverly designed two-way bathroom adds functionality and privacy.

Outside, enjoy the benefits of a generous yard space - perfect for relaxing, entertaining, or gardening.

3	1	1
---	---	---

For Sale
Auction

View
ljhooker.com.au/HP0ASF8H

Contact
Kathy Komar
0455 891 351
kkomar@ljhbelconnen.com.au

EER ★★★★★

LJ Hooker Belconnen
(02) 6251 1477



Disclaimer: All information contained therein is gathered from relevant third parties sources. We cannot guarantee or give any warranty about the information provided. Interested parties must rely solely on their own enquiries.

The convenient location places you close to the Nicholls Shopping Centre, public transport, and local schools. A walking path at the rear of the complex leads to two nearby playgrounds - perfect for keeping the kids active and entertained. You're also just minutes from Gungahlin Town Centre, and within easy reach of Gold Creek Country Club and Gold Creek Village.

Features:

- * Freestanding single-level townhouse
- * 3 bedrooms, 2 with built in robes
- * Two-way bathroom
- * Bamboo flooring throughout
- * Reverse cycle heating and cooling
- * Ducted gas heating
- * Spacious yard, ideal for outdoor living
- * Lock-up single garage
- * Quiet location
- * Walking path to two nearby playgrounds
- * Close to Nicholls Shopping Centre, schools & public transport
- * Minutes to Gungahlin Town Centre and Gold Creek attractions

- * Living Size: 94sqm
- * Garage Size: 21sqm
- * Rates: \$2,600 p.a.
- * Strata: \$3,700 p.a.
- * Land Tax: \$4,120 p.a. (investors only)

Disclaimer:

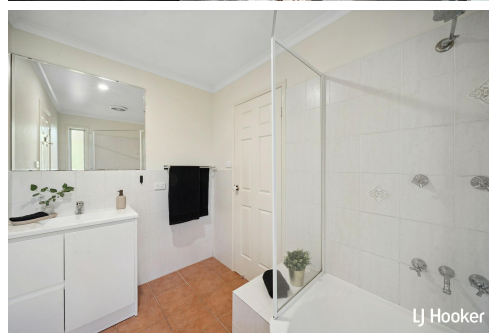
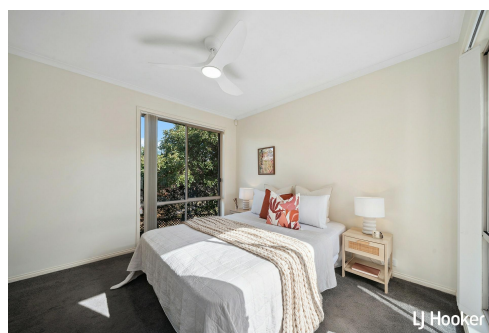
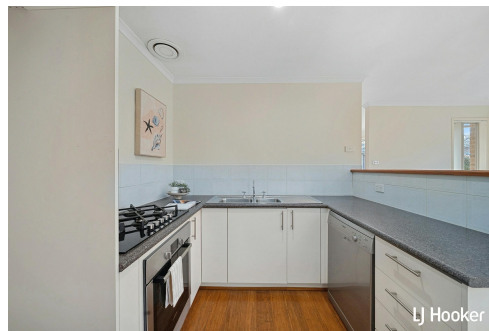
All information contained herein is gathered from external sources we consider to be reliable. However, we cannot guarantee or give any warranty about the information provided. Interested parties must solely rely on their own enquiries and satisfy themselves in all respects.

More About this Property

Property ID	HP0ASF8H
Property Type	Townhouse
House Size	94 m2
EER	3.5

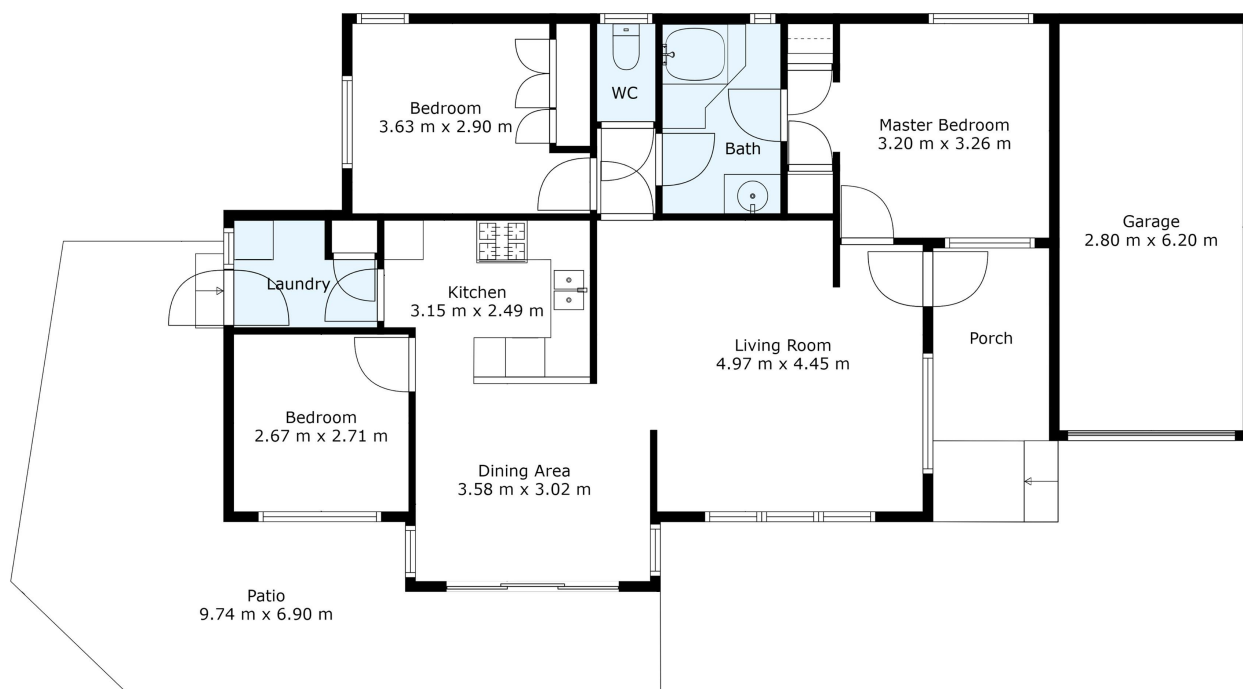
Kathy Komar 0455 891 351
Sales Agent | kkomar@ljhbelconnen.com.au

LJ Hooker Belconnen (02) 6251 1477
Shop 9, 21 Benjamin Way, BELCONNEN ACT 2617
belconnen.ljhooker.com.au | belconnen@ljhbelconnen.com.au



LJ Hooker Belconnen
(02) 6251 1477

Disclaimer: All information contained therein is gathered from relevant third parties sources. We cannot guarantee or give any warranty about the information provided. Interested parties must rely solely on their own enquiries.



4/16 Weetman Pl, Nicholls



Disclaimer: Plans are indicative only and should be checked by the prospective purchaser. Plans shown are for presentation purposes and are not part of any legal document. All measurements and figures are approximate. The information herein is gathered from sources we believe to be reliable.