

Newtown, 67 Jimbour Drive

Impeccably well-maintained low set brick on a quiet 600m2 block.

Ideally located in a quiet family friendly suburb just minutes away from numerous amenities, 67 Jimbour Drive offers a fantastic buying opportunity for the entire marketplace.

Featuring 3 large built-in bedrooms, a spacious family bathroom and a sizeable open plan kitchen, & dining area, this much-loved property is oozing with potential and presents an unmissable opportunity to all.

The generous 600m2, pet friendly block inherits a secure lock up car garage with internal access and an additional carport providing 2 car accommodation.

Currently serving as a wonderful investment property, with a long-term tenant in place, 67 Jimbour Drive introduces an unmissable investment opportunity.



Disclaimer: All information contained therein is gathered from relevant third parties sources. We cannot guarantee or give any warranty about the information provided. Interested parties must rely solely on their own enquiries.



For Sale
\$585,000

View
ljhooker.com.au/1YRAF4W

Contact
Ben Barrowclift
0401 369 201
bbarrowclift@ljht.com.au

LJ Hooker Toowoomba
(07) 4688 2222

Highlighted features include:

- *Low set brick
- *3 Bedrooms
- *Open plan Kitch & Dining
- *Additional rumpus
- *Wood fireplace
- *2 car accommodation
- *600m2 fully fenced block
- *Undercover patio area
- *Garden Shed

More About this Property

Property ID	1YRAF4W
Property Type	House
Land Area	600 m ²

Ben Barrowclift 0401 369 201

Residential Sales Executive | bbarrowclift@ljht.com.au

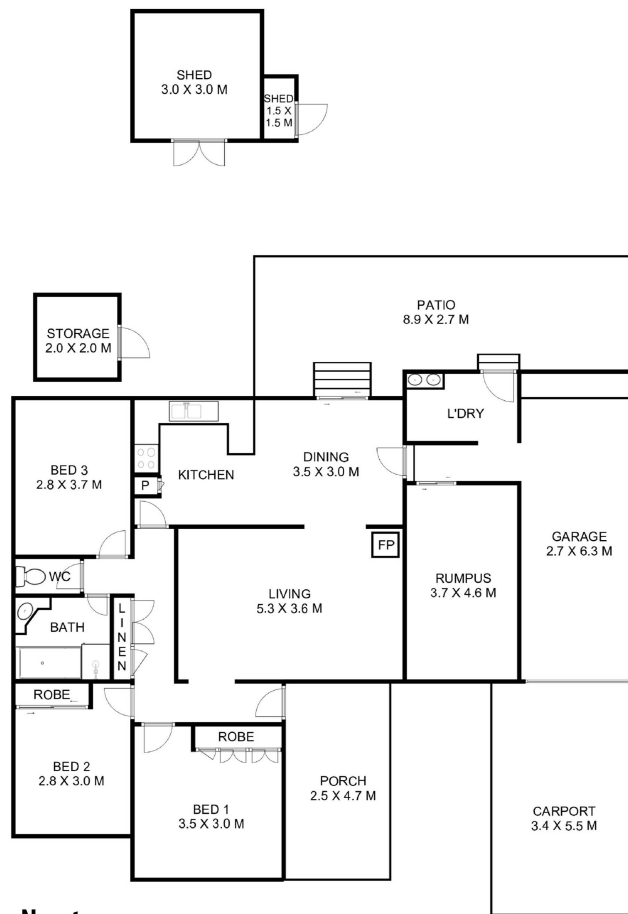
LJ Hooker Toowoomba (07) 4688 2222

Level 1, 677-683 Ruthven Street, TOOWOOMBA QLD 4350
toowoomba.ljhooker.com.au | toowoomba@ljht.com.au



Disclaimer: All information contained therein is gathered from relevant third parties sources.
We cannot guarantee or give any warranty about the information provided. Interested parties must rely solely on their own enquiries.

LJ Hooker Toowoomba
(07) 4688 2222



LJ Hooker 67 Jimbour Drive, Newtown

This plan is for representational purposes only. All dimensions displayed are approximate and shouldn't be solely relied upon.
Do not edit, reproduce, copy, modify, crop or in any way exploit copyright to Statik Illusions. More info : statikillusions.com/usage-rights/

Internal **140m²** External **62m²** Total **202m²** 