



Newtown, 134A Holberton Street

1 property still available!

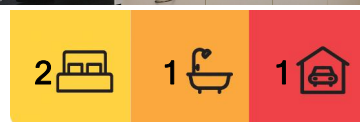
134a Holberton Street (496m2)

Character filled and impeccably well maintained, 134a Holberton Street features 2 bedrooms, 1 bathroom and an open plan kitchen and living area.

With an impressive, pet friendly backyard, with side access down to the shed, this fantastic property is ideal for the entire marketplace.

This property offers a prime opportunity for savvy buyers looking to capitalize on its extreme growth potential.

Perfect for those looking to renovate, land bank, develop or to purchase a savvy investment, 134a Holberton Street is positioned in a superb inner-city location directly looking over the historic Newtown Park.



For Sale
\$500,200

View
ljhooker.com.au/1YRCF4W

Contact
Ben Barrowclift
0401 369 201
bbarrowclift@ljht.com.au



Disclaimer: All information contained therein is gathered from relevant third parties sources. We cannot guarantee or give any warranty about the information provided. Interested parties must rely solely on their own enquiries.

LJ Hooker Toowoomba
(07) 4688 2222

More About this Property

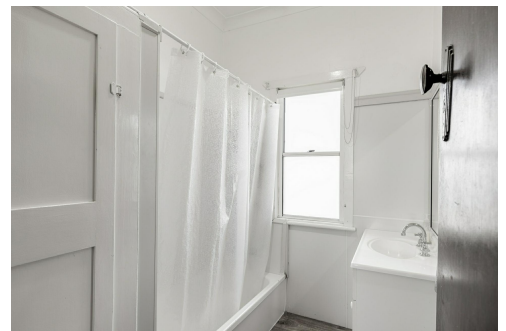
Property ID	1YRCF4W
Property Type	House
Land Area	496 m2

Ben Barrowclift 0401 369 201

Residential Sales Executive | bbarrowclift@ljht.com.au

LJ Hooker Toowoomba (07) 4688 2222

Level 1, 677-683 Ruthven Street, TOOWOOMBA QLD 4350
toowoomba.ljhooker.com.au | toowoomba@ljht.com.au



Disclaimer: All information contained therein is gathered from relevant third parties sources.
We cannot guarantee or give any warranty about the information provided. Interested parties must rely solely on their own enquiries.

LJ Hooker Toowoomba
(07) 4688 2222



LJ Hooker 134+134a Holberton Street, Newtown

This plan is for representational purposes only. All dimensions displayed are approximate and shouldn't be solely relied upon.
Do not edit, reproduce, copy, modify, crop or in any way exploit copyright to Statik Illusions. More info : statikillusions.com/usage-rights/

Internal **107m²** External **0m²** Total **107m²** 