

Newton, 16A Woodley Avenue

Sold by George De Vizio & Julian Rullo of LJ Hooker Adelaide Metro

Sold by George De Vizio & Julian Rullo of LJ Hooker Adelaide Metro

Step into a world of luxury, class and sophistication with this exceptional family home, meticulously crafted by Dechellis Homes. Situated on 471sqm (approx.), this property is an entertainer's dream, blending elegance with modern conveniences to suit every lifestyle.

The heart of the home features an open-plan kitchen, living and dining area, enhanced by a cosy gas fireplace. The entertainer's kitchen is a showstopper, complete with a large island bench, stone benchtops, dishwasher, gas cooktop and a generous butler's pantry, all ready for hosting family and friends.

Soaring 3-metre ceilings amplify the space and natural light, while sliding bi-fold doors extend the indoors to a sophisticated outdoor entertaining area. This alfresco space is fully



Disclaimer: All information contained therein is gathered from relevant third parties sources. We cannot guarantee or give any warranty about the information provided. Interested parties must rely solely on their own enquiries.

SOLD



For Sale

Best Offer By \$1,290,000 - \$1,350,000

View

ljhooker.com.au/WNEFDG

Contact

George De Vizio

0412 392 158

gdevizio@ljhadalaidemetro.com.au

Julian Rullo

0407846417

julian.rullo@ljhadalaidemetro.com.au

LJ Hooker Glynde
(08) 8336 3899

equipped with a built-in kitchen, BBQ, sink and dedicated fridge space-perfect for outdoor dining and year-round gatherings.

With four spacious bedrooms, there's room for everyone. The master suite boasts a walk-in robe and a luxurious ensuite, while the additional bedrooms include mirrored built-in robes and are serviced by a stylish main bathroom, fully tiled and complete with a bathtub.

What we love;

- Single storey on 471sqm (approx.)
- Built by Dechellis Homes in 2023
- Open plan kitchen/ living and dining
- Gas fireplace
- Outdoor kitchen
- Plantation shutters throughout
- Second living/theatre room could be used as 5th bedroom
- Zoned r/c air-conditioning
- 3-metre ceilings
- Solar system

Ideally located within walking distance to Newton Central Shopping Centre, nearby playgrounds, and quality schools, this property provides a superb lifestyle opportunity.

Purchasing this property as an investment? Talk with Kirsty Clark from our PM team and see why our Property Management department is #1 amongst all the LJ Hooker offices Worldwide.

** All information provided has been obtained from sources we believe to be accurate, however, we cannot guarantee the information is accurate and we accept no liability for any errors or omissions (including but not limited to a property's land size, floor plans and size, building age and condition). Interested parties should make their own enquiries and obtain their own legal advice.

RLA 61345 RLA 282965 RLA 231015

More About this Property

Property ID	WNEFDG
Property Type	House
Land Area	471 m ²
Including	Ensuite Toilets (2)

George De Vizio 0412 392 158

Sales Manager | gdevizio@ljhadelaidemetro.com.au

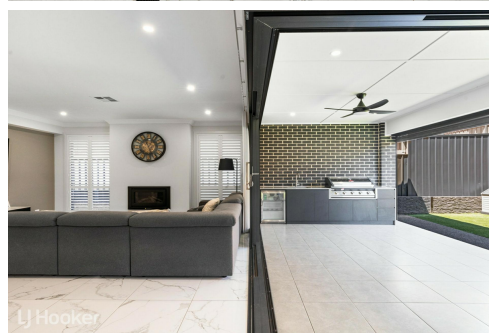
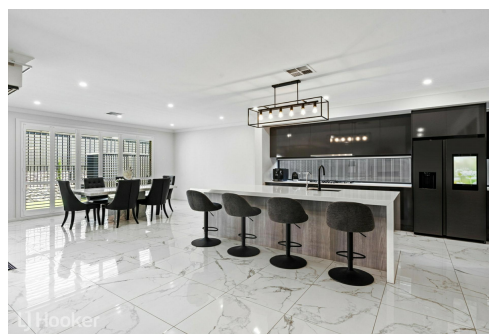
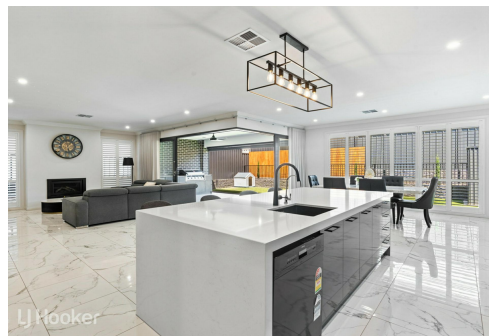
Julian Rullo 0407846417

Sales Consultant | julian.rullo@ljhadelaidemetro.com.au

LJ Hooker Glynde (08) 8336 3899

2a Portrush Road, PAYNEHAM SA 5070

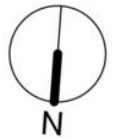
glynde.ljhooker.com.au | stpeters@ljhadelaidemetro.com.au



Disclaimer: All information contained therein is gathered from relevant third parties sources.

We cannot guarantee or give any warranty about the information provided. Interested parties must rely solely on their own enquiries.

**LJ Hooker Glynde
(08) 8336 3899**



16 Woodley Avenue, Newton SA 5074

Disclaimer: The information & figures obtained within this document has been compiled from information provided by vendor & sources that we believe are reliable. No warranty is given to their accuracy & all figures are subject to change without notice.