
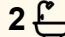
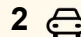




3  2  2 

FOR SALE
\$759,000

VIEW
By Appointment

AGENTS
John Meng
0430 808 998
jmeng.cityresmelbourne@ljhooker.com.au

John Meng
0430 808 998
jmeng.cityresmelbourne@ljhooker.com.au

AGENCY
LJ Hooker City Residential
(03) 9600 2166

All information contained therein is gathered from relevant third parties sources.
We cannot guarantee or give any warranty about the information provided.
Interested parties must rely solely on their own enquiries.



MORE DETAILS

Property ID PH5HC2
Property Type Townhouse
Including Air Conditioning
Close to Schools
Close to Shops
Close to Transport

John Meng 0430 808 998

Principal, Managing Director, OIEC |
jmeng.cityresmelbourne@ljhooker.com.au

John Meng 0430 808 998

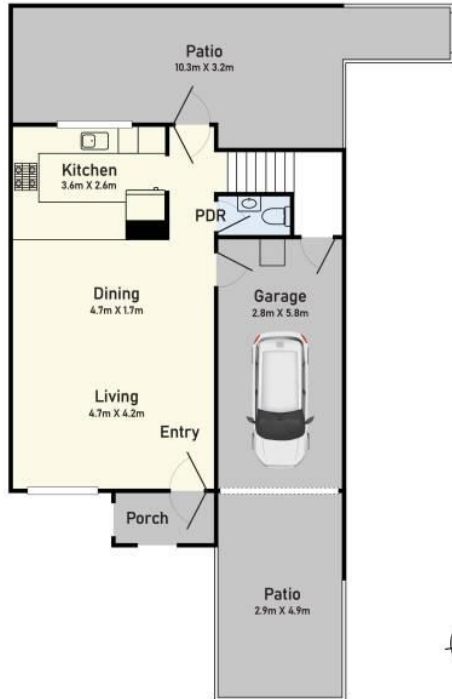
Principal, Managing Director, OIEC |
jmeng.cityresmelbourne@ljhooker.com.au

LJ Hooker City Residential (03) 9600 2166

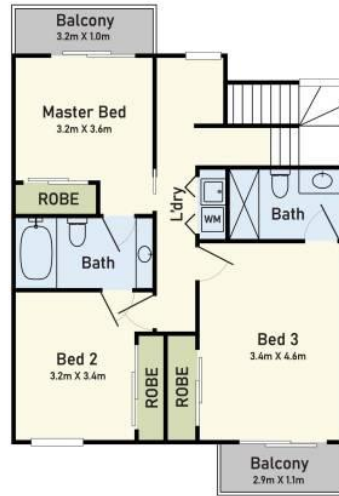
Upper Ground Floor, 439-445 Lonsdale St, MELBOURNE VIC 3000
cityresmelbourne.ljhooker.com.au |
cityresmelbourne@ljhooker.com.au



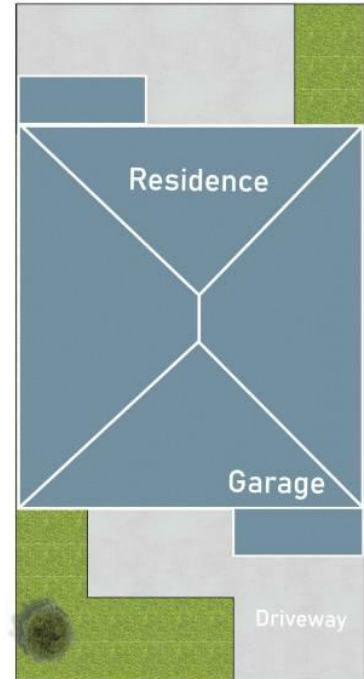
Ground Floor



First Floor



Site Plan



7/124-136 Mason Street, Newport

* Dimensions are approximate and for illustrative purposes only

All information contained therein is gathered from relevant third parties sources. We cannot guarantee or give any warranty about the information provided. Interested parties must rely solely on their own enquiries.