
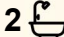
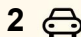




7/124-136 Mason Street, Newport

3  2  2 

## Modern Living Redefined — Effortless Style in a Prime Newport Setting

Experience the ease of contemporary living in this beautifully configured residence, where clever design maximizes space and natural light. The heart of the home is the expansive ground-floor zone, where the living, dining, and kitchen areas combine to create a stunning entertainer's paradise. The genius of this layout lies in its connection to the outdoors; sliding glass doors open onto two sun-drenched patios, dissolving the boundary between indoors and out and creating a brilliant space for hosting friends.

The accommodation is intelligently zoned for privacy, with all bedrooms located on the upper level. The master suite offers a chic retreat with its own ensuite and walk-in robe. Two additional bedrooms, both with access to a private balcony, are generously sized and bathed in light, offering versatile spaces for rest, work, or play.

Offering the ultimate in lock-and-leave convenience, this property is situated in the heart of the thriving Newport community. With the station, trendy cafes, and the bay foreshore all within easy reach, every convenience is on your doorstep. Combining sleek interiors with

**FOR SALE**  
\$760,000 - \$780,000

**VIEW**  
Thu 14th May @ 5:30PM - 6:00PM

**AGENTS**  
John Meng  
0430 808 998  
jmeng.cityresmelbourne@ljhooker.com.au

John Meng  
0430 808 998  
jmeng.cityresmelbourne@ljhooker.com.au

**AGENCY**  
LJ Hooker City Residential  
(03) 9600 2166

All information contained therein is gathered from relevant third parties sources. We cannot guarantee or give any warranty about the information provided. Interested parties must rely solely on their own enquiries.



a low-maintenance lifestyle and secure parking, this is the perfect opportunity to secure a foothold in one of the bayside's most desirable locations.

## MORE DETAILS

Property ID	PH5HC2
Property Type	Townhouse
Including	Air Conditioning
	Close to Schools
	Close to Shops
	Close to Transport

### John Meng 0430 808 998

Principal, Managing Director, OIEC |  
jmeng.cityresmelbourne@ljhooker.com.au

### John Meng 0430 808 998

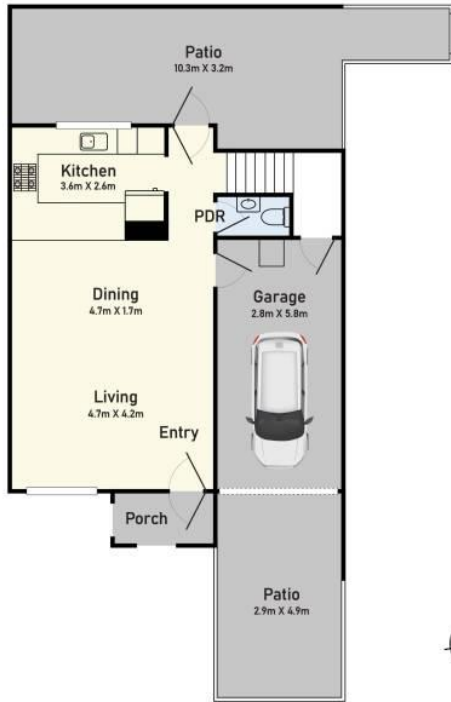
Principal, Managing Director, OIEC |  
jmeng.cityresmelbourne@ljhooker.com.au

### LJ Hooker City Residential (03) 9600 2166

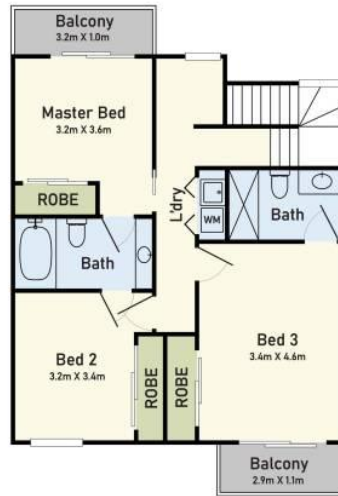
Upper Ground Floor, 439-445 Lonsdale St, MELBOURNE VIC 3000  
cityresmelbourne.ljhooker.com.au |  
cityresmelbourne@ljhooker.com.au



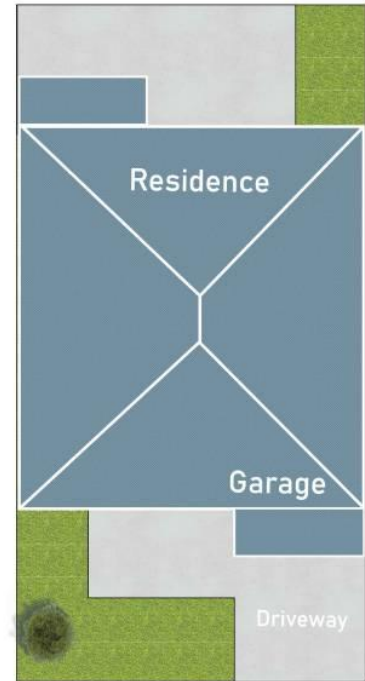
### Ground Floor



### First Floor



### Site Plan



## 7/124-136 Mason Street, Newport

\* Dimensions are approximate and for illustrative purposes only