

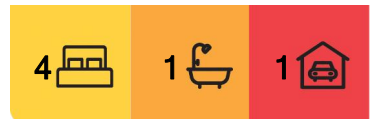
Newport, 7 Beacon Crescent

Character Filled Residence In The Heart Of Newport!

Step inside the cherished abode at 7 Beacon Crescent, nestled in the serene and highly sought-after locale of Newport, QLD. This inviting four-bedroom house presents an exceptional opportunity for all prospective buyers dreaming of establishing their new family home in a prime position.

Spanning a generous land size of 619 square metres, this property offers ample space both inside and out. The residence features four well-appointed bedrooms ensuring comfort and privacy for all members of the household. A single, elegantly designed bathroom caters to the daily routines, promising both functionality and relaxation.

One of the key highlights of this charming house is its close proximity to the sparkling water, allowing you to bask in the peaceful ambiance and seaside bliss Newport is celebrated for. Moreover, local shops are just a stone's throw away, offering unparalleled convenience for your shopping and dining experiences.



For Sale
Under Offer

View
l.jhooker.com.au/200GGWZ

Contact
Danny Mailer
0439 710 862
danny@l.jhookerredcliffe.com.au



LJ Hooker Redcliffe
(07) 3897 5000

Disclaimer: All information contained therein is gathered from relevant third parties sources. We cannot guarantee or give any warranty about the information provided. Interested parties must rely solely on their own enquiries.

The property boasts parking facilities for up to three vehicles, ensuring you and your guests will never be wanting for space. As you step outside, envision the potential for creating your own oasis in the expansive backyard, perfect for children's play, entertaining, or simply soaking up the Queensland sun.

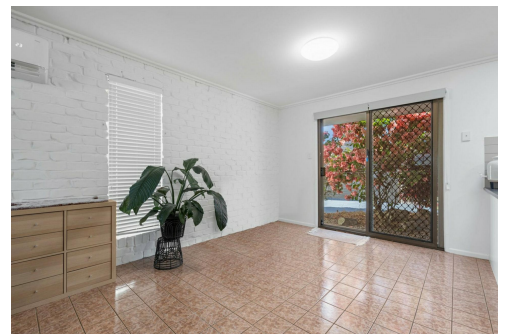
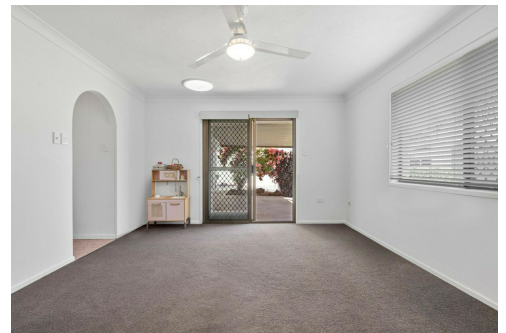
Ready to embrace its new occupants, 7 Beacon Crescent awaits those who appreciate a blend of tranquillity and practicality. This is more than just a house; it is a place where memories will be created, and dreams will flourish. Seize the opportunity to make this your forever home in the picturesque setting of Newport.

More About this Property

Property ID	200GGWZ
Property Type	House
Land Area	619 m2

Danny Mailer 0439 710 862
Principal | danny@ljhookerredcliffe.com.au

LJ Hooker Redcliffe (07) 3897 5000
45 Redcliffe Parade, REDCLIFFE QLD 4020
redcliffe.ljhooker.com.au | reception@ljhookerredcliffe.com.au



LJ Hooker Redcliffe
(07) 3897 5000

Disclaimer: All information contained therein is gathered from relevant third parties sources. We cannot guarantee or give any warranty about the information provided. Interested parties must rely solely on their own enquiries.



7 Beacon Crescent NEWPORT

4 | 1 | 1 | 200m²



All dimensions are approximate; they are subject to errors and inaccuracies and no liability will be accepted. Plans are shown for marketing purposes only.



LJ Hooker Redcliffe
(07) 3897 5000

Disclaimer: All information contained therein is gathered from relevant third parties sources. We cannot guarantee or give any warranty about the information provided. Interested parties must rely solely on their own enquiries.