



3 Vista Court, Newport

## Tranquil Family Living in a Sought-After Cul-de-Sac

Nestled in one of the area's most peaceful, family-orientated cul-de-sac locations, this beautifully presented home offers an exceptional blend of lifestyle, comfort, and convenience. With close proximity to the water and nearby parks, you can enjoy morning walks, weekend picnics, and the refreshing coastal atmosphere right at your doorstep. This is a location that truly enhances day-to-day living, giving you easy access to nature while still being close to all essential amenities.

From the moment you arrive, the serenity of the street sets the tone. The neighbourhood is quiet, welcoming, and perfectly suited for families seeking a safe and friendly environment. The property itself features an easy-care garden, offering the ideal balance between greenery and low-maintenance living-perfect for those who want to enjoy outdoor space without the added upkeep.

Inside the home, you'll immediately notice the impressive sense of spaciousness. Designed with functionality and flexibility in mind, the layout boasts multiple living spaces that cater to modern family life. Whether you need a separate area for the kids, a cosy place to relax with a book, or an open space for entertaining, this home provides options for everyone. Abundant natural light and thoughtful design

4 2 2

**FOR SALE**  
Under Offer

### AGENTS

Suzie Oxley  
0421 110 939  
suzie@ljhookerredcliffe.com.au

Danny Mailer  
0439 710 862  
danny@ljhookerredcliffe.com.au

### AGENCY

LJ Hooker Redcliffe  
(07) 3897 5000

All information contained therein is gathered from relevant third parties sources.  
We cannot guarantee or give any warranty about the information provided.  
Interested parties must rely solely on their own enquiries.

LJ Hooker

enhance the open, airy feel throughout, creating an inviting atmosphere in every room.

Families will appreciate the convenience of being close to reputable schools and the local swimming pool, making school runs and afternoon activities effortless. Everything you need is just minutes away, ensuring a practical lifestyle without sacrificing peace and privacy.

This home delivers the perfect combination of comfort, convenience, and location-ready to welcome its next family to enjoy the lifestyle it offers.

## MORE DETAILS

|               |         |
|---------------|---------|
| Property ID   | 20BYGWZ |
| Property Type | House   |
| House Size    | 330 m2  |
| Land Area     | 750 m2  |

### Suzie Oxley 0421 110 939

Sales and Marketing Consultant | [Suzie@ljhookerredcliffe.com.au](mailto:Suzie@ljhookerredcliffe.com.au)

### Danny Mailer 0439 710 862

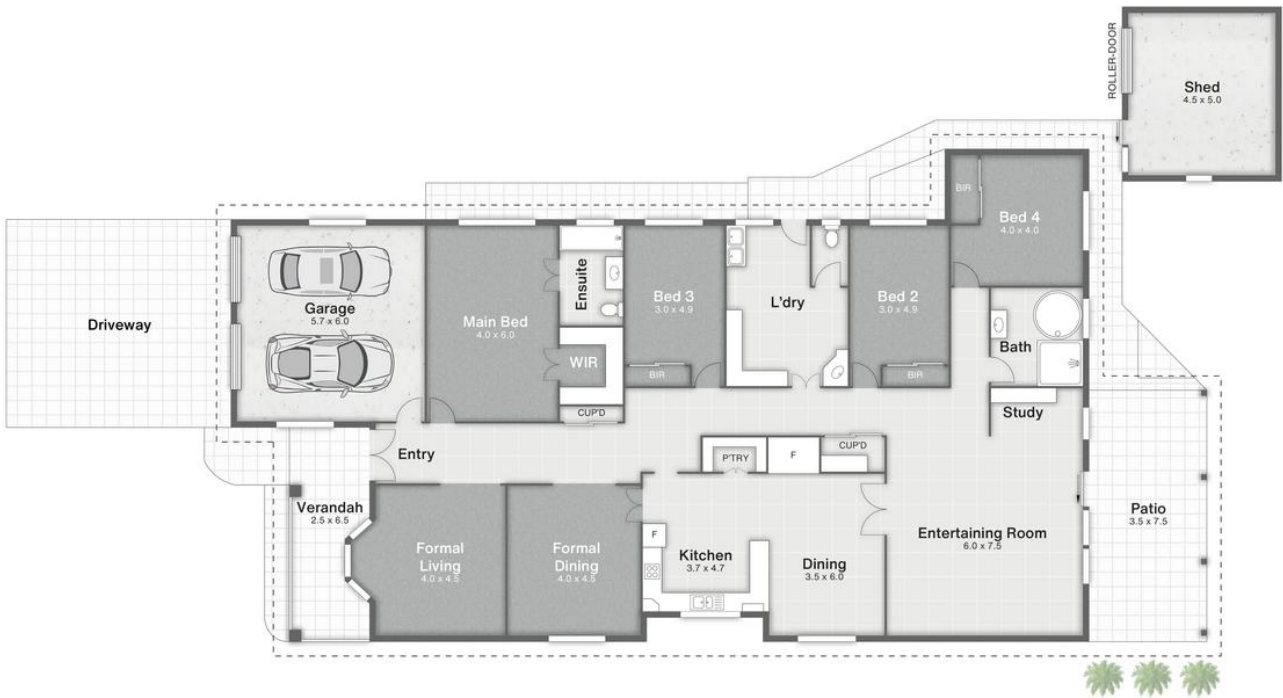
Principal | [danny@ljhookerredcliffe.com.au](mailto:danny@ljhookerredcliffe.com.au)

### LJ Hooker Redcliffe (07) 3897 5000

45 Redcliffe Parade, REDCLIFFE QLD 4020

[redcliffe.ljhooker.com.au](mailto:redcliffe.ljhooker.com.au) | [reception@ljhookerredcliffe.com.au](mailto:reception@ljhookerredcliffe.com.au)





3 Vista Court **NEWPORT**

 4 |
  2 |
  2 |
  330m<sup>2</sup>

**LJ Hooker**

All dimensions are approximate; they are subject to errors and inaccuracies and no liability will be accepted. Plans are shown for marketing purposes only.

All information contained therein is gathered from relevant third parties sources. We cannot guarantee or give any warranty about the information provided. Interested parties must rely solely on their own enquiries.

**LJ Hooker**