

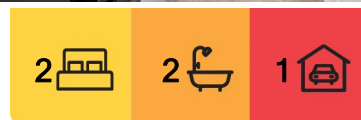


## Newport, 2/32 Seaview Avenue

### Sunlit Apartment with Ocean Glimpses in the Heart of Newport

Set within the boutique 'Timber Tops' double-brick block, this elevated ground-floor, two-bedroom apartment showcases earthy tones, creating a natural connection to its surroundings. Sunlight filters through multiple balconies, effortlessly blending indoor and outdoor living. The prized north-facing aspect ensures year-round sunshine, while its prime Newport village location offers unbeatable convenience, just moments from the beach. With filtered leafy views and a glimpse of the ocean, it presents an exceptional opportunity for relaxed coastal living or a savvy investment.

- \*Prized north-facing aspect ensuring year-round natural light
- \*Free-flowing layout unfolding to a series of sun-drenched balconies
- \*Luxurious plush new carpeting and freshly painted interiors
- \*Kitchen with timber style floors, dishwasher, and gas appliances
- \*Two light filled and airy bedrooms both with built-in robes



**For Sale**  
SOLD! \$1,460,000

**View**  
[ljhooker.com.au/1AF4G5W](http://ljhooker.com.au/1AF4G5W)

**Contact**  
**Cherie Sevenoaks**  
0414 400 689  
[csevenoaks@ljhnewport.com.au](mailto:csevenoaks@ljhnewport.com.au)  
**Cherie Sevenoaks**  
0414 400 689  
[csevenoaks@ljhnewport.com.au](mailto:csevenoaks@ljhnewport.com.au)



**Disclaimer:** All information contained therein is gathered from relevant third parties sources. We cannot guarantee or give any warranty about the information provided. Interested parties must rely solely on their own enquiries.

**LJ Hooker Newport**  
(02) 9979 1111

- \*Spacious master with ensuite and balcony to a tranquil grassed area
- \*Tidy original bathrooms featuring a well-maintained separate bath
- \*Single secure car space with visitor parking and maintained grounds
- \*Moments to village shops, cafes, schools, surf beaches, and buses

Superbly positioned just moments from Newport's vibrant village, offering a delightful array of boutique shops, seaside cafés, and renowned restaurants. This prime location is also close to schools, scenic golf courses, pristine surf beaches, and provides easy access to express city buses, ensuring a convenient and connected lifestyle.

Strata Levy's \$1,689.19 per quarter.

Disclaimer:

All information contained herewith, including but not limited to the general property description, price and the address, is provided to LJ Hooker Newport by third parties. We have obtained this information from sources we believe to be reliable; however, we cannot guarantee its accuracy. The information contained herewith should not be relied upon and you should make your own enquiries and seek advice in respect of this property or any property on this website.

## More About this Property

Property ID	1AF4G5W
Property Type	Unit
Land Area	127 m²

**Cherie Sevenoaks 0414 400 689**  
 Senior Sales Executive, LREA | csevenoaks@ljhnewport.com.au  
**Cherie Sevenoaks 0414 400 689**  
 Senior Sales Executive, LREA | csevenoaks@ljhnewport.com.au

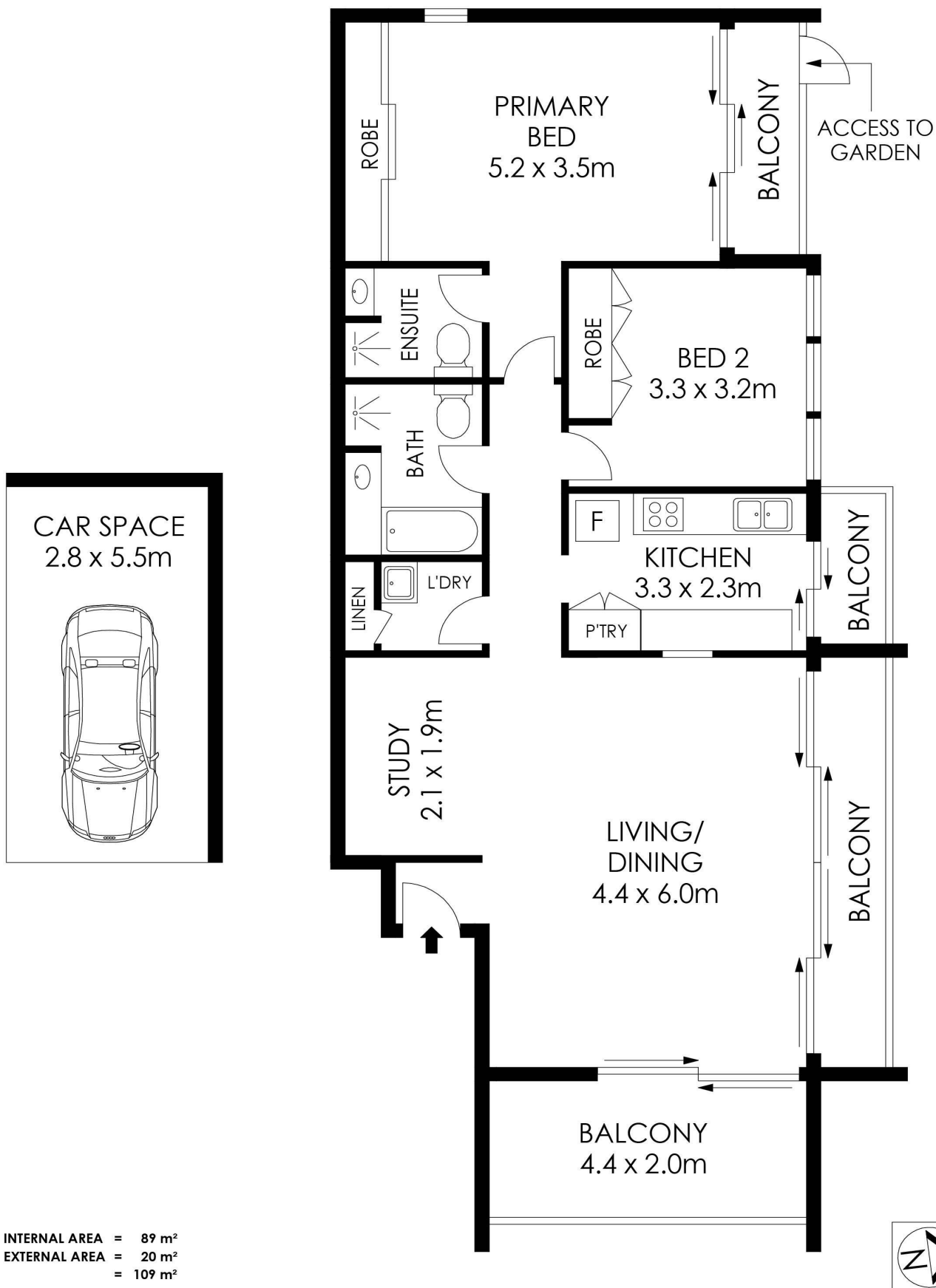
**LJ Hooker Newport (02) 9979 1111**  
 303 Barrenjoey Road, NEWPORT NSW 2106  
 newport.ljhooker.com.au | newport@ljhnewport.com.au



**Disclaimer:** All information contained therein is gathered from relevant third parties sources. We cannot guarantee or give any warranty about the information provided. Interested parties must rely solely on their own enquiries.

**LJ Hooker Newport**  
**(02) 9979 1111**





APPROX. INTERNAL AREA = 89 m<sup>2</sup>  
 APPROX. EXTERNAL AREA = 20 m<sup>2</sup>  
 TOTAL = 109 m<sup>2</sup>

PLANS SHOWN ONLY INDICATIVE OF LAYOUT. DIMENSIONS ARE APPROXIMATE.

**2/32 Seaview Avenue, Newport**

**LJ Hooker**

**LJ Hooker**

**LJ Hooker Newport**  
 (02) 9979 1111

**Disclaimer:** All information contained therein is gathered from relevant third parties sources.  
 We cannot guarantee or give any warranty about the information provided. Interested parties must rely solely on their own enquiries.