



7 Lovering Place, Newport


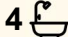
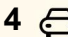
## Coastal Bliss with Unrivalled Ocean Views of Newport Reef

Commanding exceptional, sweeping views of the ocean's horizon and Newport Reef's iconic Crosswaves, this elevated four-bedroom home enjoys a prized cul-de-sac setting. Start your day with a morning coffee on the wraparound deck, watching the sunrise and whales glide by, or unwind in the sun-drenched Mediterranean-style courtyard, embraced by the sea breeze.

Superbly positioned a short stroll to Newport Rockpool or Bungan Beach, with village shops, seaside cafes, restaurants, local farmers markets, wellness hubs, schools, and express city buses moments away.

### Features Include:

- East-facing four-bedroom family home with expansive ocean views
- Ideally set on a quiet cul-de-sac overlooking Newport Crosswaves
- An array of glass sliding doors open to reveal breathtaking views
- Natural coastal style finishes with teak floors and white shutters
- Light and airy free-flowing living areas with pitched high ceilings
- Kitchen with gas appliances, breakfast bar, and oversized oven
- Master with walk-in robe, ensuite, and private balcony with views
- Dedicated laundry with ample storage space and external access

4  4  4 

### AUCTION

Tue 21st Apr @ 6:00PM

### VIEW

By Appointment

### AGENTS

Thomas Mackay  
0429 236 879  
tom.mackay@ljhavalon.com.au

### AGENCY

LJ Hooker Avalon Beach  
(02) 9973 2999

All information contained therein is gathered from relevant third parties sources.  
We cannot guarantee or give any warranty about the information provided.  
Interested parties must rely solely on their own enquiries.

 **LJ Hooker**

- Downstairs rumpus room or second living space with ocean views
- Ducted air-conditioning, ample internal and under house storage
- Sun-drenched Mediterranean style alfresco courtyard at the rear
- Multiple alfresco spaces with potential for pool or a spa (STCA)
- Lush level lawn and gardens surrounded by fragrant frangipanis
- Native gardens with established outdoor water drainage system
- Large workshop, work bench, and shelving, or artist studio, home gym
- Double carport and two additional off-street parking spaces

## MORE DETAILS

Property ID                    WYTF58  
 Property Type                House  
 Land Area                      853 m2

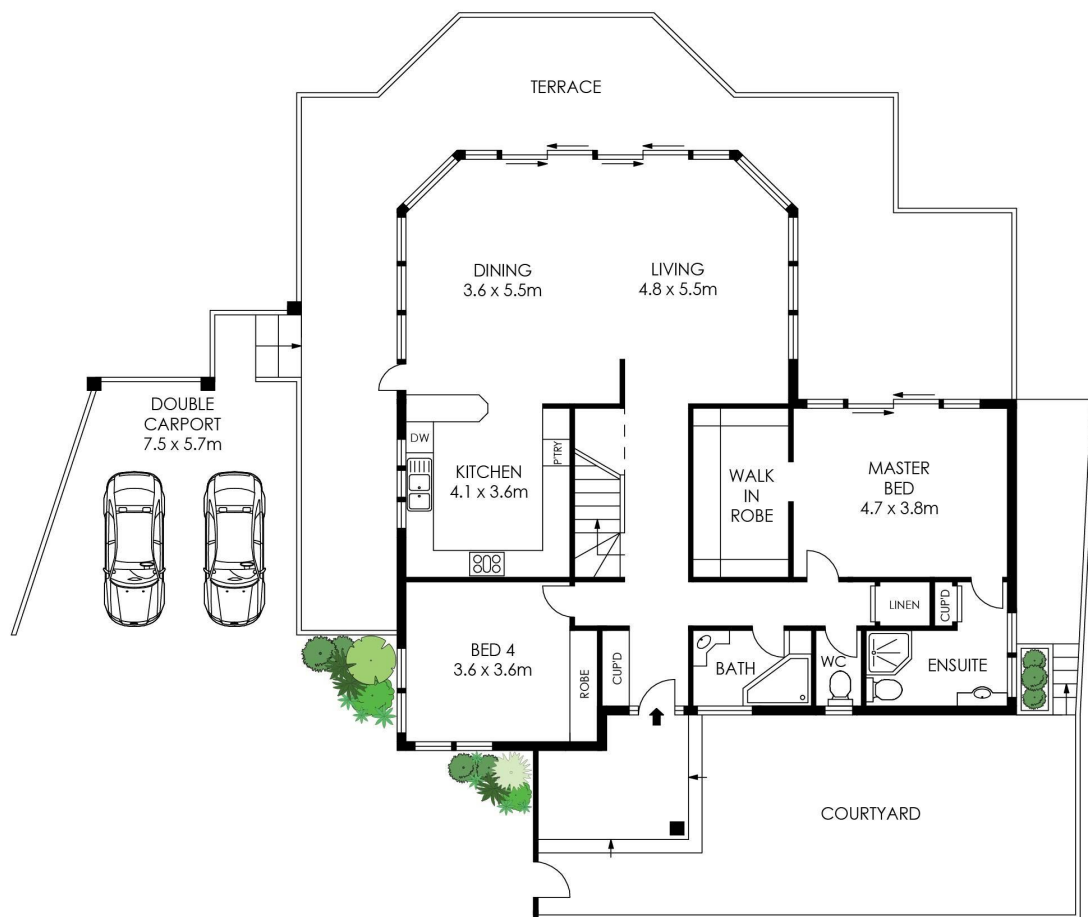
**Thomas Mackay 0429 236 879**

Director | Licensee in Charge | [tom.mackay@ljhavalon.com.au](mailto:tom.mackay@ljhavalon.com.au)

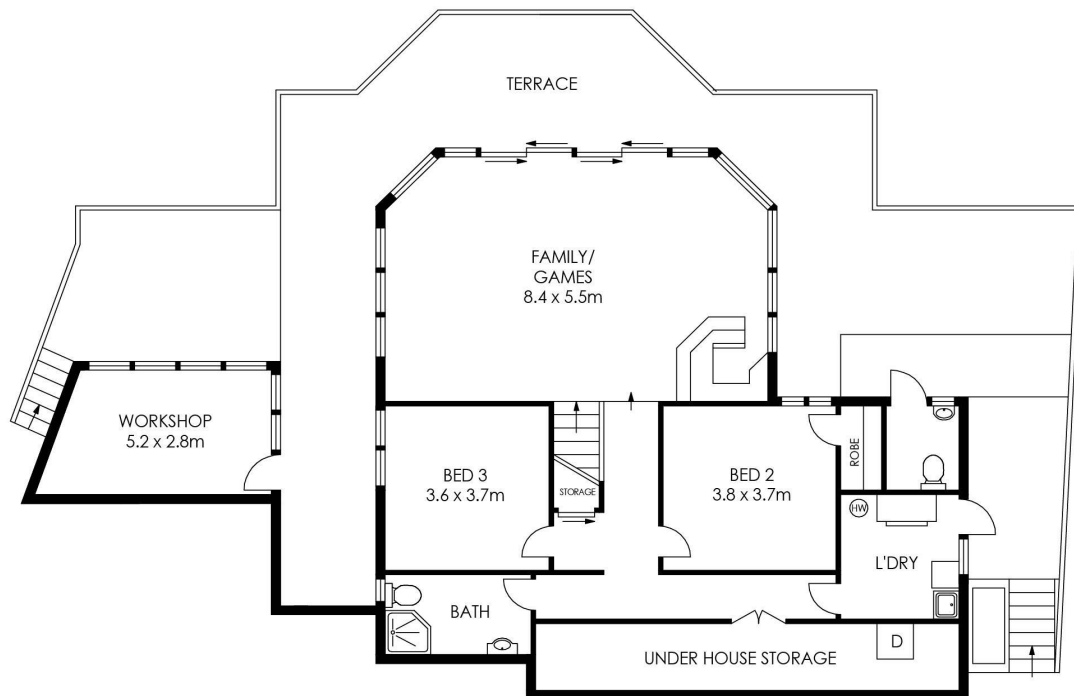
**LJ Hooker Avalon Beach (02) 9973 2999**

64 Old Barrenjoey Road, AVALON BEACH NSW 2107  
[avalonbeach.ljhooker.com.au](http://avalonbeach.ljhooker.com.au) | [avalonbeach@ljhooker.com.au](mailto:avalonbeach@ljhooker.com.au)





ENTRY LEVEL



LOWER LEVEL

TOTAL LAND SIZE = 857 m<sup>2</sup>

PLANS SHOWN ONLY INDICATIVE OF LAYOUT. DIMENSIONS ARE APPROXIMATE.

## 7 Lovering Place, Newport



All information contained therein is gathered from relevant third parties sources. We cannot guarantee or give any warranty about the information provided. Interested parties must rely solely on their own enquiries.

