


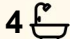
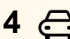
7 Lovering Place, Newport

Sweeping Ocean Views over Newport Reef, Perfect Coastal Escape For "Downsizers" or a Family Home

Tucked away at the end of a whisper quiet cul-de-sac, this four-bedroom coastal retreat captures breathtaking, uninterrupted views across the ocean horizon and the iconic Crosswaves of Newport Reef. Private, sun filled and beautifully connected to its surrounds, the home offers an effortless lifestyle equally suited to downsizers seeking ease and serenity, or families dreaming of a secluded seaside escape.

Enjoy easy, level access from parking straight into the home, making day-to-day living wonderfully convenient. From there, the house opens to a series of light filled spaces that flow seamlessly outdoors. Start your mornings with coffee on the wraparound deck as the sun rises over the reef and whales pass by, or retreat to the sheltered Mediterranean-style courtyard at the rear a tranquil, wind protected haven framed by lush gardens and sea breezes.

Inside, coastal textures and natural finishes set a relaxed yet refined

4  4  4 

FOR SALE

Guide: \$5.8m

VIEW

By Appointment

AGENTS

Jake McDonall
0402 740 085
jmcdonall@ljhnewport.com.au

AGENCY

LJ Hooker Newport
(02) 9979 1111

All information contained therein is gathered from relevant third parties sources. We cannot guarantee or give any warranty about the information provided. Interested parties must rely solely on their own enquiries.

 **LJ Hooker**

tone. Teak floors, white shutters and expansive glass doors frame the ocean outlook from multiple rooms, while soaring pitched ceilings enhance the sense of space and light. The flexible floorplan provides generous living zones, including a lower level rumpus or second living area ideal for visiting family, teenagers or guests. Perfectly positioned just moments from Newport Rockpool and Bungan Beach, and a short stroll to village shops, cafes, restaurants, schools, wellness hubs and express city buses, this is coastal living without compromise peaceful and private, yet effortlessly connected.

Features Include:

- Ocean facing four-bedroom home with wide, uninterrupted views
- Quiet cul-de-sac setting overlooking Newport Reef and Crosswaves
- Easy level access from parking, ideal for downsizers or effortless daily living
- Multiple glass sliders opening to decks and alfresco areas with stunning outlooks
- Light-filled open living areas with pitched high ceilings and coastal finishes
- Teak flooring, white shutters and a natural coastal palette throughout
- Well-appointed kitchen with gas appliances, oversized oven and breakfast bar
- Master suite with walk-in robe, ensuite and private balcony with ocean views
- Lower-level rumpus or second living zone with flexibility for families or guests
- Dedicated laundry with external access and excellent storage
- Drenched Mediterranean-style rear courtyard, private and sheltered
- Multiple alfresco zones with scope for a pool or spa (STCA)
- Level lawn and landscaped gardens with fragrant frangipanis
- Native gardens with established drainage system
- Large workshop / studio space ideal for a gym, artist studio or hobbies
- Double carport plus two additional off-street parking spaces
- Ducted air-conditioning, extensive internal and under house storage

We use BeSafe Inspections for Strata Reports. You can purchase the report via the link below:

<https://property.besafe.com.au/reports/7636-building-and-pest-inspection>

Disclaimer:

All information contained herewith, including but not limited to the general property description, price and the address, is provided to LJ Hooker Newport by third parties. We have obtained this information from sources we believe to be reliable; however, we cannot guarantee its accuracy. The information contained herewith should not be relied upon and you should make your own enquiries, and seek advice in respect of this property or any property on this website.

MORE DETAILS

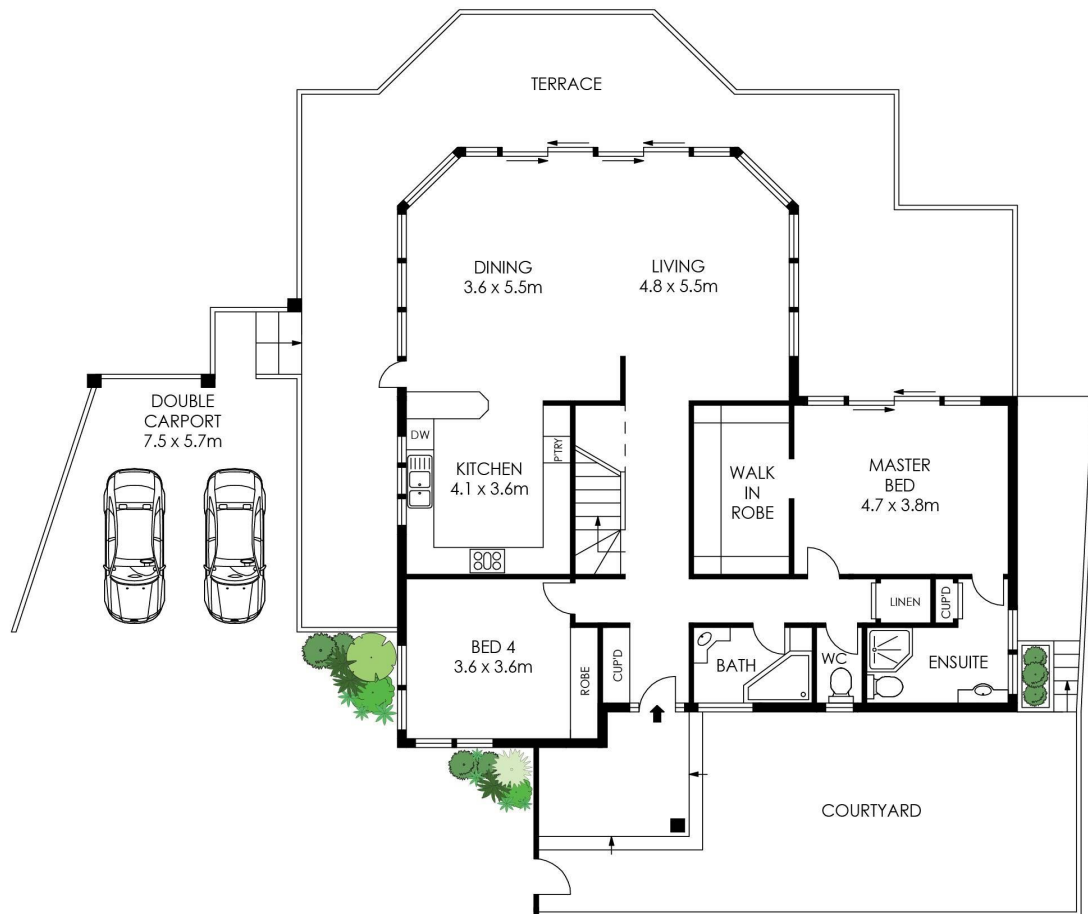
Property ID 1ATQG5W
Property Type House
Land Area 857 m2
Including Air Conditioning
Courttyard
Deck
Built-in-Robes
Close to Schools
Close to Shops
Ocean Views

Jake McDonall 0402 740 085
Sales Executive | jmcdonall@ljhnewport.com.au

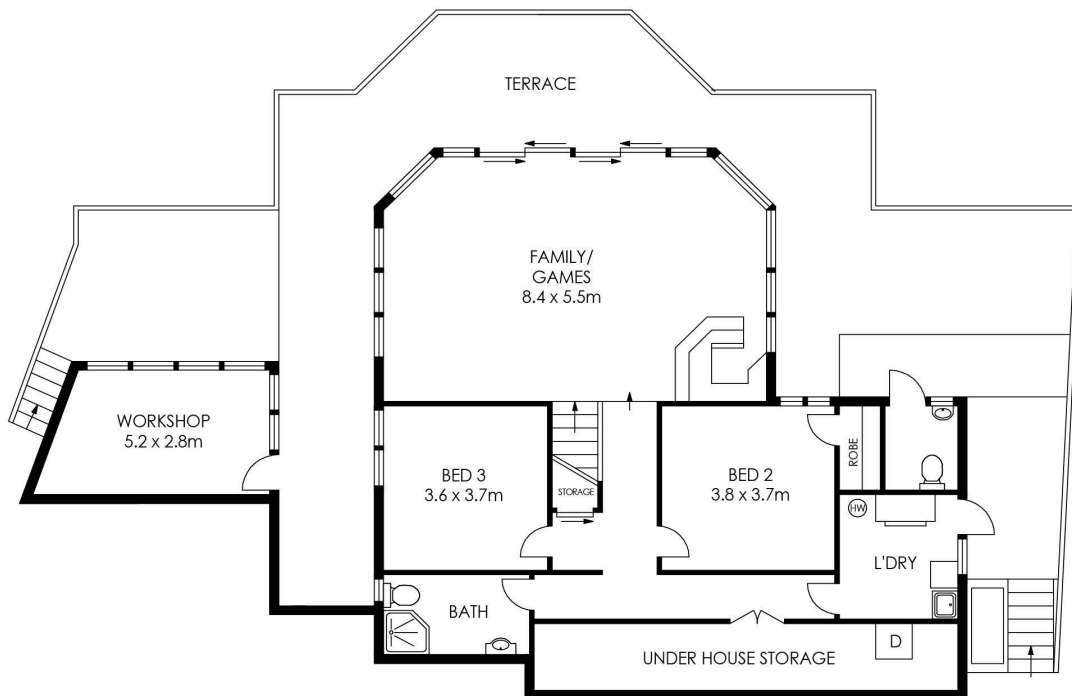
LJ Hooker Newport (02) 9979 1111
303 Barrenjoey Road, NEWPORT NSW 2106
newport.ljhooker.com.au | newport@ljhnewport.com.au



All information contained therein is gathered from relevant third parties sources.
We cannot guarantee or give any warranty about the information provided.
Interested parties must rely solely on their own enquiries.



ENTRY LEVEL



LOWER LEVEL

TOTAL LAND SIZE = 857 m²

PLANS SHOWN ONLY INDICATIVE OF LAYOUT. DIMENSIONS ARE APPROXIMATE.

7 Lovering Place, Newport



All information contained therein is gathered from relevant third parties sources. We cannot guarantee or give any warranty about the information provided. Interested parties must rely solely on their own enquiries.

