



Newport, 67 Crescent Road

Meticulous Contemporary Master-Built Home

Cocooned in luxury and bathed in sunshine, this master built home rests on a level 777sqm with pitch-perfect proportions, streamlined interiors and a landscaped resort style garden. Spread over three levels with leafy greenery all around, the flawlessly appointed design has been custom crafted to be not only stylish but functional for effortless family living.

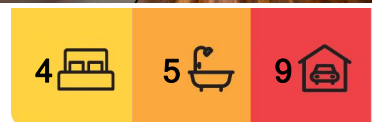
Extensive use of glass achieves remarkable luminosity and offers effortless connection to the outdoors to a private child-friendly level lawn, a party sized pool and a choice of spaces, which cater for any occasion throughout the seasons. Its is superbly located within a short stroll to Yachtsmans Paradise Reserve and public wharf, plus minutes to Newport Public School, cafes, shops and the beach.

Features:

*Extraordinary master-built home, multiple living areas



Disclaimer: All information contained therein is gathered from relevant third parties sources. We cannot guarantee or give any warranty about the information provided. Interested parties must rely solely on their own enquiries.



For Sale
SOLD!

View
ljhooker.com.au/1AC7G5W

Contact
Gordon Spring
0418 210 219
gspring@ljhnewport.com.au
Jake McDonall
0402 740 085
jmcdonall@ljhnewport.com.au

LJ Hooker Newport
(02) 9979 1111

- *Soaring ceilings, free-flowing interiors, bespoke detailing
- *Clever and functional design, large scale home with privacy
- *Immaculate composition with meticulous custom joinery
- *Bespoke island kitchen anchored by marble and spotted gum benchtops
- *Bi-fold window servery to a cafe style bench and alfresco deck
- *Sweeping open plan living/dining domain with gas fireplace
- *Three large bedrooms with ensuites, personalised joinery and storage
- *High-end stone crafted bathroom with heated floors and towel rails
- *Home office, lower-level rumpus/living with a concealed bar
- *Western spotted gum floorboards, sandstone tones, pops of colour
- *Gas fireplace, air-conditioning, integrated sound system, alarm
- *Private north facing level yard, firepit space, 9m saltwater pool
- *Reverse cycle air conditioning, ducted vacuum, laundry chute
- *Rare off-street parking for up to 7 cars; perfect for social gatherings
- *Auto double lock up garage with internal access, workbench, plant room
- *Benefit from provisions in place for an internal lift with service to each level

Disclaimer:

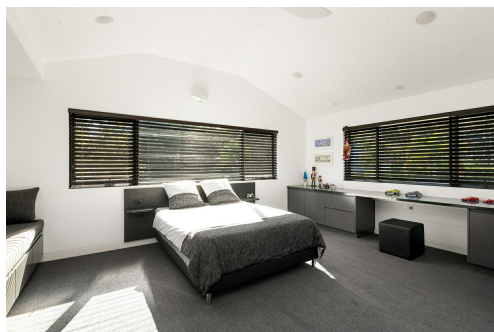
All information contained herewith, including but not limited to the general property description, price and the address, is provided to LJ Hooker Newport by third parties. We have obtained this information from sources we believe to be reliable; however, we cannot guarantee its accuracy. The information contained herewith should not be relied upon and you should make your own enquiries and seek advice in respect of this property or any property on this website.

More About this Property

Property ID	1AC7G5W
Property Type	House
Land Area	777 m2

Gordon Spring 0418 210 219
Principal | gspring@ljhnewport.com.au
Jake McDonall 0402 740 085
Sales Executive | jmcdonall@ljhnewport.com.au

LJ Hooker Newport (02) 9979 1111
303 Barrenjoey Road, NEWPORT NSW 2106
newport.ljhooker.com.au | newport@ljhnewport.com.au



Disclaimer: All information contained therein is gathered from relevant third parties sources. We cannot guarantee or give any warranty about the information provided. Interested parties must rely solely on their own enquiries.

LJ Hooker Newport
(02) 9979 1111

