



Newport, 66 Crescent Road

Resort Style Luxury In Yachtsman's Paradise

Peacefully and privately nestled behind an intimate contemporary facade fronting Yachtsmans Paradise, this exquisite residence opens to reveal a breathtaking property of light, space and resort style luxury. A select palette of materials and high-end finishes create a home that is not only beautiful but functional, with a choice of living spaces for families to work, play and retreat.

Designed to embrace the newly transformed tropical resort-style oasis with fully equipped outdoor entertaining spaces, lush gardens and a sparkling pool and spa its striking centrepiece. It is located in a blue-ribbon cul-de-sac a short stroll to Yachtsmans Paradise Reserve and public wharf with access to Pittwater, plus minutes to schools, cafes, shops and the beach.

Features Include:

- Architect design and master built, benchmark in turnkey family living



Disclaimer: All information contained therein is gathered from relevant third parties sources. We cannot guarantee or give any warranty about the information provided. Interested parties must rely solely on their own enquiries.



Auction
Tue 28th May @ 6:00PM

View
Sat 18th May @ 12:00PM - 12:30PM

Contact
Gordon Spring
0418 210 219
gspring@ljhnewport.com.au

Jake McDonall
0402 740 085
jmcdonall@ljhnewport.com.au

LJ Hooker Newport
(02) 9979 1111

- Gourmet stone crafted kitchen ideally placed to oversee the garden
- Living room with stone wrapped fireplace, separate family lounge/media room
- Sliding doors spill out to an all-season alfresco deck with reclaimed timber beams
- Large bedrooms with built-ins, master suite with leafy balcony
- Designer bathrooms, functional laundry with cabinetry, ample storage options
- Fully equipped poolside cabana with gas fireplace, Vintec wine fridge, barbeque & TV
- Reverse cycle air conditioning, blackbutt timber floors, sound system
- In-ground pool and spa, outdoor shower, lush level lawn
- Auto lock up double garage with storage plus additional off-street parking

Disclaimer:

All information contained herewith, including but not limited to the general property description, price and the address, is provided to LJ Hooker Newport by third parties. We have obtained this information from sources we believe to be reliable; however, we cannot guarantee its accuracy. The information contained herewith should not be relied upon and you should make your own enquiries and seek advice in respect of this property or any property on this website.

More About this Property

Property ID	1AB8G5W
Property Type	House
Land Area	776 m ²

Gordon Spring 0418 210 219

Principal/Licensee In Charge | gspring@ljhnewport.com.au

Jake McDonall 0402 740 085

Sales Executive | jmcdonall@ljhnewport.com.au

LJ Hooker Newport (02) 9979 1111

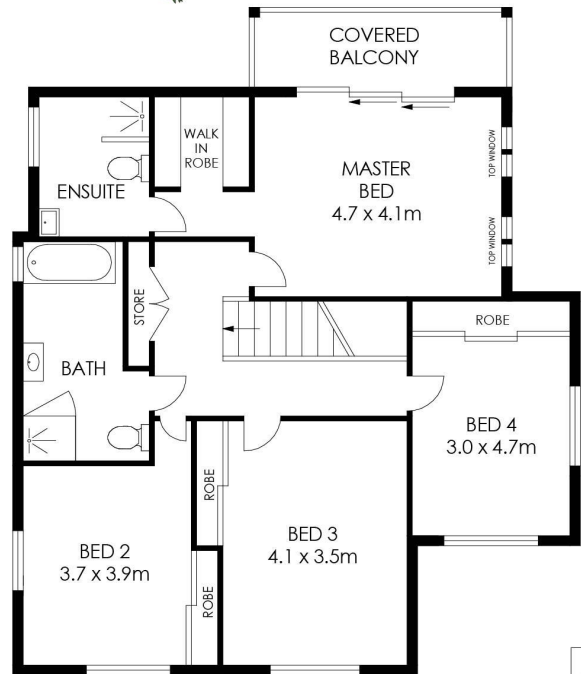
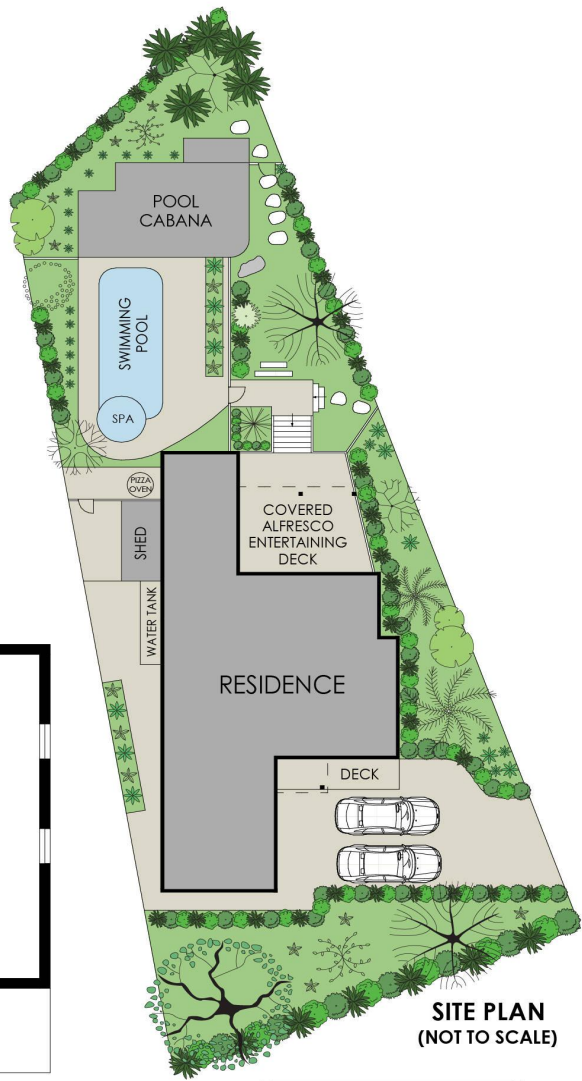
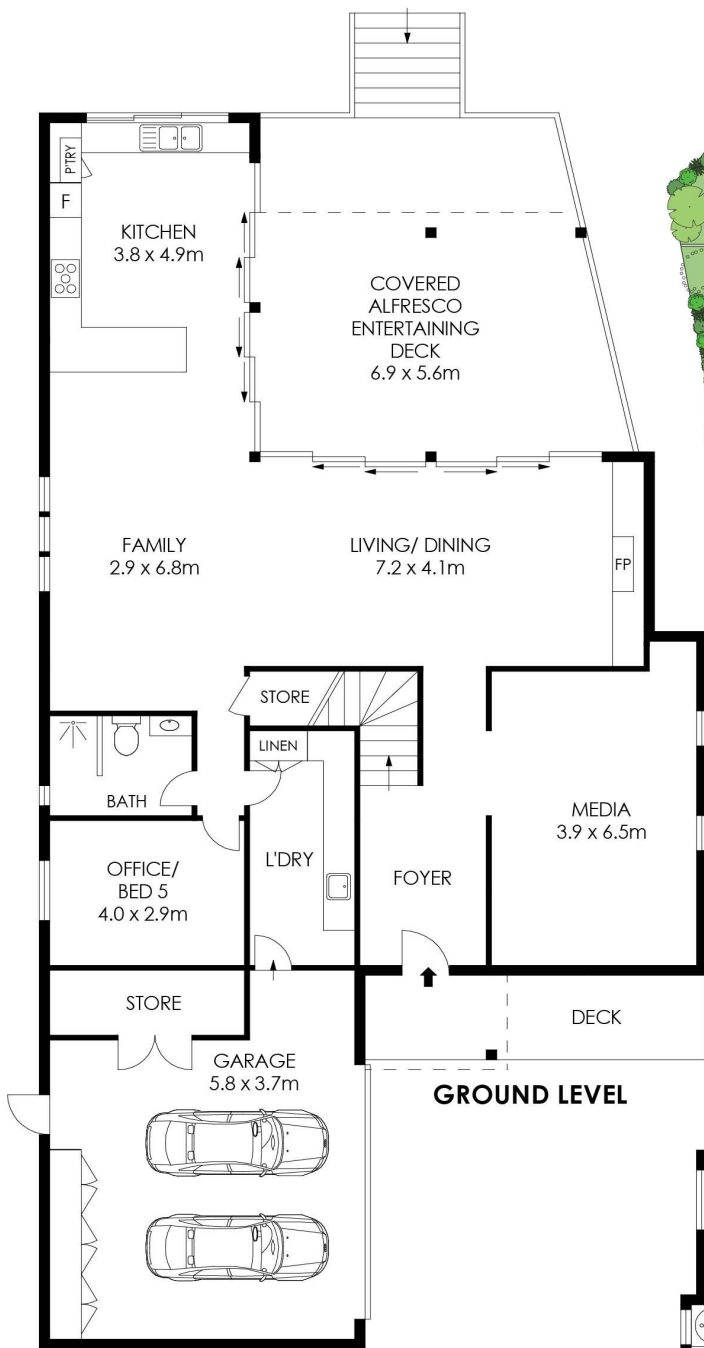
303 Barrenjoey Road, NEWPORT NSW 2106

newport.ljhooker.com.au | newport@ljhnewport.com.au



**LJ Hooker Newport
(02) 9979 1111**

Disclaimer: All information contained therein is gathered from relevant third parties sources. We cannot guarantee or give any warranty about the information provided. Interested parties must rely solely on their own enquiries.



APPROX. INTERNAL AREA = 294 m²
 APPROX. EXTERNAL AREA = 61 m²
 TOTAL = 355 m²
 LAND SIZE = 958 m²

PLANS SHOWN ONLY INDICATIVE OF LAYOUT. DIMENSIONS ARE APPROXIMATE.



66 Crescent Road, Newport



LJ Hooker Newport
 (02) 9979 1111

Disclaimer: All information contained therein is gathered from relevant third parties sources. We cannot guarantee or give any warranty about the information provided. Interested parties must rely solely on their own enquiries.