



Newport, 60 Hillside Road

N/E with Ocean Vistas —Charming Coastal Retreat -
Unparalleled Privacy

Embrace the best of coastal living at this charming property, set amidst some of the northern beaches' most breathtaking scenery.

Overlooking Newport Beach, you'll feel like you are part of the picturesque vistas that stretch out before you.

Fall asleep to the sounds of the waves as they kiss the shore and wake to dazzling panorama. You will be amazed how soothing the sounds of the varied bird life that inhabit the lush canopy.

The well-designed floor plan provides ample space for comfortable living, with two levels featuring north-east facing decks and the flexibility for independent living on one level and potential for self-sufficient quarters for family members on the lower level.



Disclaimer: All information contained therein is gathered from relevant third parties sources. We cannot guarantee or give any warranty about the information provided. Interested parties must rely solely on their own enquiries.



For Sale
Auction Guide \$2,500,000

View
ljhooker.com.au/2VRXF6K

Contact
Lachlan Elder
0418 224 180
lelder@ljhmv.com.au
Rebecca James
0414 686 333
rjames@ljhmv.com.au

LJ Hooker Mona Vale
(02) 9979 8000

With a prime north-easterly aspect, you'll enjoy intimate views of Newport Reef, where you can spot whales and admire beautiful rainbows. To nurture your creativity, the property features a dedicated art studio, workshop, and craft room. Draw inspiration from the natural beauty that surrounds you and create your next masterpiece in this idyllic setting.

Adjoining approximately 2.63 acres of protected littoral rainforest reserve, this updated 70's beach house offers a sense of privacy that's hard to find. Located at the end of a serene cul-de-sac with parking for 4 cars and benefiting from only one neighbour, this is your chance to experience true peace and quiet and see why it has been so tightly held for quarter of a century.

Discover the unparalleled beauty of Newport Beach and Porter's Reserve, connected by a picturesque bushland track. This exceptional location offers world-class surfing, fishing, and recreational activities, along with pristine sands and a tranquil rockpool.

If views, privacy and position are important to you this is a must to inspect without delay.

Disclaimer:

All information contained herewith, including but not limited to the general property description, price and the address, is provided to LJ Hooker Mona Vale by third parties. We have obtained this information from sources we believe to be reliable; however, we cannot guarantee its accuracy. The information contained herewith should not be relied upon and you should make your own enquiries and seek advice in respect of this property or any property on this website.

More About this Property

Property ID	2VRXF6K
Property Type	House
Land Area	787 m2
Including	Deck Dishwasher Outdoor Entertaining Floorboards Built-in-Robes

Lachlan Elder 0418 224 180

Principal, Licensed Real Estate Agent | lelder@ljhmv.com.au

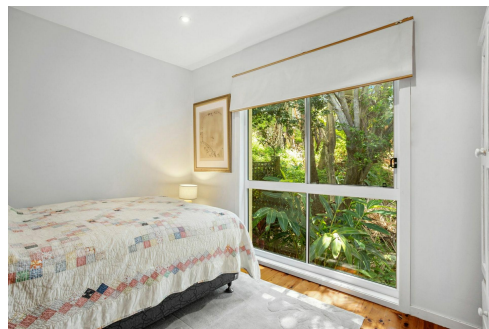
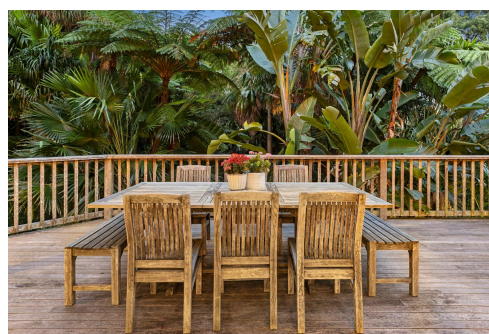
Rebecca James 0414 686 333

Licensed Real Estate Agent | rjames@ljhmv.com.au

LJ Hooker Mona Vale (02) 9979 8000

3/18 Bungan Street, MONA VALE NSW 2103

monavale.ljhooker.com.au | monavale@ljhmv.com.au



LJ Hooker Mona Vale
(02) 9979 8000

Disclaimer: All information contained therein is gathered from relevant third parties sources. We cannot guarantee or give any warranty about the information provided. Interested parties must rely solely on their own enquiries.



Whilst bwrn.com.au has made every attempt to ensure the accuracy of the floor plan contained here, measurements are approximate and no responsibility is taken for any error, omission, or mis-statement. This plan is for illustrative purposes only.



60 Hillside Road, Newport



LJ Hooker Mona Vale
(02) 9979 8000

Disclaimer: All information contained therein is gathered from relevant third parties sources. We cannot guarantee or give any warranty about the information provided. Interested parties must rely solely on their own enquiries.