



58 Attunga Road, Newport

## Truly Incredible Bilgola Beach Panorama, Newly Renovated North-Facing Residence

Perched on one of Newport's most coveted headlands, this recently renovated tri-level residence offers the ultimate in beachside family living. Thoughtfully designed to capture uninterrupted gun-barrel views across Bilgola Beach, recent renovations blend contemporary elegance with the relaxed charm of an luxury island villa - right in the heart of Sydney's Northern Beaches.

Bathed in sunlight thanks to its prized north-facing aspect, the home is beautifully protected and sun-drenched, all day long. Its cascading layout across three levels creates a harmonious flow between open-plan living zones and more intimate retreats, all enhanced by expansive bi-fold doors that invite the outdoors in.

Surrounded by lush tropical landscaping, the property is a haven for entertaining. Multiple alfresco zones - from balconies and sun-drenched decks with Sandstone Crazy Paving to a beautifully landscaped backyard - set the scene for long summer afternoons by the infinity pool, cocktail in hand. With filtered ocean views at almost every turn, wake up to resort-style living every single day.

5 🏠 3 🚿 3 🚗

### FOR SALE

For Sale

### VIEW

By Appointment

### AGENTS

Jake McDonall  
0402 740 085  
jmcdonall@ljhnewport.com.au

Jake McDonall  
0402 740 085  
jmcdonall@ljhnewport.com.au

### AGENCY

LJ Hooker Newport  
(02) 9979 1111

All information contained therein is gathered from relevant third parties sources.  
We cannot guarantee or give any warranty about the information provided.  
Interested parties must rely solely on their own enquiries.

 **LJ Hooker**

This is a rare opportunity to secure a charming, unpretentious sanctuary that embodies understated luxury and effortless coastal living.

**Key Features:**

- Elevated five-bedroom retreat with stunning ocean vistas
- North-facing with uninterrupted views from Bilgola Beach and Bilgola Headland out to the Ocean
- Freshly renovated interiors with bi-fold doors throughout, custom Oregon timber accents
- Tri-level open-plan design with spacious living areas across two floors
- Polished concrete and timber flooring throughout; crazy-paved sandstone decks
- Multiple outdoor entertaining areas, including upper deck, covered alfresco zones, infinity pool, spa, and level lawn
- Walk to the beach via private stairs from the bottom of the garden
- Four bedrooms, built-ins, optional fifth bedroom or study with private side access
- Master suite with walk-in robe, ensuite, and balcony with ocean vistas
- Three well-appointed bathrooms, the main bathroom featuring a freestanding bath and a double vanity
- CaesarStone kitchen with ample storage, large gas stove, and dishwasher
- Additional lower-level living space featuring a bar and internal laundry
- Air conditioning, ceiling fans, and gated security
- Triple garage with internal access plus additional street parking; easy level access in from the street
- Moments to beaches, shops, playgrounds, schools and buses to the city and Manly

**Disclaimer:**

All information contained herewith, including but not limited to the general property description, price and the address, is provided to LJ Hooker Newport by third parties. We have obtained this information from sources we believe to be reliable; however, we cannot guarantee its accuracy. The information contained herewith should not be relied upon and you should make your own enquiries and seek advice in respect of this property or any property on this website.

**MORE DETAILS**

Property ID	1B2GG5W
Property Type	House
Land Area	695 m2

**Jake McDonall 0402 740 085**

Sales Executive | [jmcdonall@ljhnewport.com.au](mailto:jmcdonall@ljhnewport.com.au)

**Jake McDonall 0402 740 085**

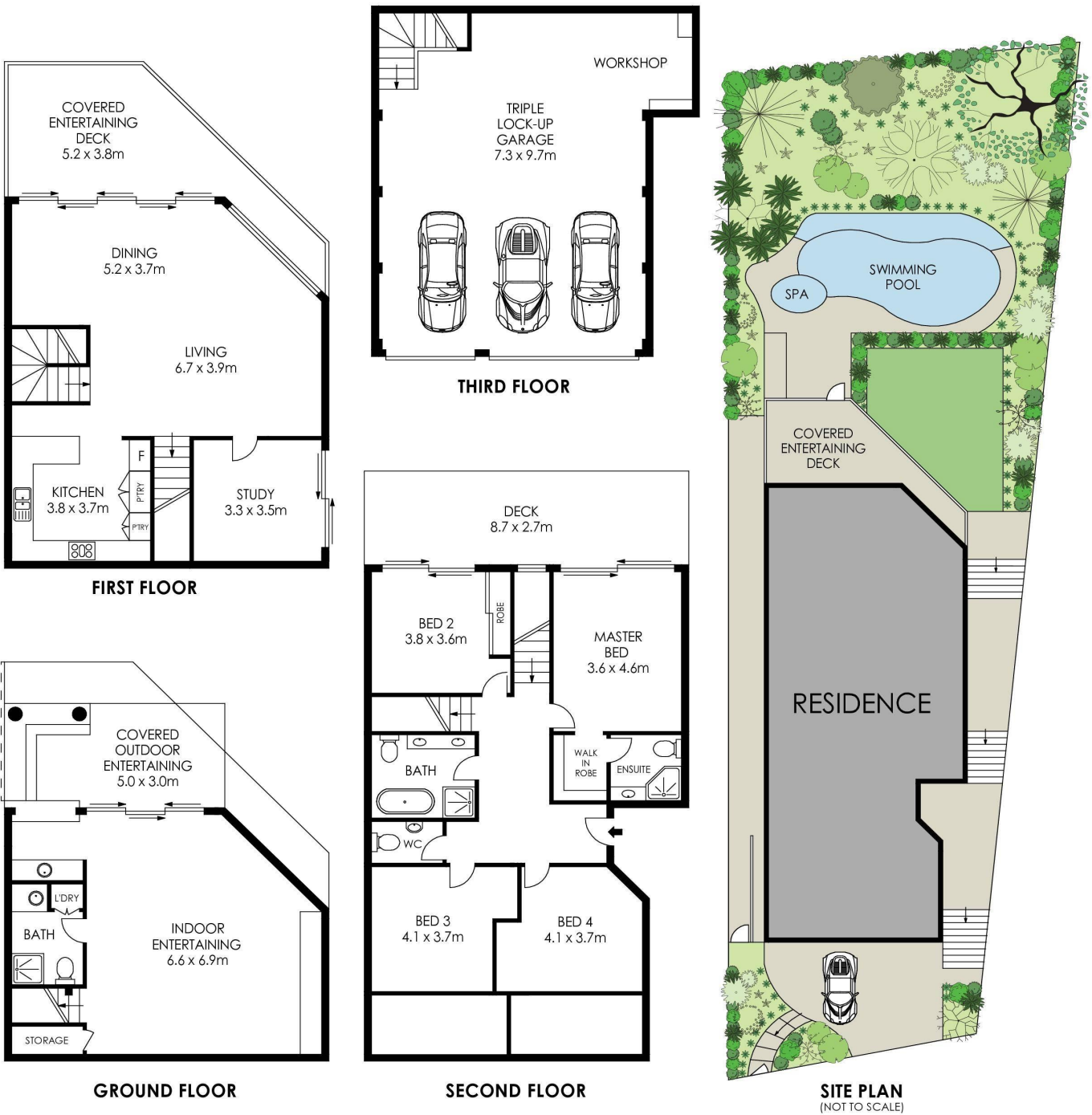
Sales Executive | [jmcdonall@ljhnewport.com.au](mailto:jmcdonall@ljhnewport.com.au)

**LJ Hooker Newport (02) 9979 1111**

303 Barrenjoey Road, NEWPORT NSW 2106

[newport.ljhooker.com.au](http://newport.ljhooker.com.au) | [newport@ljhnewport.com.au](mailto:newport@ljhnewport.com.au)





APPROX. INTERNAL AREA = 336 m<sup>2</sup>  
 APPROX. EXTERNAL AREA = 76 m<sup>2</sup>  
 TOTAL = 412 m<sup>2</sup>  
 LAND SIZE = 695 m<sup>2</sup>

PLANS SHOWN ONLY INDICATIVE OF LAYOUT. DIMENSIONS ARE APPROXIMATE.



## 58 Attunga Road, Newport



All information contained therein is gathered from relevant third parties sources.  
 We cannot guarantee or give any warranty about the information provided.  
 Interested parties must rely solely on their own enquiries.

