


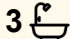
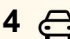


46 Grandview Drive, Newport

Coastal Retreat with Sweeping Ocean Views & Endless Versatility

Set high on Grandview Drive and framed by lush greenery, this substantial multi-level residence captures sweeping outlooks across Newport and the coastline beyond. Designed to embrace natural light, cooling sea breezes and effortless indoor/outdoor living, the home unfolds across a series of interconnected levels that offer both space and flexibility for modern family living. Positioned on a deep, established block with stunning elevated views, it presents a rare opportunity to secure a versatile home with exceptional future potential in one of Newport's most desirable settings.

Thoughtfully designed for families of all stages, the layout delivers multiple living zones, generous accommodation and flexible spaces ideal for working from home or multigenerational living. Expansive decks and balconies connect seamlessly with the interiors, creating inviting spaces to relax or entertain while overlooking leafy gardens and ocean vistas. With beautifully landscaped grounds, level driveway access and scope to further enhance with a pool or secondary accommodation (STCA), this is a home that combines lifestyle, comfort and long-term potential.

5  3  4 

FOR SALE

Guide \$2.395m - Inspect via Private Appt

VIEW

By Appointment

AGENTS

Jake McDonall
0402 740 085
jmcdonall@ljhnewport.com.au

Cherie Sevenoaks
0414 400 689
csevenoaks@ljhnewport.com.au

AGENCY

LJ Hooker Newport
(02) 9979 1111

All information contained therein is gathered from relevant third parties sources. We cannot guarantee or give any warranty about the information provided. Interested parties must rely solely on their own enquiries.



Features include:

- Elevated Newport position with sweeping ocean, beach and leafy district views
- Substantial multi-level residence offering exceptional space and flexibility
- Multiple living and entertaining zones designed for growing families
- Master retreat with luxury ensuite, walk-in wardrobe and private balcony access
- Three additional bedrooms with built-ins plus flexible study or fifth bedroom
- Open-plan lower living and dining flowing to expansive entertainer's deck
- Stone-topped kitchen with butler's pantry, premium appliances and adjoining bar area
- Covered alfresco deck with spa, framed by lush gardens and ocean outlooks
- Deep landscaped block with cascading gardens, established greenery and flourishing fruit trees
- Double garage with internal access, plus additional two parking spaces, and extensive storage throughout

Disclaimer:

All information contained herewith, including but not limited to the general property description, price and the address, is provided to LJ Hooker Newport by third parties. We have obtained this information from sources we believe to be reliable; however, we cannot guarantee its accuracy. The information contained herewith should not be relied upon and you should make your own enquiries and seek advice in respect of this property or any property on this website.

MORE DETAILS

Property ID	1B2PG5W
Property Type	House
Land Area	566 m2

Jake McDonall 0402 740 085

Sales Executive | jmcdonall@ljhnewport.com.au

Cherie Sevenoaks 0414 400 689

Senior Sales Executive & Licensee | csevenoaks@ljhnewport.com.au

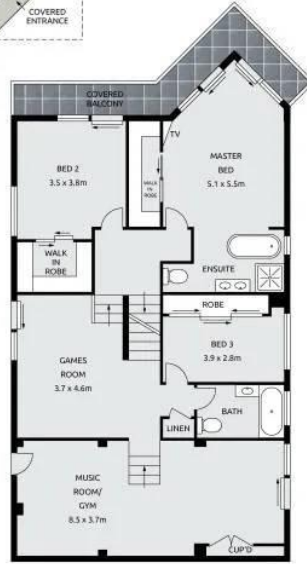
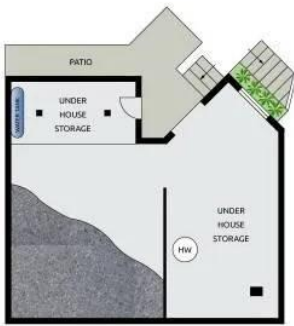
LJ Hooker Newport (02) 9979 1111

303 Barrenjoey Road, NEWPORT NSW 2106

newport.ljhooker.com.au | newport@ljhnewport.com.au



46 Grandview Drive, Newport



No warranty or guarantee is given that the plans shown herein represent the legal use or council approved use of the premises and are to be read as indicative only of the current visual space