



18 Hillside Road, Newport

## Live The Endless Summer, Beach-Side Dream

With wraparound ocean and valley views, and bathed in sunshine all day, this well-appointed home enjoys an enviable position overlooking Newport Beach. Immerse yourself in the best of the beach-side lifestyle: check out the break at the Peak before a short walk to the surf or to coffee in the lively village.

Every bedroom and all the living areas have horizon ocean views, including the generous master suite with its private ocean-facing balcony. The flexible floorplan, over three levels, is ideal for multigenerational living, guests or teens, as the lower ground floor (two bedrooms, living room and large tiled deck) has its own separate entrance.

Freshly renovated inside and out, the landscaping is low-maintenance with stone and tile finishes. Everything is ready to move in and enjoy a beach-side summer, while imagining how to make the flexible spaces work best for your needs.

Generous storage includes built-ins in every bedroom and dedicated storage rooms. Located moments to village shops, boutiques, schools, playing fields, popular beaches, golf courses and city buses.

Features Include:

- Elevated four-bedroom home + study with horizon ocean views

4 🏠 3 🚿 3 🚗

**FOR SALE**

\$3,600,000

**AGENTS**

Gordon Spring  
0418 210 219  
gspring@ljhnewport.com.au

Elizabeth Charlton  
0457 177 060  
lcharlton@ljhnewport.com.au

**AGENCY**

LJ Hooker Newport  
(02) 9979 1111

All information contained therein is gathered from relevant third parties sources. We cannot guarantee or give any warranty about the information provided. Interested parties must rely solely on their own enquiries.

 **LJ Hooker**

- Level access from the street to the main part of the home
- Multiple spaces to relax and watch the whales glide by
- Modern refinement, sleek interiors, contemporary lines
- Striking Newport Beach vistas from every bedroom
- Lower ground level ideal for multigenerational living or teens
- Panels of glass create an indoor-outdoor connection
- Bright stone-topped kitchen with hybrid gas/induction appliances
- Bedrooms with plush carpet, built-in robes and views
- Spacious master suite with dressing room, ensuite and balcony
- Warm and inviting bathrooms, floor-to-ceiling tiles, underfloor heating
- Abundant storage, including large dedicated storage rooms
- Traditional steam sauna, heated towel rails and bathtub
- Dual access and private entry enhances functionality
- Gas fireplace, ducted air-conditioning, carpet underfoot
- Paved forecourt with two parking spaces, connecting to outdoor terrace
- Covered outdoor space is ready to engage the new owner's imagination
- Located moments to beach, vibrant village restaurants and bars, shops
- Proximity to schools, golf courses and express buses

**Disclaimer:**

All information contained herewith, including but not limited to the general property description, price and the address, is provided to LJ Hooker Newport by third parties. We have obtained this information from sources we believe to be reliable; however, we cannot guarantee its accuracy. The information contained herewith should not be relied upon and you should make your own enquiries and seek advice in respect of this property or any property on this website.

**MORE DETAILS**

Property ID	1ATFG5W
Property Type	House
Land Area	419 m2
Including	Air Conditioning Toilets (1) Deck Close to Schools Close to Shops Close to Transport Ocean Views

**Gordon Spring 0418 210 219**

Principal | [gspring@ljhnewport.com.au](mailto:gspring@ljhnewport.com.au)

**Elizabeth Charlton 0457 177 060**

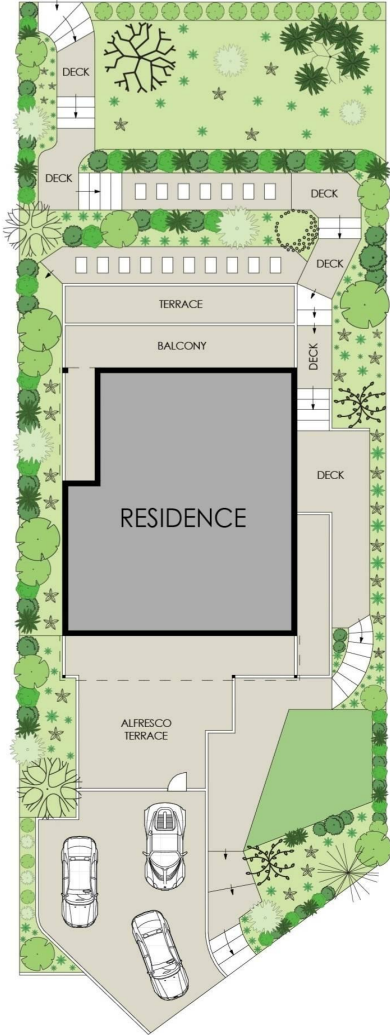
Executive Assistant | [lcharlton@ljhnewport.com.au](mailto:lcharlton@ljhnewport.com.au)

**LJ Hooker Newport (02) 9979 1111**

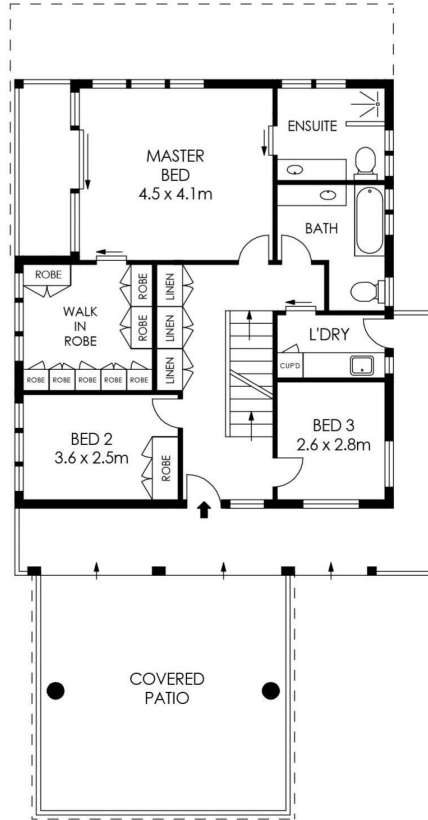
303 Barrenjoey Road, NEWPORT NSW 2106

[newport.ljhooker.com.au](http://newport.ljhooker.com.au) | [newport@ljhnewport.com.au](mailto:newport@ljhnewport.com.au)

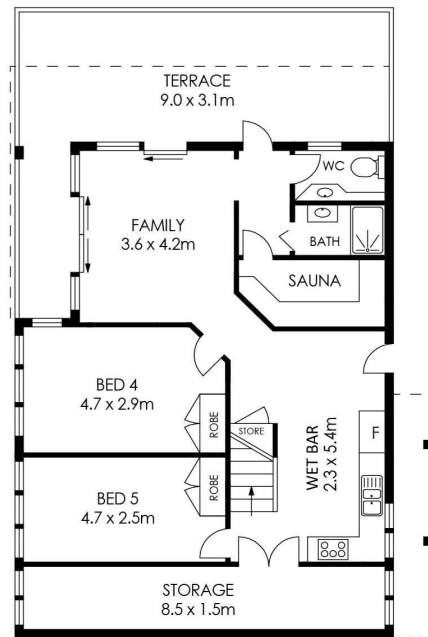




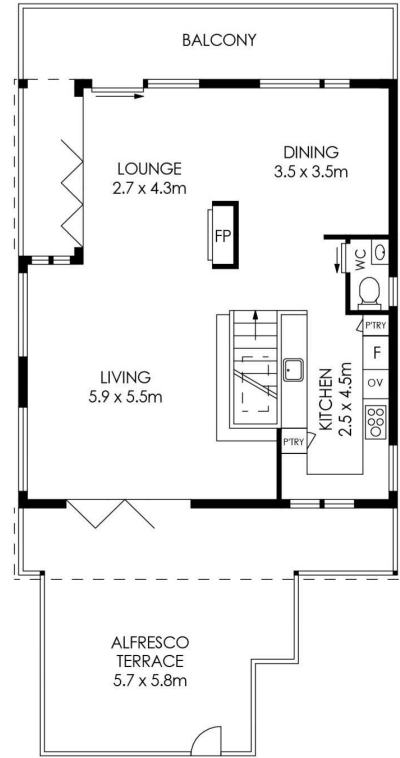
**SITE PLAN**  
(NOT TO SCALE)



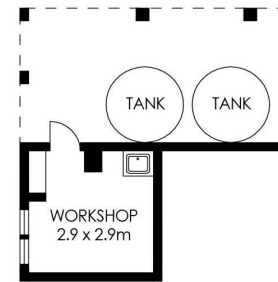
**ENTRY LEVEL**



**LOWER LEVEL**



**TOP LEVEL**



LAND SIZE = 419 m<sup>2</sup>

PLANS SHOWN ONLY INDICATIVE OF LAYOUT. DIMENSIONS ARE APPROXIMATE.



# 18 Hillside Road, Newport



All information contained therein is gathered from relevant third parties sources. We cannot guarantee or give any warranty about the information provided. Interested parties must rely solely on their own enquiries.

