



Sold



16 Wallumatta Road, Newport

Effortless Coastal Living with Timeless Mid-Century Charm

Rich in mid-century character and set on an expansive 809sqm block, this three-bedroom home is enveloped by established flowering gardens and leafy district surrounds. Floor-to-ceiling windows draw in natural light while inviting greenery deep into the interiors. Living and dining spaces centre around a stone fireplace, while the kitchen extends to an entertaining deck, placed for long afternoons outdoors beneath the trees.

Guest accommodation or a versatile second living area with dedicated entry enhances flexibility downstairs, ideal for extended living, creative pursuits or evolving households. A winding garden path leads to a peaceful cabana framed by frangipanis, hibiscus and sculptural succulents in bloom. Close to surf beaches, local schools and Newport village's cafés, dining and essentials.

Features Include:

- Mid-century home set on an expansive 809sqm block
- Established flowering gardens create lush surrounds
- Floor-to-ceiling windows invite light and greenery
- Living/dining centred around standout stone fireplace
- White timber floorboards create a fresh, airy aesthetic

3 2 2

FOR SALE
\$2,250,000

AGENTS

Jake McDonall
0402 740 085
jmcdonall@ljhnewport.com.au

Elizabeth Charlton
0457 177 060
lcharlton@ljhnewport.com.au

AGENCY

LJ Hooker Newport
(02) 9979 1111

All information contained therein is gathered from relevant third parties sources. We cannot guarantee or give any warranty about the information provided. Interested parties must rely solely on their own enquiries.



- Downstairs living or private guest accommodation
- High ceilings, split system air-conditioning, gas bayonet
- Kitchen extends to timber entertaining deck outdoors
- Stainless steel benchtop, white cabinetry, subway tiles
- Three bright bedrooms with calming leafy outlooks
- Refreshed bathrooms with integrated laundry space
- Peaceful cabana nestled amongst established plantings
- Garden path through blooming frangipanis and hibiscus
- Automatic single lock-up garage with driveway parking
- Close to beaches, schools and Newport village essentials

Disclaimer:

All information contained herewith, including but not limited to the general property description, price and the address, is provided to LJ Hooker Newport by third parties. We have obtained this information from sources we believe to be reliable; however, we cannot guarantee its accuracy. The information contained herewith should not be relied upon and you should make your own enquiries, and seek advice in respect of this property or any property on this website.

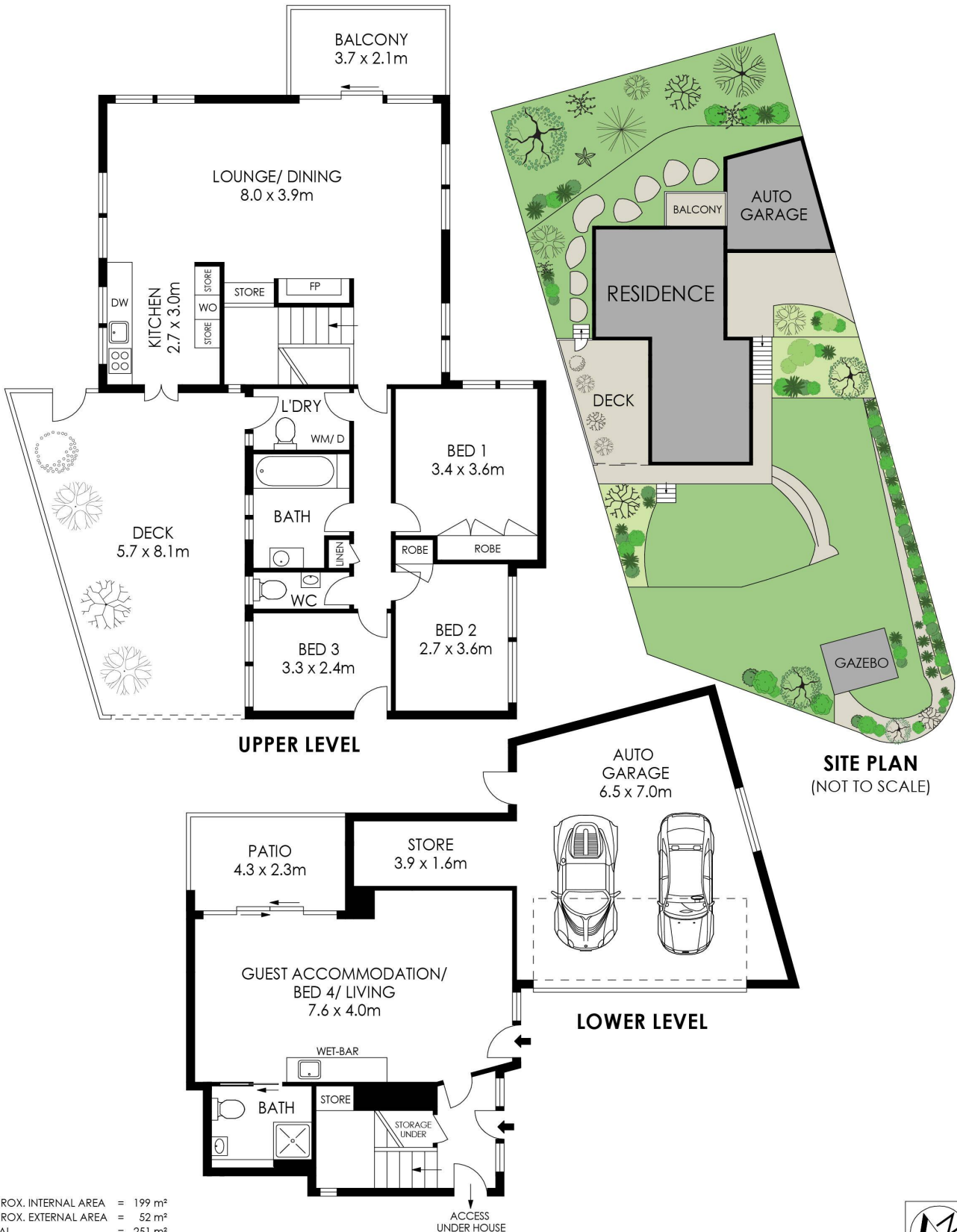
MORE DETAILS

Property ID	1AZUG5W
Property Type	House
Land Area	809 m2
Including	Courtyard Balcony Area Views Close to Schools Close to Shops Close to Transport

Jake McDonall 0402 740 085
Sales Executive | jmcdonall@ljhnewport.com.au
Elizabeth Charlton 0457 177 060
Executive Assistant | lcharlton@ljhnewport.com.au

LJ Hooker Newport (02) 9979 1111
303 Barrenjoey Road, NEWPORT NSW 2106
newport.ljhooker.com.au | newport@ljhnewport.com.au





APPROX. INTERNAL AREA = 199 m²
 APPROX. EXTERNAL AREA = 52 m²
 TOTAL = 251 m²
 LAND SIZE = 809 m²

PLANS SHOWN ONLY INDICATIVE OF LAYOUT. DIMENSIONS ARE APPROXIMATE.



16 Wallumatta Road, Newport



All information contained therein is gathered from relevant third parties sources. We cannot guarantee or give any warranty about the information provided. Interested parties must rely solely on their own enquiries.

