



Newport, 127A Crescent Road

Newport Gem on 1353sqm, North Facing Block!

Escape to tranquillity in this quiet and private haven! Nestled on a generous 1353sqm block, this north-facing gem bathes in natural light, creating a warm and inviting atmosphere. Consisting of three bedrooms and two renovated bathrooms, this near-level property holds incredible potential for expansion, allowing you to customize your dream home.

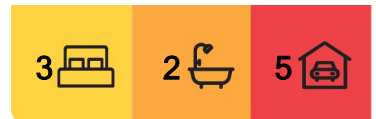
Features include:

- Double carport with ample off street parking
- Close to shops, beach, Newport Public School & The Newport
- Loads of under house storage
- Multiple outdoor entertaining areas
- Potential to extend and drop in a pool (STCA)
- Children's playground & carpark across the road



Disclaimer: All information contained therein is gathered from relevant third parties sources. We cannot guarantee or give any warranty about the information provided. Interested parties must rely solely on their own enquiries.

SOLD



For Sale
\$2,600,000

View
ljhooker.com.au/19KYG5W

Contact
Jake McDonall
0402 740 085
jmcdonall@ljhnewport.com.au
Jake McDonall
0402 740 085
jmcdonall@ljhnewport.com.au

LJ Hooker Newport
(02) 9979 1111

Seize the opportunity to create lasting memories in this beautiful north facing family home with future possibilities.

Disclaimer:

All information contained herewith, including but not limited to the general property description, price and the address, is provided to LJ Hooker Newport by third parties. We have obtained this information from sources we believe to be reliable; however, we cannot guarantee its accuracy. The information contained herewith should not be relied upon and you should make your own enquiries and seek advice in respect of this property or any property on this website.

More About this Property

Property ID	19KYG5W
Property Type	House
Land Area	1353 m ²

Jake McDonall 0402 740 085

Sales Executive | jmcdonall@ljhnewport.com.au

Jake McDonall 0402 740 085

Sales Executive | jmcdonall@ljhnewport.com.au

LJ Hooker Newport (02) 9979 1111

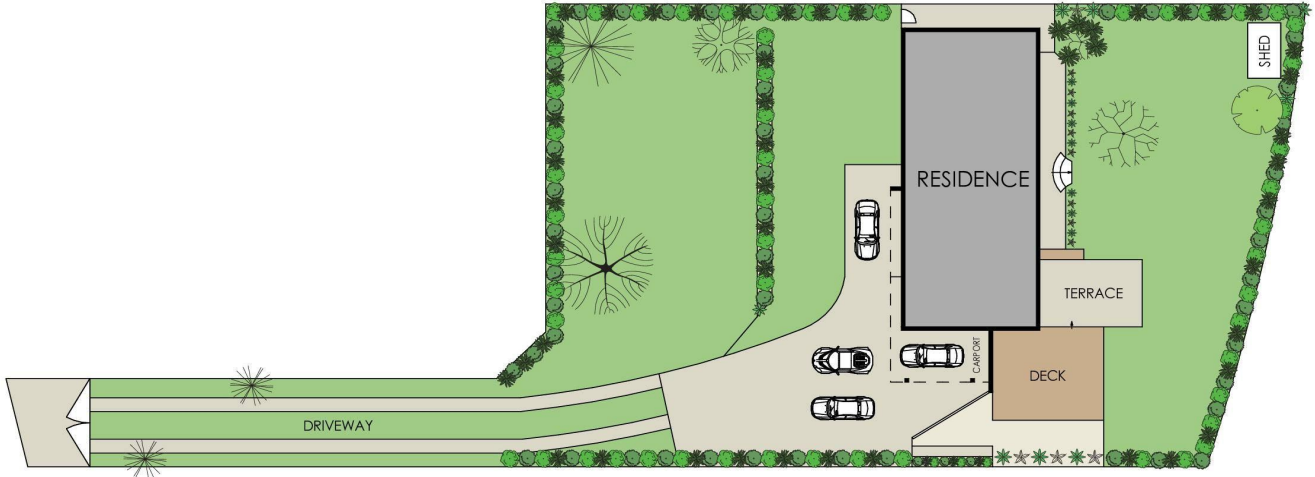
303 Barrenjoey Road, NEWPORT NSW 2106

newport.ljhooker.com.au | newport@ljhnewport.com.au

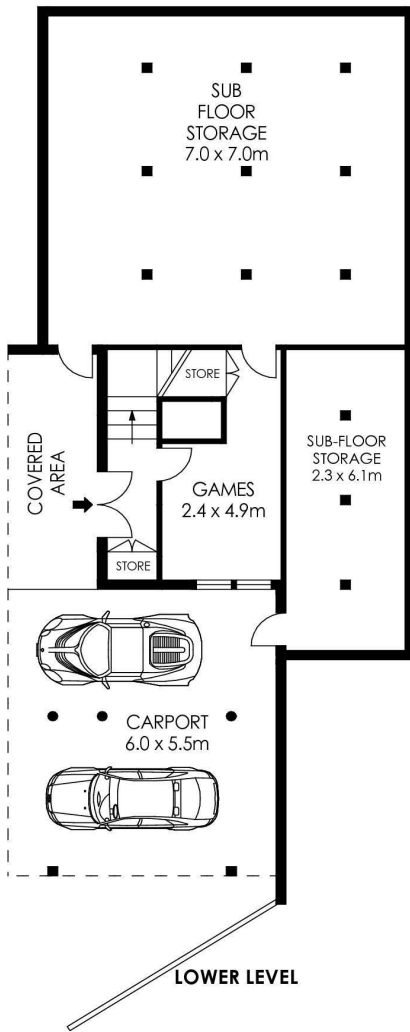


LJ Hooker Newport
(02) 9979 1111

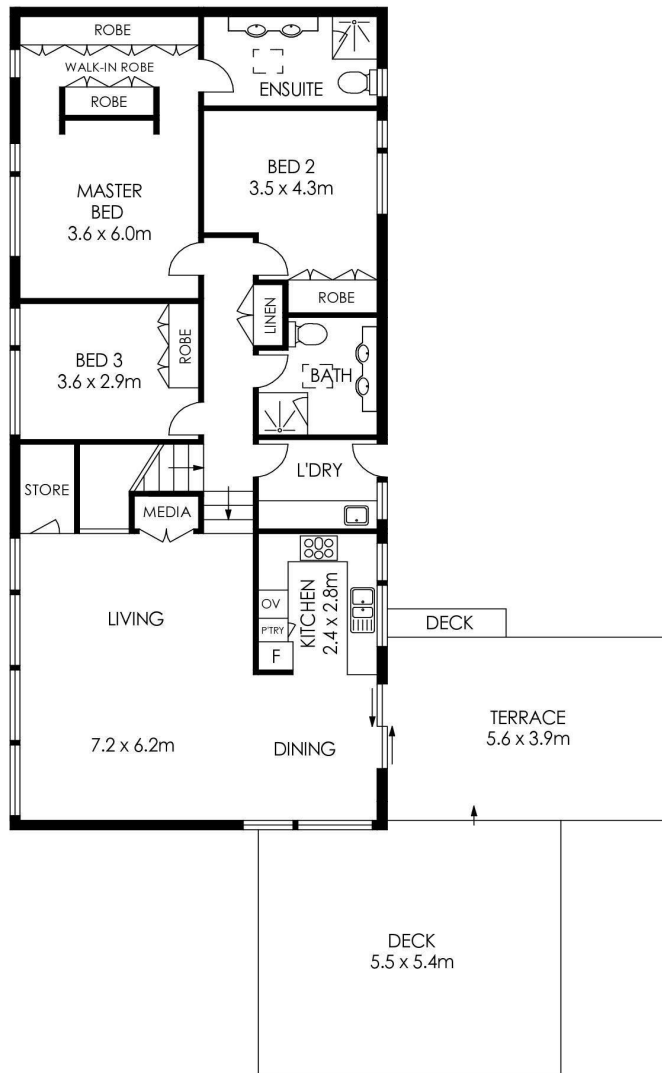
Disclaimer: All information contained therein is gathered from relevant third parties sources. We cannot guarantee or give any warranty about the information provided. Interested parties must rely solely on their own enquiries.



SITE PLAN
(NOT TO SCALE)



LOWER LEVEL



UPPER LEVEL

APPROX. INTERNAL AREA = 207 m²
 APPROX. EXTERNAL AREA = 97 m²
 TOTAL = 304 m²
 LAND SIZE = 1353 m²

PLANS SHOWN ONLY INDICATIVE OF LAYOUT. DIMENSIONS ARE APPROXIMATE.



127A Crescent Road, Newport



LJ Hooker Newport
(02) 9979 1111

Disclaimer: All information contained therein is gathered from relevant third parties sources. We cannot guarantee or give any warranty about the information provided. Interested parties must rely solely on their own enquiries.