



Newport

"ELYSIAN" - The Ultimate Waterfront Escape

A rare opportunity for those seeking sophistication and prime waterfront living.

Elysian offers an extraordinary chance to own a luxurious waterfront property, perfectly situated in one of Sydney's most prestigious and highly desirable neighbourhoods. This exclusive residence combines elegance, breathtaking views, and an unparalleled lifestyle. Effortless living combined flows out to extraordinary waterside pool and your own boathouse with slip.

Elysian is a four/five-bedroom architectural masterpiece that offers an unrivalled connection to the water. Set on an expansive, level, and private north-facing block, the home is bathed in all-day sunlight and delivers a rare sense of seclusion. A true waterfront lifestyle sanctuary framed by a sun-drenched Pittwater backdrop. The design prioritises space and light, with expansive glass doors opening to uninterrupted views of Pittwater's serene bays. The master suite is a haven of tranquility, complete with a bespoke walk-in



Disclaimer: All information contained therein is gathered from relevant third parties sources. We cannot guarantee or give any warranty about the information provided. Interested parties must rely solely on their own enquiries.

5

5

2

For Sale

Completion in July - Register your interest now

View

By Appointment

Contact

Peter Robinson

0401 219 077

peter.robinson@ljhooker.com.au

Dennis Kennelly

0477 977 971

dennis.kennelly@ljhooker.com.au

LJ Hooker Palm Beach
(02) 9974 5999

wardrobe and an ensuite adorned with premium stone finishes and dual vanities.

Each additional bedroom is generously sized, featuring custom joinery and ample natural light. The open-plan living space is centered around a stunning kitchen, where sleek, minimalist cabinetry meets high-performance appliances, creating the perfect setting for both casual meals and gourmet entertaining. Outside, lush Australian native gardens complement multiple terraces, offering an idyllic backdrop for outdoor dining and leisure, including a heated spa and a tiled lap pool with Sun Lover Oasis heating. A private boat house and slipway provide effortless access to the water, inviting residents to explore Pittwater's pristine waterways.

Waterfront lifestyle retreat with a sunlit, north-facing Pittwater backdrop.

A Harmonious blend of luxury and craftsmanship

The bathrooms feature Signorino Limestone Clay Natural tiles on both the floors and walls, enhanced by striking Calacatta Crema Smartstone feature walls and countertops. NAV Urban veneer cabinetry, brushed nickel fixtures from Faucet Strommen, and a sculptural egg-shaped Toronto Dado stone bath elevate the space.

Bedrooms

The bedrooms are appointed with plush Bremworth Tussock Sumac wool carpet, bespoke veneer cabinetry, and smooth plasterboard walls.

Kitchen

The kitchen and butler's pantry are finished with terrazzo concrete flooring, Taj Mahal Quartzite countertops and splashbacks, NAV Urban veneer cabinetry, and state-of-the-art appliances from Wolf Sub-Zero and Miele.

Living

Living areas and the entryway are distinguished by Victorian Ash Limed solid timber flooring, painted plasterboard walls, and seamless skirting, while an Escea DS1400 high-output frameless fireplace adds warmth and sophistication.

Cellar

The cellar integrates NAV Urban veneer walls, terrazzo floors, Champagne stone cladding, and a Whisper Cool temperature regulation system.

Outdoor Entertainment

The outdoor entertainment areas are designed with Valencia Bianco limestone paving, a heated spa, a tiled lap pool with Sun Lover Oasis heating, custom-built joinery, and a fully equipped BeefEater stainless steel BBQ station.

Laundry

The laundry is designed with a terrazzo concrete floor, painted plasterboard walls, and custom 2 Pac-finished cabinetry paired with Calacatta Crema Smartstone surfaces.

Additional Standout Features

These include an Infinity Lift, Elvox intercom, Daikin climate control, LED lighting, an Australian Sauna & Steam Rooms installation, and a solar energy and battery storage



LJ Hooker Palm Beach
(02) 9974 5999

Disclaimer: All information contained therein is gathered from relevant third parties sources. We cannot guarantee or give any warranty about the information provided. Interested parties must rely solely on their own enquiries.

system.

Craftsmanship

Architecturally designed by Mosman's Corben Architects and built by PWB Constructions, Elysian represents a collaboration of industry leaders committed to excellence. Every detail, from the selection of premium materials to the seamless integration of indoor and outdoor spaces, reflects a commitment to quality and longevity. The result is a residence that is not only visually stunning but also functional, enduring, and deeply connected to its breathtaking surroundings.

Location

Nestled in the prestigious Northern Beaches, where nature and convenience coexist harmoniously. Newport, Avalon, and Palm Beach are just moments away, offering boutique shopping, fine dining, and vibrant cafés. The nearby Royal Motor Yacht Club and Royal Prince Alfred Yacht Club provide premier boating facilities, while the area's scenic headlands, bushwalking trails, and hidden coves invite endless outdoor adventures. This is a location where lifestyle and luxury converge.

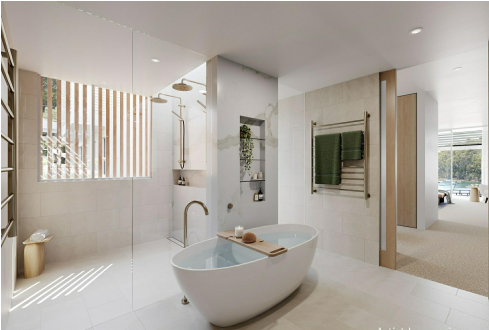
Construction is almost complete! Public inspections of the finished property will commence in August this year - contact us to arrange a pre-completion site inspection or to register your interest to be the first to view.

More About this Property

Property ID	B3CF6Z
Property Type	House
Land Area	831 m2
Including	Beach Front Pool Prestige Homes Water Views

Peter Robinson 0401 219 077
Principal – Peter Robinson Real Estate Pty Ltd CLN 10121506 | peter.robinson@ljhooker.com.au
Dennis Kennelly 0477 977 971
Licensed Real Estate Agent | Residential and Commercial | dennis.kennelly@ljhooker.com.au

LJ Hooker Palm Beach (02) 9974 5999
1073 Barrenjoey Road, PALM BEACH NSW 2108
palmbeach.ljhooker.com.au | office@ljhpb.com.au



Disclaimer: All information contained therein is gathered from relevant third parties sources. We cannot guarantee or give any warranty about the information provided. Interested parties must rely solely on their own enquiries.

LJ Hooker Palm Beach
(02) 9974 5999