

Newport, 1/28 Gladstone Street

THE ESSENCE OF RELAXED COASTAL LIVING

This first-floor 2-bedroom apartment presents an expansive layout within a corner setting, providing an ideal lifestyle retreat in a sought-after coastal enclave nestled between the beach and Pittwater. With a fluid indoor/outdoor layout it invites relaxation with a covered balcony offering a perfect spot for summer barbeques, plus an intimate east facing balcony off the master in which to unwind and soak up the sun. Make day to day living a breeze with an oversized lock-up garage and separate lockable storage. It is located an easy walk to Newport Village's cafes, dining, boutiques and shops, the beachfront, plus footsteps to Manly/CBD buses.

- Well-maintained kitchen with allocated dining space, living leading to balcony
- Open plan living area flows effortlessly to the undercover balcony
- Double size bedrooms with built-in robes, main bedroom opening to balcony



Disclaimer: All information contained therein is gathered from relevant third parties sources. We cannot guarantee or give any warranty about the information provided. Interested parties must rely solely on their own enquiries.



For Sale
\$940,000

View
ljhooker.com.au/1AA5G5W

Contact
Benjamin von Sperl
0448 912 012
bvonsperl@ljhnewport.com.au

Jake McDonall
0402 740 085
jmcdonall@ljhnewport.com.au

LJ Hooker Newport
(02) 9979 1111

- Original full bathroom with separate bath and shower, internal laundry room
- Corner block setting, NBN ready, gas heating, solid double brick building
- Immediately liveable with scope to add value & further modernise
- Single lock-up garage, and separate lock-up storage space
- Footsteps to Woolcott Reserve with its lovely community garden
- A prime lifestyle base, first home or smart investment opportunity
- Stroll to 'The Newport', Newport Beach, parks, ovals, Pittwater and ocean pool

Disclaimer:

All information contained herewith, including but not limited to the general property description, price and the address, is provided to LJ Hooker Newport by third parties. We have obtained this information from sources we believe to be reliable; however, we cannot guarantee its accuracy. The information contained herewith should not be relied upon and you should make your own enquiries and seek advice in respect of this property or any property on this website.

More About this Property

Property ID	1AA5G5W
Property Type	Apartment

Benjamin von Sperl 0448 912 012

Sales Executive | bvonsperl@ljhnewport.com.au

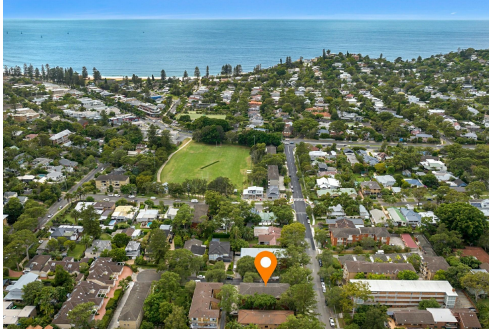
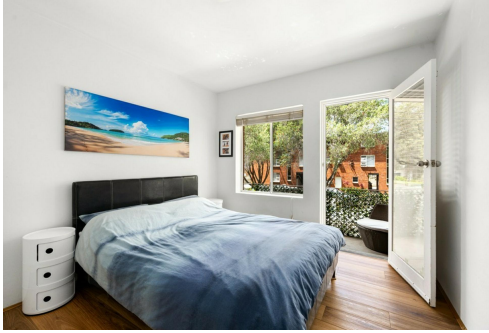
Jake McDonall 0402 740 085

Sales Executive | jmcdonall@ljhnewport.com.au

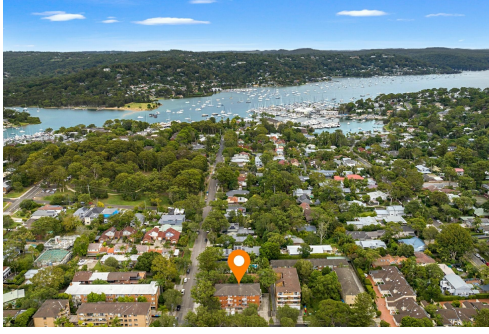
LJ Hooker Newport (02) 9979 1111

303 Barrenjoey Road, NEWPORT NSW 2106

newport.ljhooker.com.au | newport@ljhnewport.com.au

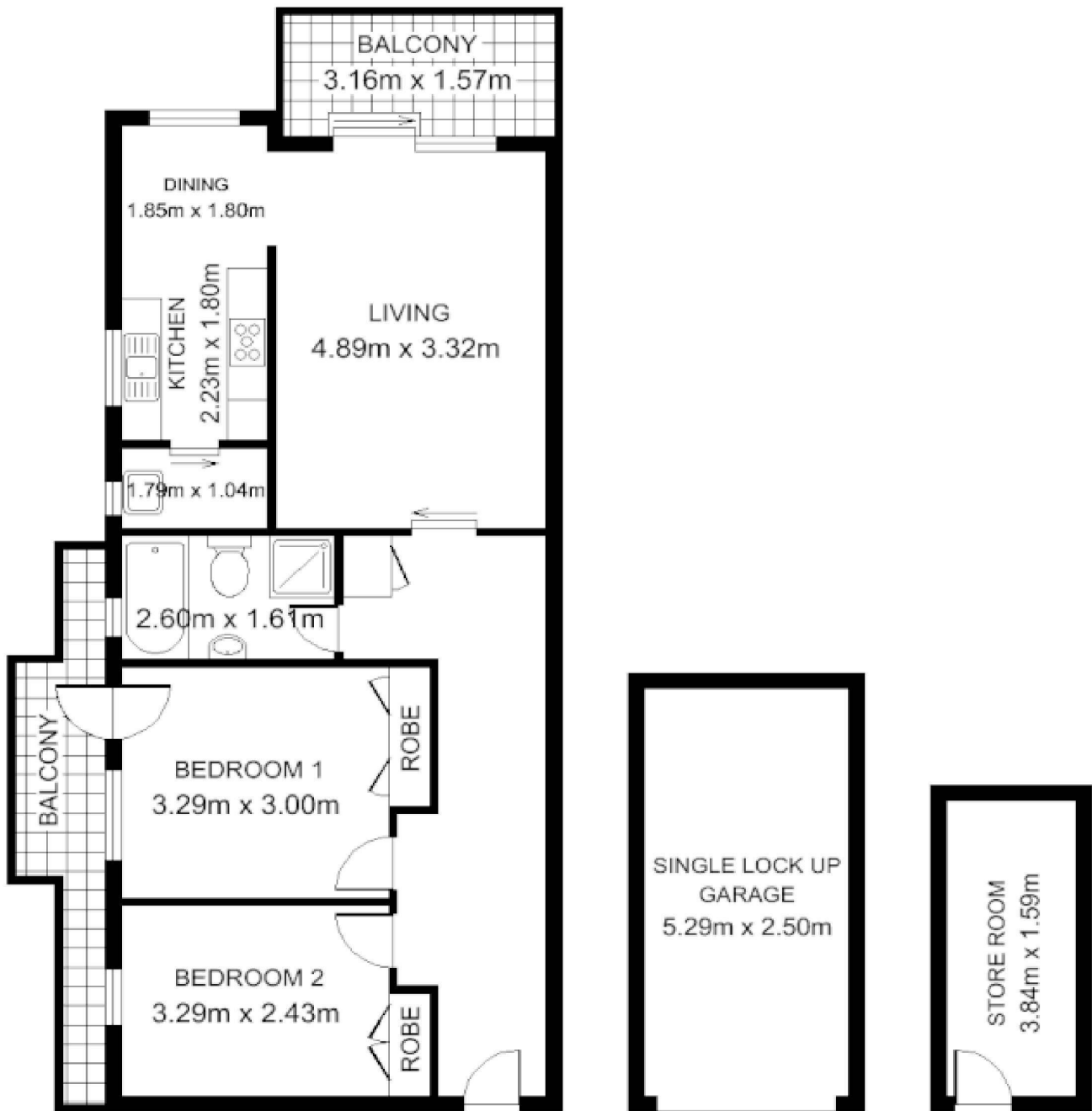


Woolcott Reserve
Newport Community Garden



LJ Hooker Newport
(02) 9979 1111

Disclaimer: All information contained therein is gathered from relevant third parties sources. We cannot guarantee or give any warranty about the information provided. Interested parties must rely solely on their own enquiries.



APPROX INTERNAL AREA INC BALCONY 79.9 SQM
 GARAGE FLOOR AREA 15.8 SQM
 ENTIRE AREA 102.2 SQM



PLANS SHOWN ONLY INDICATIVE OF LAYOUT. DIMENSIONS ARE APPROXIMATE.

1/28 Gladstone Street, Newport



LJ Hooker Newport
 (02) 9979 1111

Disclaimer: All information contained therein is gathered from relevant third parties sources. We cannot guarantee or give any warranty about the information provided. Interested parties must rely solely on their own enquiries.