

25 Mallard Close, Newlands Arm

ARE YOU LOOKING FOR SOMETHING WITH A DIFFERENCE?

Step inside this truly unique architect designed home where a grand entrance with automated slider doors welcomes you into a striking foyer complete with a designer glass wall water feature. The expansive living area impresses with soaring ceilings and seamless connection to the large undercover alfresco space, featuring a fireplace and a glimpse of the lake, perfect for year round entertaining. The granite topped designer kitchen offers exceptional style and functionality, boasting an oversized walk in pantry, 900mm electric stove with induction cooktop and two-drawer dishwasher. Indulge in the recently renovated main bedroom suite, complete with sliding door access to the deck, his and hers walk in robes and a luxurious ensuite. Enjoy the freestanding bath, walk in shower, twin basin vanity and a picture window framing the natural surroundings. Two additional bedrooms each feature built-in robes and a versatile multi-purpose room provides flexibility for work or leisure. Outdoor living shines with the expansive undercover alfresco area with vinyl plank flooring, fireplace and lake glimpses, as well as a second covered and decked entertaining space on the ground level, ideal for BBQs.

4 2 5

FOR SALE
\$1,100,000

VIEW
By Appointment

AGENTS
Lorraine Edlington
0437 532 860
ledlington.paynesville@ljhooker.com.au

AGENCY
LJ Hooker Paynesville | Lakes Entrance
| Metung
(03) 5156 6166

All information contained therein is gathered from relevant third parties sources.
We cannot guarantee or give any warranty about the information provided.
Interested parties must rely solely on their own enquiries.

LJ Hooker

Car accommodation is exceptional, offering two generous sized double garages plus extra-long single garage. Set at the end of a quiet court on a 5113m2 lifestyle allotment, this property offers complete privacy behind an electric entry gate. An asphalt driveway leads through low maintenance gardens, creating a true sense of being in a world of your own. Spoil yourself with a home that delivers style, space and standout architectural appeal.

MORE DETAILS

| | |
|---------------|----------------------|
| Property ID | MQ1FCA |
| Property Type | House |
| House Size | 374.18 m2 |
| Land Area | 5113 m2 |
| Including | Ensuite |
| | Air Conditioning |
| | Dishwasher |
| | Outdoor Entertaining |
| | Fully Fenced |
| | Remote Garage |

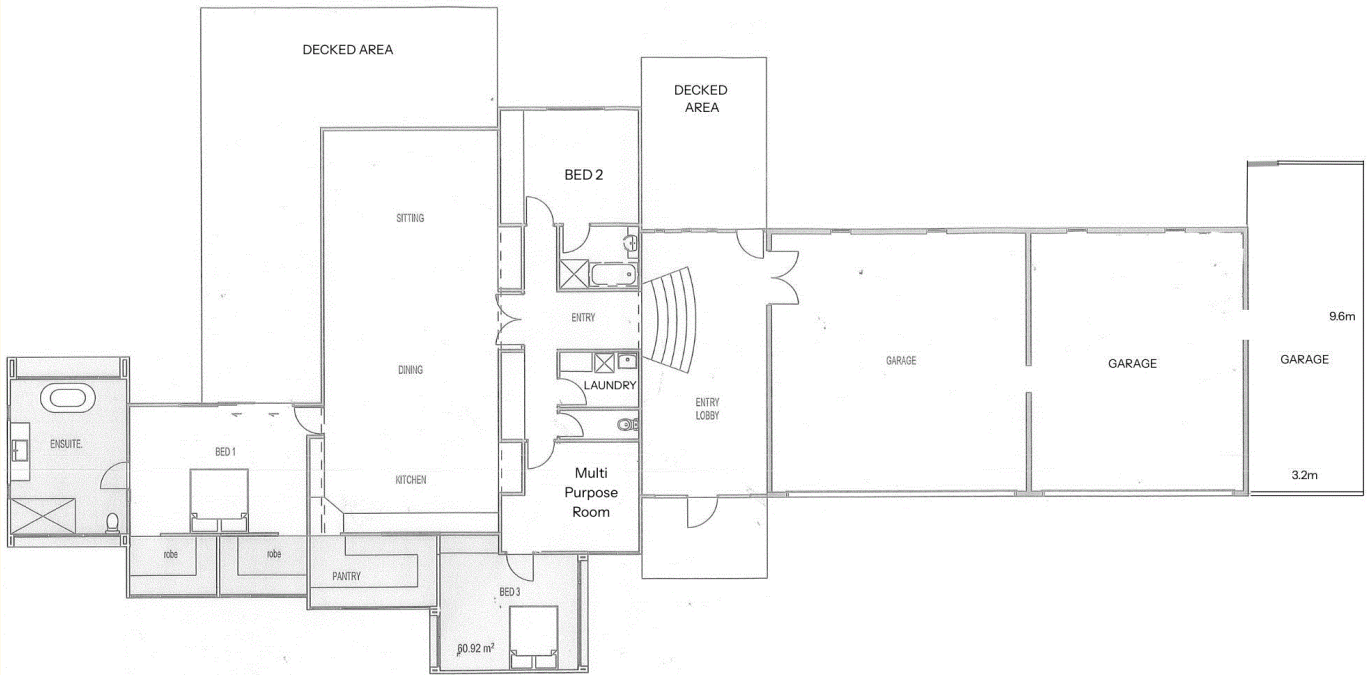
Lorraine Edlington 0437 532 860

Officer In Effective Control | Licensed Estate Agent |
ledlington.paynesville@ljhooker.com.au

LJ Hooker Paynesville | Lakes Entrance | Metung (03) 5156 6166

25A Esplanade, PAYNESVILLE VIC 3880
paynesville.ljhooker.com.au | paynesville@ljhooker.com.au





Paynesville | Lakes Entrance | Metung

Disclaimer: Whilst every attempt has been made to ensure the accuracy of this floorplan, measurements of doors, windows, rooms and any other items are approximate only. The producer or the agent cannot be held responsible for any errors, omissions or misstatements. This plan is for illustrative purposes only and should be used as such.

All information contained therein is gathered from relevant third parties sources. We cannot guarantee or give any warranty about the information provided. Interested parties must rely solely on their own enquiries.

