



## Newington, 2/1 Heidelberg Avenue

Sold - David Pisano

Parkside Location with Huge Entertainers Terrace, 215sqm

A generous and light filled retreat designed for easy maintenance and enjoyment, this immaculately presented full brick apartment boasts a generous 215sqm floor plan with a rarely seen oversized outdoor terrace, perfect for entertaining. Peacefully placed on the first floor of the "Doncaster" low rise security building, it has just been refreshed and renovated offering the lucky buyer a "nothing to spend" opportunity and ultra-convenient location, just moments to Newington village Marketplace and public school, buses to Strathfield / Burwood / Parramatta, waterfront parks, and with a host of lifestyle facilities at your doorstep.

- \* Oversized floor plan of 215sqm, full brick construction
- \* Newly painted, new floating flooring and new carpets
- \* Spacious open plan living/dining with air-conditioning



**Disclaimer:** All information contained therein is gathered from relevant third parties sources. We cannot guarantee or give any warranty about the information provided. Interested parties must rely solely on their own enquiries.

**SOLD**

2

2

1

**For Sale**  
Sold

**View**  
[ljhooker.com.au/TMGFAX](http://ljhooker.com.au/TMGFAX)

**Contact**  
**David Pisano**  
0408 835 606  
[david@ljhstrathfield.com.au](mailto:david@ljhstrathfield.com.au)  
**Matthew Mezzapica**  
0452 355 606  
[matthew@ljhstrathfield.com.au](mailto:matthew@ljhstrathfield.com.au)

**LJ Hooker Strathfield**  
(02) 9746 2222



- \* Two huge bedrooms with b/ins, main with plush ensuite
- \* Huge entertainers' terrace plus second rear balcony
- \* Sleek kitchen, s/steel gas appliances, dishwasher
- \* Two full bathrooms, internal laundry, ample storage
- \* Private park front aspect with leafy open outlook
- \* Intercom entry, secure car space, quality building
- \* Perfect first home, scale down option or investment
- \* The largest apartment in the building, sure to impress

Set within the heart of Sydney and just 17km from the CBD, this property will delight those seeking a convenient, move-in-ready option in a family friendly community.

Strata Levies: \$1,168.80 per quarter approx.

Council Rates: \$410.00 per quarter approx.

Water Rates: \$175.98 per quarter approx.

Details: David Pisano - 0408 835 606

Matthew Mezzapica - 0452 355 606

## More About this Property

<b>Property ID</b>	TMGFAX
<b>Property Type</b>	Apartment
<b>House Size</b>	215 m2
<b>Including</b>	Air Conditioning Intercom Balcony Dishwasher Outdoor Entertaining Floorboards Built-in-Robes Secure Parking

**David Pisano 0408 835 606**

Licensee In Charge | david@ljhstrathfield.com.au

**Matthew Mezzapica 0452 355 606**

Sales Associate | matthew@ljhstrathfield.com.au

**LJ Hooker Strathfield (02) 9746 2222**

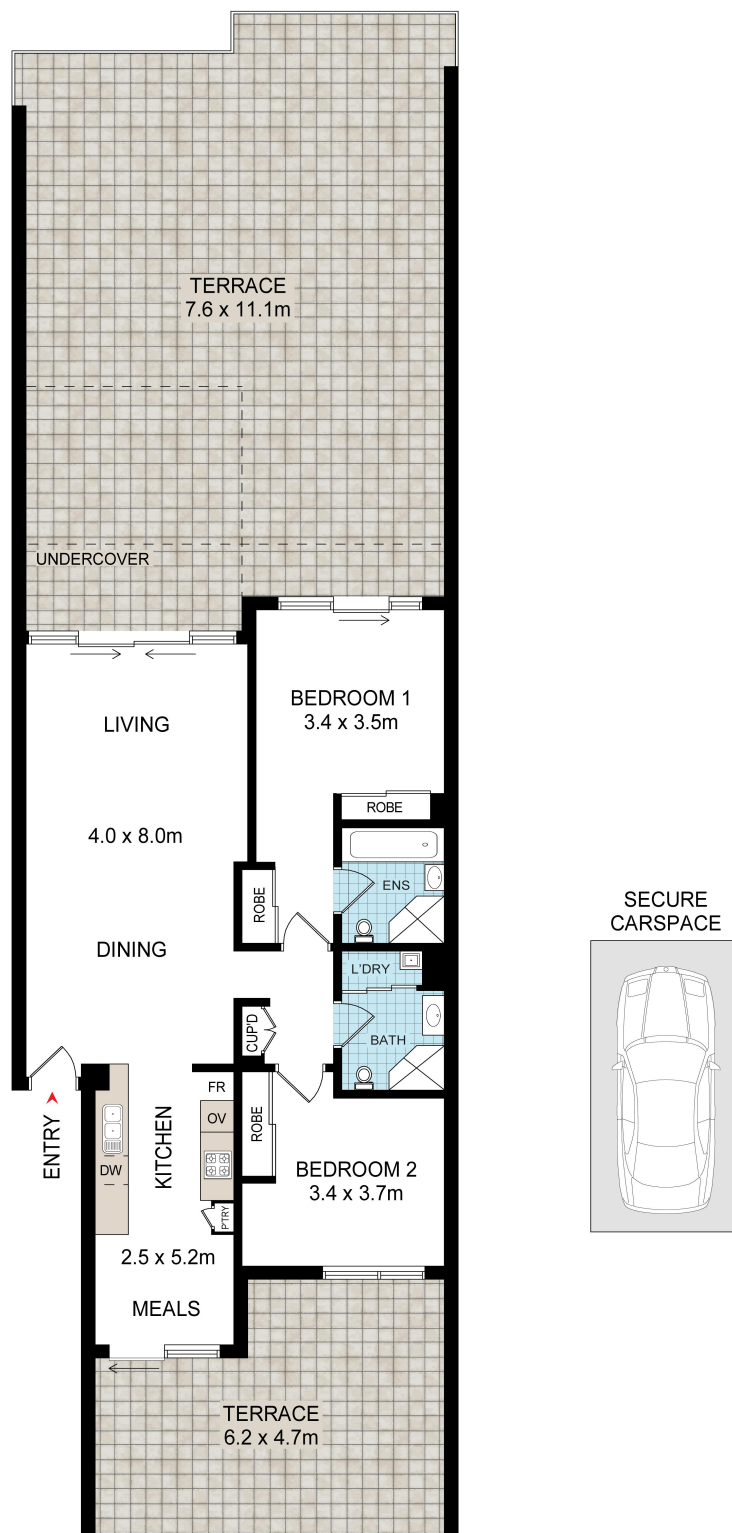
2 Albert Road, STRATHFIELD NSW 2135

strathfield.ljhooker.com.au | info@ljhstrathfield.com.au



**Disclaimer:** All information contained therein is gathered from relevant third parties sources. We cannot guarantee or give any warranty about the information provided. Interested parties must rely solely on their own enquiries.

**LJ Hooker Strathfield**  
**(02) 9746 2222**



## 2/1-3 HEIDELBERG AVENUE, NEWINGTON

DISCLAIMER: WE HAVE OBTAINED ALL INFORMATION IN THIS DOCUMENT FROM SOURCES WE BELIEVE TO BE RELIABLE; HOWEVER, WE CANNOT GUARANTEE ITS ACCURACY. PROSPECTIVE PURCHASERS ARE ADVISED TO CARRY OUT THEIR OWN INVESTIGATIONS