

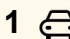




201/1-2 Tarni Court, New Port

1  1  1 

Modern Living with Marina Views

Best Offer By Wed. 26th Nov. at 3:00pm (USP)

Enjoy this rare opportunity to secure modern waterfront living with breathtaking marina views. Positioned on the second floor of the exclusive New Port development, this one-bedroom apartment offers a sophisticated lifestyle framed by light, space, and a seamless connection to the water.

Perfectly suited for first home buyers, downsizers, or investors, this residence combines contemporary design with a spacious open layout, ideal for entertaining or simply enjoying the tranquil marina backdrop.

The Highlights:

- Updated one-bedroom apartment with panoramic waterfront views
- Positioned on the 2nd level of a secure complex
- Open-plan kitchen, dining and living area with abundant natural light
- Quality kitchen with stainless steel appliances, gas cooktop, dishwasher and stone benchtops
- Expansive tiled balcony and deck area, perfect for entertaining, dining, or relaxing while

FOR SALE
UNDER OFFER

AGENTS

Gerard Pacillo
0431 596 145
gerard@ljhfp.com.au

AGENCY

LJ Hooker Flinders Park
(08) 8352 1155

All information contained therein is gathered from relevant third parties sources.
We cannot guarantee or give any warranty about the information provided.
Interested parties must rely solely on their own enquiries.

 **LJ Hooker**

soaking up the water views

- Spacious master bedroom with built-in robe and direct balcony access
- Fully tiled bathroom with frameless shower and modern fittings
- Split-system air conditioning for year-round comfort
- Secure undercover car parking
- Access to resort-style facilities including a heated indoor pool, spa, sauna, steam room and gym
- Situated within the Spinnaker North complex, renowned for its privacy, quality and lifestyle appeal

Location Insight:

Set in one of Adelaide's most desirable waterfront communities, New Port delivers a peaceful marina lifestyle just 14 km from the CBD and only minutes from Semaphore Road, the Port Adelaide precinct, and local beaches. The area offers a unique blend of modern apartment living, maritime character and convenience, with cafés, restaurants, cycling paths and train links right on your doorstep.

Offering exceptional value and enviable views, this apartment presents a rare chance to experience coastal luxury in a secure and connected setting, move in ready, easy to maintain, and impossible to overlook.

For more information contact:
Gerard Pacillo 0431 596 145

To register your interest or to make an offer, click the link below:
<https://prop.ps//cM5w2HdtSEU0>

Disclaimer:

This property is being sold without a price and therefore a price guide cannot be provided. The website may have filtered the property into a price bracket for website functionality purposes.

Whilst every effort has been made to ensure the accuracy of these particulars, no warranty is given by the vendor or the agent as to their accuracy. Interested parties should not rely on these particulars as representations of fact but must instead satisfy themselves by inspection or otherwise.

RLA 215339

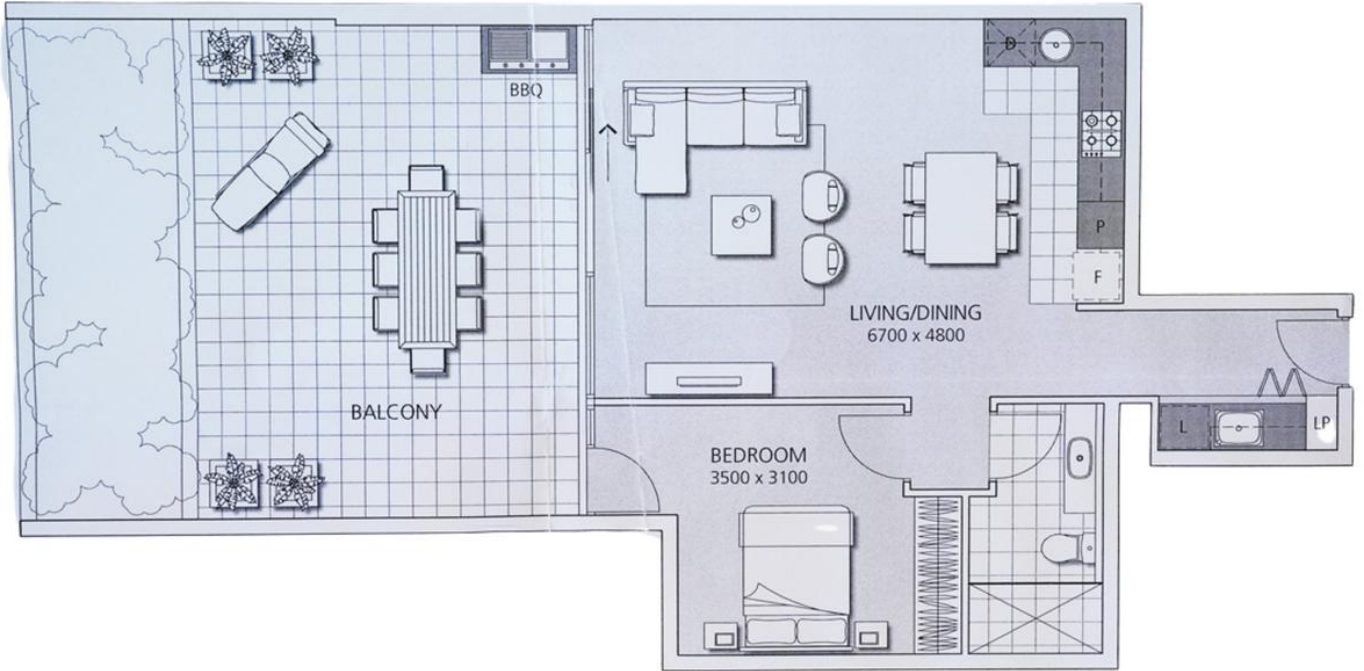
MORE DETAILS

Property ID	JHYH67
Property Type	Apartment
House Size	116 m2
Including	Toilets (1)

Gerard Pacillo 0431 596 145
Property Consultant | gerard@ljhfp.com.au

LJ Hooker Flinders Park (08) 8352 1155
Suite 2/166-168 Grange Road, FLINDERS PARK SA 5025
flinderspark.ljhooker.com.au | flinderspark@ljhfp.com.au





All information contained therein is gathered from relevant third parties sources.
We cannot guarantee or give any warranty about the information provided.
Interested parties must rely solely on their own enquiries.