

New Norfolk, 89 High Street

Walk to everything! Charming 1950 Home by the park

Picture yourself strolling into a charming 1950s brick home, lovingly upgraded with a fresh coat of paint, a brand-new kitchen and stylish flooring. That's what you'll find at 89 High Street New Norfolk, nestled just a stone's throw from the town's bustling centre.

This two-bedroom beauty boasts two generous sized bedrooms, a spacious lounge with a cozy wood heater and a modern fully equipped kitchen that'll inspire your inner chef. The separate dining room, complete with a fireplace, is the perfect spot for intimate dinners or casual family gatherings.

Original features like Bakelite switches and glazed doors between the lounge and dining areas add a touch of nostalgia, while laminated timber effect floors ensure modern style and durability.

Located just a short walk from the heart of New Norfolk, you'll have shops, cafes,



Disclaimer: All information contained therein is gathered from relevant third parties sources. We cannot guarantee or give any warranty about the information provided. Interested parties must rely solely on their own enquiries.



For Sale
Please Call

View
ljhooker.com.au/5VYJFCS

Contact
Nick Emery
0439 554 623
nemery@ljhookerpinnacle.com

LJ Hooker Pinnacle Property
(03) 6272 8177

restaurants, schools, and parks right at your doorstep. The home is also within easy reach of Hobart, making it the ideal choice for those who want the best of both worlds.

Whether you're an investor, a first-home buyer, or seeking a life of ease and enjoyment, 89 High Street New Norfolk is sure to capture your heart. With its blend of character, convenience, and modern comfort, this exquisite residence is a true gem.

Don't miss this opportunity call Nick today to arrange an inspection.

Key Features:

- High ceilings
- Two large bedrooms
- Spacious living areas with a wood heater
- Separate dining room with a fireplace
- Reverse cycle air-conditioner
- Modern fully equipped kitchen
- Original features like Bakelite switches
- Convenient location close to Arthur Square Park, shops, and amenities

The information contained herein has been supplied to us and we have no reason to doubt its accuracy, however, cannot guarantee it. Accordingly, all interested parties should make their own enquiries to verify this information.

More About this Property

Property ID	5VYJFCS
Property Type	House
House Size	110 m ²
Land Area	316 m ²
Including	Air Conditioning Fire Place Courtyard Dishwasher

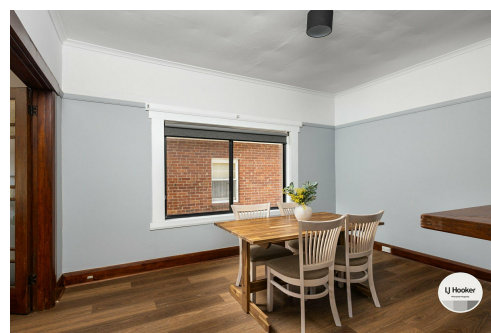
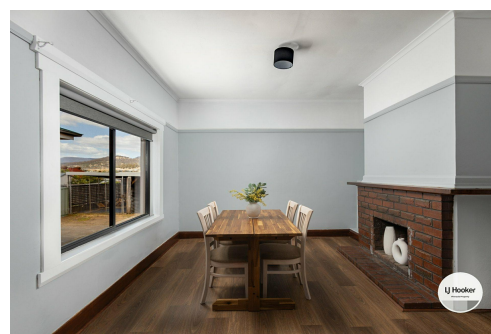
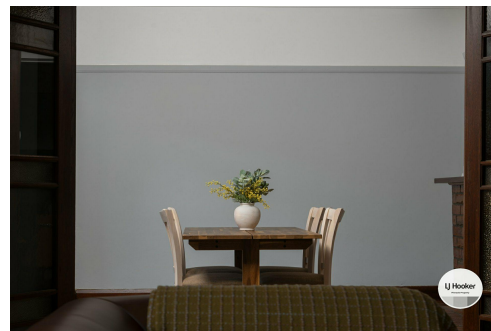
Nick Emery 0439 554 623

Sales Consultant | nemery@ljhookerpinnacle.com

LJ Hooker Pinnacle Property (03) 6272 8177

402 Main Road, GLENORCHY TAS 7010

pinnacleproperty.ljhooker.com.au | hello@ljhookerpinnacle.com

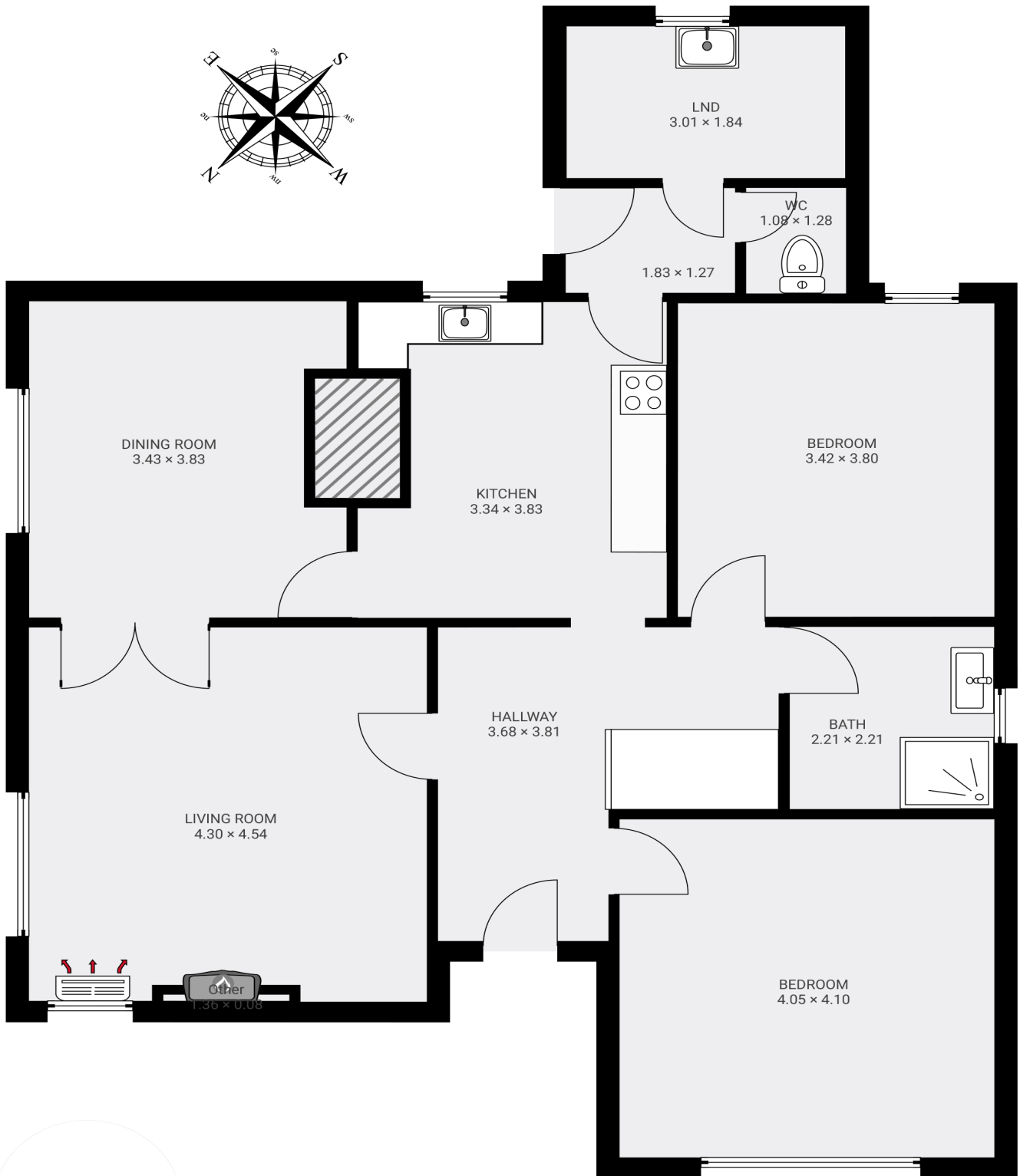


Disclaimer: All information contained therein is gathered from relevant third parties sources. We cannot guarantee or give any warranty about the information provided. Interested parties must rely solely on their own enquiries.

**LJ Hooker Pinnacle Property
(03) 6272 8177**

▼ Ground Floor

TOTAL AREA: 117.36 m² • LIVING AREA: 115.72 m² •



This Floor-plan should be used as a guide only for marketing purposes.



LJ Hooker Pinnacle Property
(03) 6272 8177

Disclaimer: All information contained therein is gathered from relevant third parties sources. We cannot guarantee or give any warranty about the information provided. Interested parties must rely solely on their own enquiries.