

New Norfolk, 5 Seventh Avenue

Enchanting Gardens, Versatile Home, Development Potential STCA

Welcome to your new family haven in the flourishing suburb of New Norfolk. This charming property presents a rare opportunity to secure a spacious and inviting home, perfect for those seeking a comfortable family lifestyle.

Nestled on a generous land area of approximately 1,446 sqm that could offer development opportunities (STCA), this well-maintained residence offers a blend of traditional charm and modern convenience. As you step through the elegant stained-glass front door, you'll be greeted by a warm and welcoming atmosphere, with a spacious living room that provides a peaceful retreat for family relaxation. Large windows allow natural light to cascade in, highlighting the plush carpeting and tasteful decor.

The heart of the home is the open-plan kitchen and family/dining. The kitchen is practical with room for a small table, making it the perfect spot for morning breakfasts or evening



Disclaimer: All information contained therein is gathered from relevant third parties sources. We cannot guarantee or give any warranty about the information provided. Interested parties must rely solely on their own enquiries.

3

1

3

For Sale

Offers Over \$570,000

View

ljhooker.com.au/5WY5FCS

Contact

Alison Rogers

0409 220 211

arogers@ljhookerpinnacle.com

Scott Haas

0499 528 088

shaas@ljhookerpinnacle.com

LJ Hooker Pinnacle Property
(03) 6272 8177

homework sessions. The adjoining dining/family room, with its large windows and elegant light fixtures, provides an ideal setting for family meals and gatherings.

Each of the bedrooms is thoughtfully laid out to ensure privacy and comfort, with the master bedroom enjoying large windows and a sliding glass door, that frame the picturesque garden views. The third bedroom is currently being used as a second living space and could easily be reconverted with some modifications. There is a powder room in one of the bedrooms. The family bathroom is well-appointed with a shower, vanity, and beautiful stained-glass window, adding a touch of character to the space.

Outside, the property shines with a beautifully landscaped garden, complete with a variety of mature plants and a lush lawn area where children can play freely. The courtyard and outdoor entertaining areas invite you to host barbecues and enjoy al fresco dining amidst the tranquil surroundings. A handy studio provides an extra space for the artist, hobbyist or kids retreat. There is ample storage for garden tools and equipment in the shed.

This property is not just a house; it's a home where memories are waiting to be made. With its spacious interiors, enchanting gardens, and family-focused amenities, it offers an idyllic lifestyle for those looking to plant their roots in a friendly community.

Don't miss the chance to make this New Norfolk gem your own. Contact us today to arrange a viewing and take the first step towards your new family home.

The information contained herein has been supplied to us and we have no reason to doubt its accuracy, however, cannot guarantee it. Accordingly, all interested parties should make their own enquiries to verify this information.

More About this Property

Property ID	5WY5FCS
Property Type	House
House Size	109 m ²
Land Area	1446 m ²
Including	Ensuite Air Conditioning Toilets (3) Courtyard Deck Outdoor Entertaining Workshop Built-in-Robes Secure Parking Fully Fenced

Alison Rogers 0409 220 211

Pinnacle Partner | Property Representative | arogers@ljhookerpinnacle.com

Scott Haas 0499 528 088

Sales Associate to Alison Rogers | shaas@ljhookerpinnacle.com

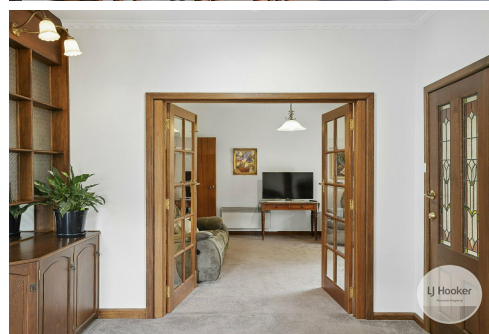
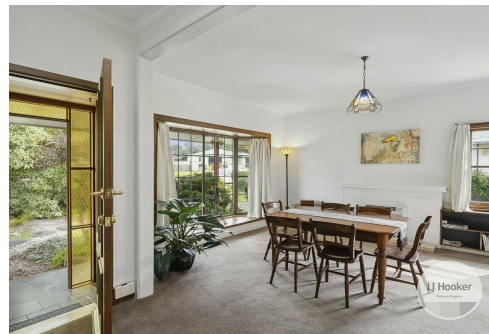
LJ Hooker Pinnacle Property (03) 6272 8177

402 Main Road, GLENORCHY TAS 7010

pinnacleproperty.ljhooker.com.au | hello@ljhookerpinnacle.com



Disclaimer: All information contained therein is gathered from relevant third parties sources. We cannot guarantee or give any warranty about the information provided. Interested parties must rely solely on their own enquiries.



LJ Hooker Pinnacle Property
(03) 6272 8177



Total Approx. House Area : 115 sqm
Total Approx. Outbuilding Area : 55 sqm

All measurements are internal and approximate.
This plan is a sketch for illustration, not valuation.
Produced by Open2view.com