

New Norfolk, 49 Gateway Drive

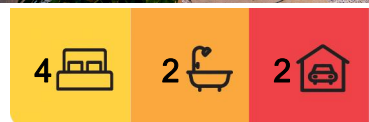
Exuding Elegance and Style!

We are delighted to present this exceptional four-bedroom, two-bathroom residence situated in the tranquil suburb of New Norfolk. This property is an entertainer's dream, offering designer outdoor spaces designed to deliver a lifestyle of comfort and enjoyment.

Entering the home, through stunning double timber doors, you instantly feel at home. The open-plan living space exudes a contemporary charm, seamlessly blending functionality and style. A modern kitchen, featuring elegant stone benchtops, and high-quality appliances, including a pyrolytic oven and induction cooktop. This space serves as the focal point and is complemented by dazzling pendant light fixtures that add a vibrant touch. Timber accents warm the space, creating a cosy atmosphere that invites relaxation. An abundance of natural light floods the room, accentuating its airy feel and highlighting the gorgeous views of the courtyard, which provides a serene backdrop for both daily living and entertaining. A well-appointed study also forms part of this impressive layout, providing a quiet space for work or study at home.



Disclaimer: All information contained therein is gathered from relevant third parties sources. We cannot guarantee or give any warranty about the information provided. Interested parties must rely solely on their own enquiries.



For Sale
Please Call

View
ljhooker.com.au/5X05FCS

Contact
Jeff Hamilton
0404 888 538
jhamilton@ljhookerpinnacle.com
Bree Harrison
0400 770 514
bharrison@ljhookerpinnacle.com

LJ Hooker Pinnacle Property
(03) 6272 8177

The master bedroom boasts a private ensuite, offering a sanctuary for the homeowners, and is conveniently tucked away at the back of the home. Here you can enjoy your own retreat or open the glass sliding doors that travel through to the manicured yard and open the space even more. The home provides ample space with three more generously sized bedrooms, all fitted with built-in robes. These rooms are serviced by the main bathroom, which boasts elegance and style. This space offers warm tones and an inviting ambiance, it is the perfect sanctuary for unwinding with a bubble bath after a long day.

Outside, the home features an inviting courtyard that is perfect for alfresco dining, surrounded by a beautifully maintained garden, offering an idyllic setting for entertaining friends and family. The designer backyard is a tranquil oasis, with wisteria gracefully climbing the pergola. A soothing water feature complements the meticulously manicured landscaping, enhancing the serene atmosphere for relaxation and enjoyment.

Located in the serene suburb of New Norfolk, this home offers the perfect balance of suburban living while being just a short drive from local amenities. Enjoy the peace and tranquillity of the area, with the convenience of easy access to shops, schools, and public transport. This property is more than just a home; it's an entertainer's dream and a family haven. Don't miss this opportunity to secure a property that offers a lifestyle of comfort and convenience, with a focus on outdoor living.

The information contained herein has been supplied to us and we have no reason to doubt its accuracy, however, cannot guarantee it. Accordingly, all interested parties should make their own enquiries to verify this information.

More About this Property

Property ID	5X05FCS
Property Type	House
House Size	137 m ²
Land Area	721 m ²
Including	Ensuite Study Air Conditioning Courtyard Dishwasher Outdoor Entertaining Built-in-Robes Secure Parking Fully Fenced Remote Garage

Jeff Hamilton 0404 888 538

Property Representative | jhamilton@ljhookerpinnacle.com

Bree Harrisson 0400 770 514

Executive Assistant to Jeff Hamilton | bharrisson@ljhookerpinnacle.com

LJ Hooker Pinnacle Property (03) 6272 8177

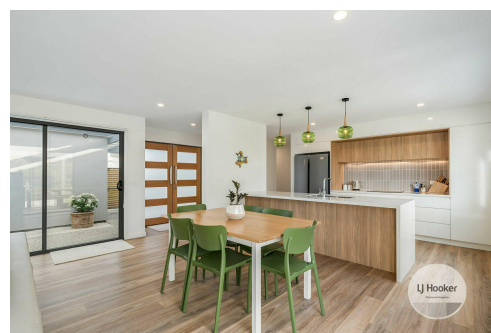
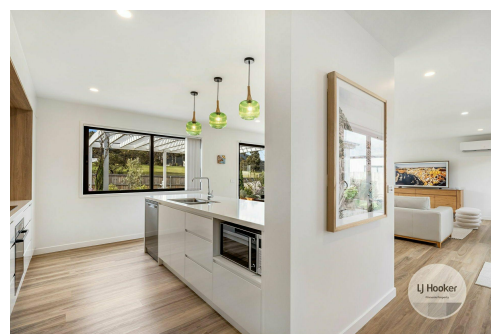
402 Main Road, GLENORCHY TAS 7010

pinnacleproperty.ljhooker.com.au | hello@ljhookerpinnacle.com

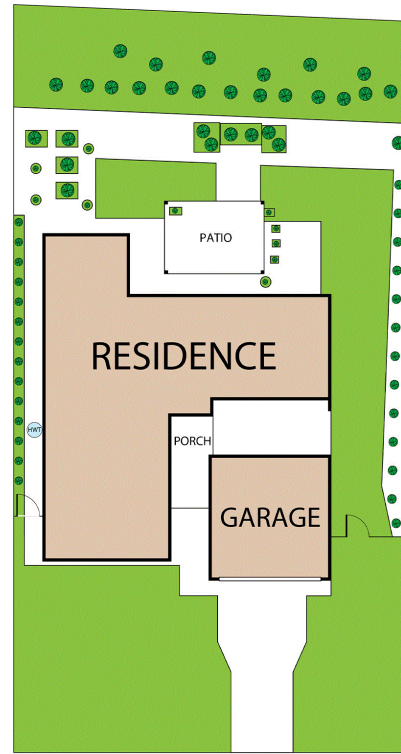


Disclaimer: All information contained therein is gathered from relevant third parties sources.

We cannot guarantee or give any warranty about the information provided. Interested parties must rely solely on their own enquiries.



LJ Hooker Pinnacle Property
(03) 6272 8177



49 Gateway Drive, New Norfolk

House area: 137 sqm

Areas and dimensions are approximate and therefore this floor plan should only be used for illustrative purposes.

Real Estate Marketing by nextcreative.com.au

House Area: 137 sqm

Garage: 38 sqm

Total Usable Area: 175 sqm



LJ Hooker Pinnacle Property
(03) 6272 8177

Disclaimer: All information contained therein is gathered from relevant third parties sources. We cannot guarantee or give any warranty about the information provided. Interested parties must rely solely on their own enquiries.