

New Norfolk, 22 Southview Crescent

Charming Home Bursting with Potential!

Nestled in the heart of picturesque New Norfolk, 22 Southview Crescent offers a wonderful opportunity for first home buyers, downsizers, or savvy investors. This classic weatherboard home is set on a generous block and filled with character, ready for you to move in or make your mark.

Step inside to find a light-filled living room with large windows, a cozy feature fireplace turned heater, with neutral tones that create a welcoming atmosphere. The retro-style kitchen and dining area is packed with charm, boasting plenty of storage, ample bench space, and delightful natural light – perfect for casual family meals or entertaining friends.

The home is comfortable as is but offers exciting potential for upgrades or a stylish renovation to really make it your own. Outside, the fully fenced yard is ideal for children and pets, with low-maintenance gardens and a leafy backdrop providing peace and



For Sale
Please Call

View
ljhooker.com.au/5XHAFCS

Contact
Jeff Hamilton
0404 888 538
jhamilton@ljhookerpinnacle.com
Bree Harrison
0400 770 514
bharrison@ljhookerpinnacle.com



Disclaimer: All information contained therein is gathered from relevant third parties sources. We cannot guarantee or give any warranty about the information provided. Interested parties must rely solely on their own enquiries.

LJ Hooker Pinnacle Property Rentals
(03) 6272 8177

privacy.

New Norfolk is celebrated for its friendly community atmosphere and beautiful natural surroundings. Enjoy nearby parks, walking trails, and the picturesque Derwent River. Plus, local shops and cafes are just minutes away, providing everything you need for daily conveniences. This charming suburb is not only rich in history but also offers a peaceful lifestyle while being close to Hobart. It's a great location for families, retirees, or anyone looking for a tranquil escape.

Key Features:

- Solid 3-bedroom weatherboard home
- Sunny living room with feature fireplace
- Retro-style kitchen and dining space
- Great-sized yard with established gardens
- Peaceful location close to all amenities

Don't miss this opportunity to secure your home in a great area. Contact us today to arrange a viewing and experience the warmth and potential of this lovely property!

The information contained herein has been supplied to us and we have no reason to doubt its accuracy, however, cannot guarantee it. Accordingly, all interested parties should make their own enquiries to verify this information. Digital styling has been utilized.

More About this Property

Property ID	5XHAFCS
Property Type	House
House Size	109 m2
Land Area	811 m2
Including	Air Conditioning Floorboards Workshop Secure Parking Fully Fenced

Jeff Hamilton 0404 888 538

Property Representative | jhamilton@ljhookerpinnacle.com

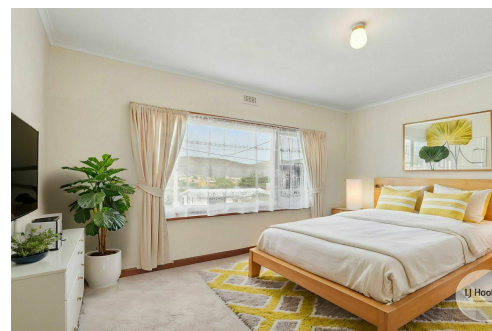
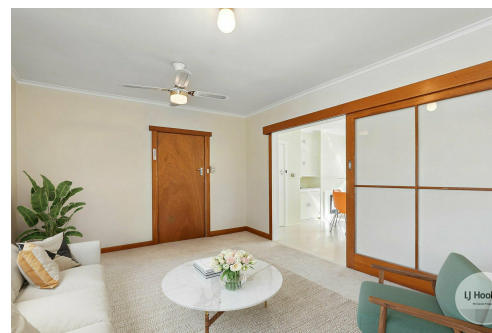
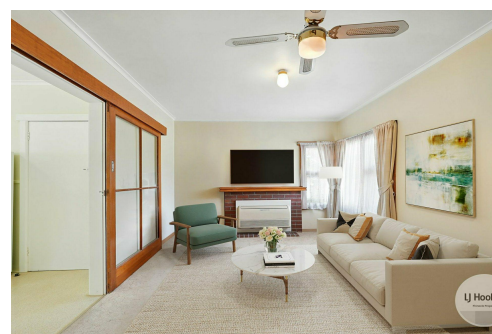
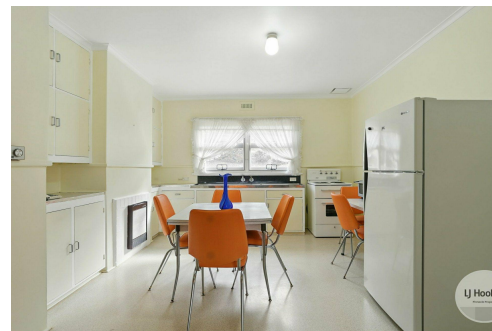
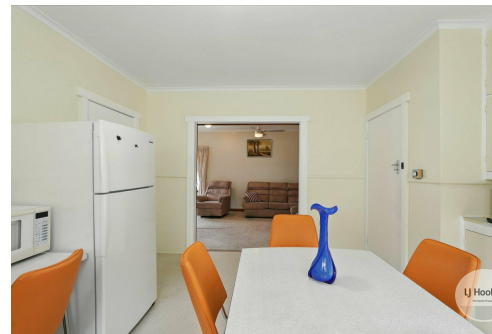
Bree Harrisson 0400 770 514

Executive Assistant to Jeff Hamilton | bharrisson@ljhookerpinnacle.com

LJ Hooker Pinnacle Property Rentals (03) 6272 8177

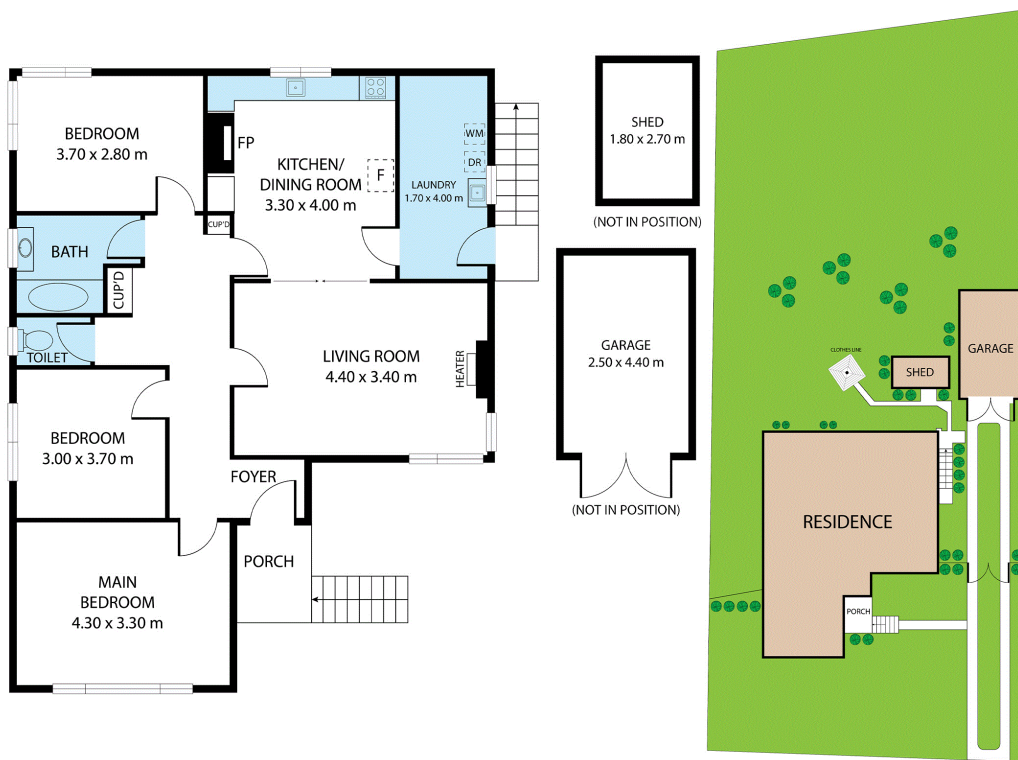
122 Murray Street, HOBART TAS 7000

pinnacleproperty.ljhooker.com.au | hello@ljhookerpinnacle.com



Disclaimer: All information contained therein is gathered from relevant third parties sources. We cannot guarantee or give any warranty about the information provided. Interested parties must rely solely on their own enquiries.

**LJ Hooker Pinnacle Property Rentals
(03) 6272 8177**



22 Southview Crescent, New Norfolk

House area: 109 sqm

Areas and dimensions are approximate and therefore this floor plan should only be used for illustrative purposes.

Real Estate Marketing by nextcreative.com.au

House Area: 109 sqm

Garage: 11 sqm

Shed: 5 sqm

Total Usable Area: 125 sqm



LJ Hooker Pinnacle Property Rentals
(03) 6272 8177

Disclaimer: All information contained therein is gathered from relevant third parties sources. We cannot guarantee or give any warranty about the information provided. Interested parties must rely solely on their own enquiries.