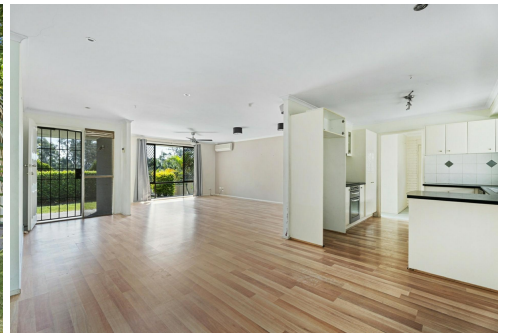




SOLD



Nerang, 7 Mango Court

Renovators Delight

This home requires a good paint inside and out, it's been 10 years since it has had a spruce up.

Perfect for those warm summer days and nights and with an elevated and private cul de sac position, this 3 bedroom plus family home is walking distance to many facilities. Entertaining is a breeze with a covered outdoor alfresco area situated beside the sparkling in ground pool. Internal living boasts an open plan design with a decent sized kitchen complete with plenty of storage and bench space. 3 good sized bedrooms plus a clever garage conversion providing the 4th bedroom or rumpus with its own access.

Features include:

- 4 decent sized bedrooms, 1 bathroom with separate vanity and toilet
- Kitchen with dishwasher, good bench space and storage
- Spacious open plan living and dining



Disclaimer: All information contained therein is gathered from relevant third parties sources. We cannot guarantee or give any warranty about the information provided. Interested parties must rely solely on their own enquiries.

4 

1 

2 

For Sale

Offers Over \$799,000

View

ljhooker.com.au/5G3GF41

Contact

Alexander Bally

0410 650 470

abally@ljhgc.com.au

LJ Hooker Nerang
(07) 5581 4422

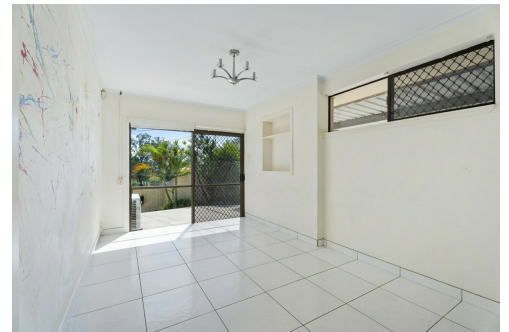
Undercover outdoor entertainment area
Airconditioned and ceiling fans
Double carport plus space for extra off street parking
In ground pool
Separate laundry
Garden shed
751m2 fully fenced and landscaped block

More About this Property

Property ID	5G3GF41
Property Type	House
Land Area	751 m ²

Alexander Bally 0410 650 470
Sales Specialist | abally@ljhgc.com.au

LJ Hooker Nerang (07) 5581 4422
2-4 New Street, NERANG QLD 4211
nerang.ljhooker.com.au | nerang@ljhgc.com.au



LJ Hooker Nerang
(07) 5581 4422

Disclaimer: All information contained therein is gathered from relevant third parties sources.
We cannot guarantee or give any warranty about the information provided. Interested parties must rely solely on their own enquiries.



7 MANGO COURT, NERANG

4 1 2

Internal: 126m² | External: 93m² | Total: 219m²

Whilst every attempt has been made to ensure the accuracy of the floor plan contained here, measurements of doors, windows, rooms and any other item are approximate and no responsibility is taken for any error, omission, or misstatement. This plan is for illustrative purposes only and should only be used as such by any prospective purchaser.

