


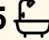

5 The Maples, Narre Warren

## Rare Architectural Brilliance and Unmatched Luxury & Family Versatility in Narre Warren

Showcasing striking architectural form, soaring proportions and luxurious family versatility, this exceptional six bedroom residence delivers a rare opportunity to secure premium living on a superb 850sqm (approx.) allotment in a tightly held Narre Warren pocket. Designed for multi generational comfort, lifestyle entertaining and everyday ease, it offers an uncompromising level of space both inside and out.

A dramatic facade sets the tone, opening to a double height void and spectacular ceiling heights of approximately 3.7 metres on the ground floor and 5.4 metres upstairs creating a breathtaking sense of scale rarely achieved in residential design. Premium engineered timber flooring, plush soft pile carpets and statement chandeliers enrich every space with warmth and sophistication.

The ground floor provides outstanding flexibility with a private master suite, home office/study, formal dining and multiple living zones ideal for hosting guests. Zoned digital climate panels ensure year round comfort, complemented by a secure video intercom system and

6  5  4 

**FOR SALE**  
\$2,200,000 - \$2,400,000

**VIEW**  
By Appointment

**AGENTS**  
Rohullah Paykari  
0423 649 553  
rpaykari.dandenong@ljhooker.com.au

Muntazir Hussaini  
0412 097 072  
mhussaini.dcb@ljhooker.com.au

**AGENCY**  
LJ Hooker Dandenong City | Berwick  
(03) 9877 9750

All information contained therein is gathered from relevant third parties sources.  
We cannot guarantee or give any warranty about the information provided.  
Interested parties must rely solely on their own enquiries.

 **LJ Hooker**

CCTV cameras for peace of mind.

The central family and meals hub is bathed in natural light, anchored by a superbly appointed kitchen with stone surfaces, abundant storage, commercial grade appliances and an adjoining second kitchen perfect for seamless entertaining. Sliding doors open to a vast outdoor pavilion for effortless alfresco dining and summer enjoyment.

Upstairs, a spacious living retreat offers versatility for teenagers or extended family. Two additional master bedrooms each feature their own walk in robe and private ensuite, ensuring privacy and independence for every generation. A rear decking terrace captures leafy elevated views, enhancing the home's openness and lifestyle appeal.

Beautifully landscaped grounds wrap the residence, complemented by double glazed windows, a secure gated entry and a double garage with internal access.

**Highlights:**

Expansive 850sqm (approx.) allotment  
Three luxurious master suites (WIR + ensuite) across both levels  
Six bedrooms + dedicated home office/study  
Five bathrooms / multiple living zones  
Theatre room  
Two designer kitchens with stone finishes and commercial grade appliances  
Spectacular 3.7 m & 5.4 m ceiling heights  
Premium timber flooring & soft pile carpets  
Statement pendant chandeliers  
CCTV security and video intercom system  
Double glazed windows & zoned climate control

Outdoor pavilion + elevated decking terrace Gated entry & double garage with internal access Perfectly positioned near quality schools, parklands, bus routes, Westfield Fountain Gate and freeway access, this residence defines grandeur, comfort and contemporary family living.

Homes of this calibre are not simply lived in they are experienced.

**Disclaimer:**

Every reasonable effort has been made to ensure the accuracy of the information provided; however, neither the vendor, agent, nor agency makes any representation or warranty as to its completeness or correctness. The floor plans provided are for illustrative purposes only and should be treated as such. No liability is accepted for any inaccuracies or omissions in the details or dimensions represented. As the property may be subject to private inspections, the sale status could change prior to scheduled Open Homes. Prospective buyers are advised to verify the current availability of the property before attending any inspection.

## MORE DETAILS

Property ID                   A1YHWR  
Property Type               House  
Land Area                    850 m2

### **Rohullah Paykari 0423 649 553**

Owner/ Principal | [rpaykari.dandenong@ljhooker.com.au](mailto:rpaykari.dandenong@ljhooker.com.au)

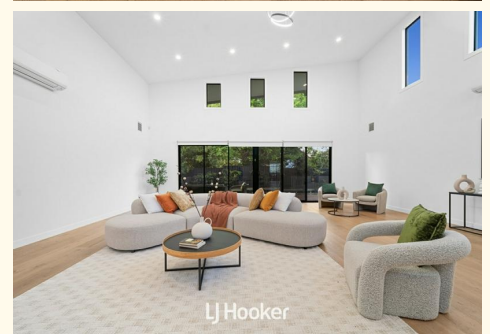
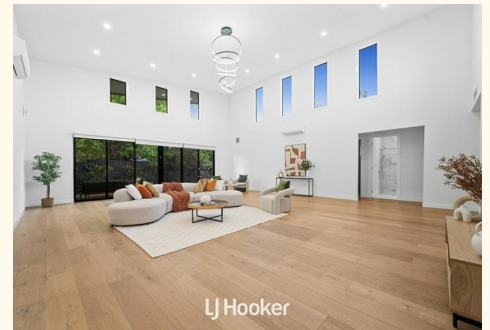
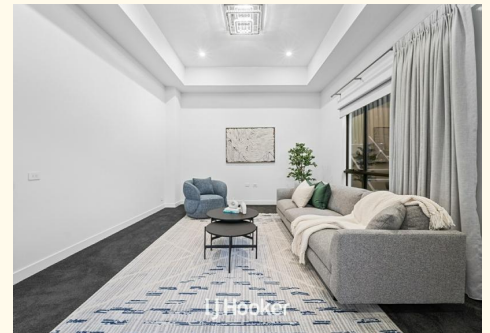
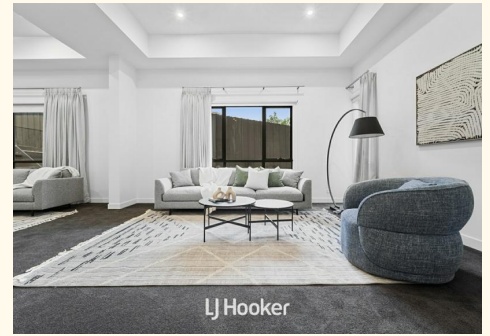
### **Muntazir Hussaini 0412 097 072**

Sales Specialist | [mhussaini.dcb@ljhooker.com.au](mailto:mhussaini.dcb@ljhooker.com.au)

### **LJ Hooker Dandenong City | Berwick (03) 9877 9750**

172 Foster Street, DANDENONG VIC 3175

[dandenong.ljhooker.com.au](http://dandenong.ljhooker.com.au) | [dandenong@ljhooker.com.au](mailto:dandenong@ljhooker.com.au)



Ground Floor



First Floor



LJ Hooker



5 The Maples, Narre Warren

\* Dimensions are approximate and for illustrative purposes only

All information contained therein is gathered from relevant third parties sources. We cannot guarantee or give any warranty about the information provided. Interested parties must rely solely on their own enquiries.

