



23 Geoffrey Court, Narre Warren

Immaculate Family Entertainer in a Quiet Court Location

Nestled in a quiet court in the heart of Narre Warren, this beautifully presented and immaculately maintained family home offers the perfect blend of space, comfort and lifestyle for the growing family. Positioned within close proximity to quality schools, shopping centres, public transport and beautiful parks for the kids to enjoy, this is a home that truly ticks every box.

From the moment you step inside, you will immediately appreciate the spacious design and warm family feel. Boasting three separate living areas, this home has been thoughtfully designed to accommodate large families who love both entertaining and everyday comfort.

As you enter the home, you are greeted by a huge formal lounge and dining area, offering the perfect setting to entertain guests or simply relax in style. Flowing through the home is the spacious family meals area which is perfectly positioned alongside the large hostess kitchen. Featuring a dishwasher, heaps of cupboard space, ample bench space and quality appliances, the kitchen is truly the heart of the home and overlooks the separate rumpus room, allowing plenty of room for the whole family to spread out and enjoy.

4 2 2

FOR SALE
\$930,000 - \$970,000

VIEW
Sun 17th May @ 10:00AM - 10:15AM

AGENTS
John Deo
0411 873 123
john.deo@ljhc Casey.com.au

AGENCY
LJ Hooker Hampton Park
(03) 9702 8388

All information contained therein is gathered from relevant third parties sources. We cannot guarantee or give any warranty about the information provided. Interested parties must rely solely on their own enquiries.

LJ Hooker

Accommodation is exceptional with four large bedrooms on offer. The oversized master bedroom features a walk-in robe and full ensuite, creating the perfect parents retreat. The remaining three bedrooms are all generous in size, with two additional bedrooms also complete with walk-in robes, and are serviced by a central bathroom featuring a relaxing spa bath.

Packed with quality extras throughout, the home includes high 2.7 metre ceilings, ducted heating, refrigerated cooling, split system air conditioning, new ceiling fans, new blinds, roller shutters and stunning floorboards flowing throughout the home, adding both style and practicality.

Step outside and be impressed by the large decked pergola area, perfect for year-round entertaining with family and friends while overlooking the spacious backyard for the kids and pets to enjoy.

Completing this outstanding package is a remote double garage with rear access, immaculate presentation throughout and a fantastic family-friendly court location that offers peace, privacy and convenience.

Homes of this calibre, size and presentation are extremely hard to find, so don't miss your opportunity to secure this exceptional family home in one of Narre Warren's most sought-after locations.

Disclaimer: All information contained herein is gathered from sources we consider to be reliable. However, we cannot guarantee or give any warranty about the information provided, and interested parties must solely rely on their own enquiries.

MORE DETAILS

Property ID	47YX2FHE
Property Type	House
Land Area	563 m2
Including	Ducted Cooling
	Ducted Heating
	Dishwasher
	Built-in-Robes
	Close to Schools
	Close to shop
	Close to transport

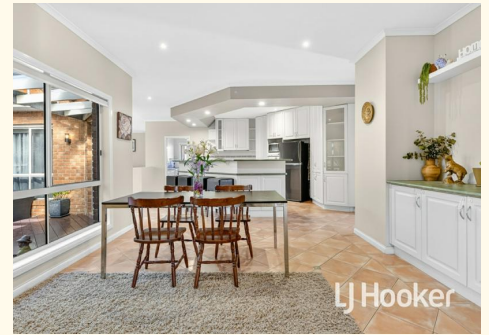
John Deo 0411 873 123

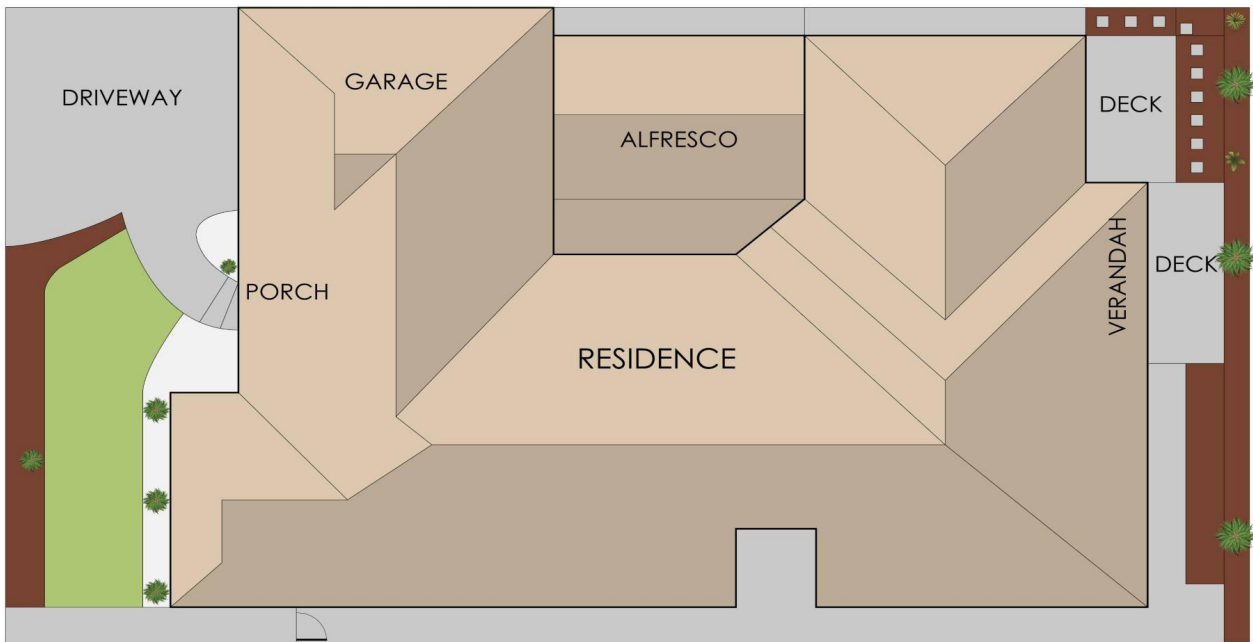
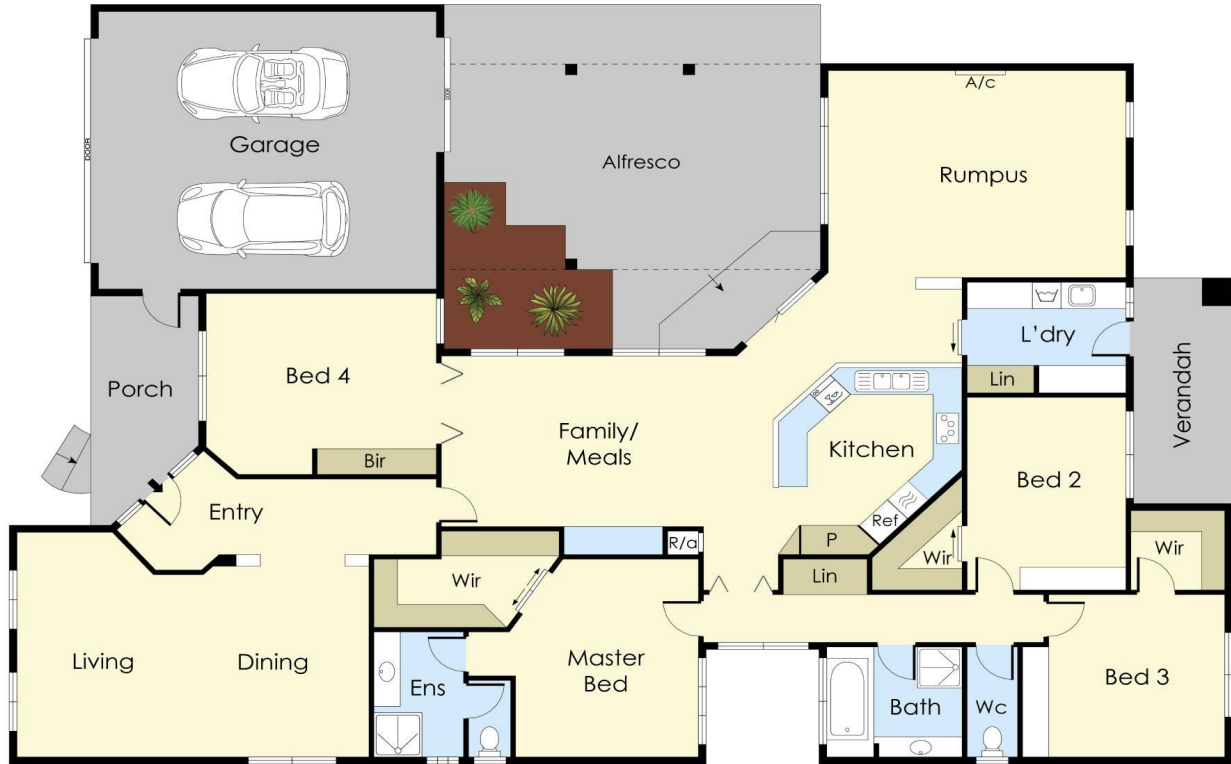
Director - Officer In Effective Control | john.deo@ljhcasey.com.au

LJ Hooker Hampton Park (03) 9702 8388

Shop 20, Hampton Park Shopping Centre, 166 Somerville Road,
HAMPTON PARK VIC 3976

hamptonpark.ljhooker.com.au | john.deo@ljhcasey.com.au





23 Geoffrey Court, Narre Warren

This floorplan is for illustration purposes only and no warranty is given to its accuracy. Purchasers are advised to carry out their own investigations.