



12 Yellowfin Close, Narooma

Brand New in Narooma

Introducing this new 3 bedroom, 2-bathroom home, located in the picturesque town of Narooma.

This brand new home offers the perfect blend of modern living, comfort, and coastal charm.

The property is ideal for a variety of people looking to escape to a tranquil, yet vibrant community.

This quality built home, nestled in the heart of Narooma, features an open plan dining and kitchen area that is filled with natural light. The seamless flow between the living space and the outdoor deck creates an emphasis on entertaining and alfresco dining perfect for the South Coast summer


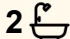
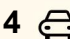
The master bedroom contains a spacious ensuite, with sliding doors out to the back deck, and all bedrooms feature built in wardrobes.

Bathrooms are finished with contemporary fixtures, and the kitchen with modern appliances.

This home would suit a new family, be perfect for retirees or something to add to your long term investment portfolio.

This is a quiet neighbourhood, within walking distance to shops, pristine beaches and the golf course.

Take the first steps to make this beautiful house your new home by calling Steve from LJHooker Narooma today.

3  2  4 

FOR SALE

\$895,000

AGENTS

Steven Hutcheson

0407 226 603

steven.hutcheson@ljhooker.com.au

AGENCY

LJ Hooker Narooma

(02) 4476 1000

All information contained therein is gathered from relevant third parties sources.
We cannot guarantee or give any warranty about the information provided.
Interested parties must rely solely on their own enquiries.

 **LJ Hooker**

MORE DETAILS

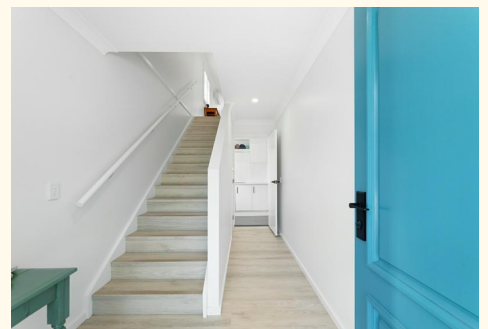
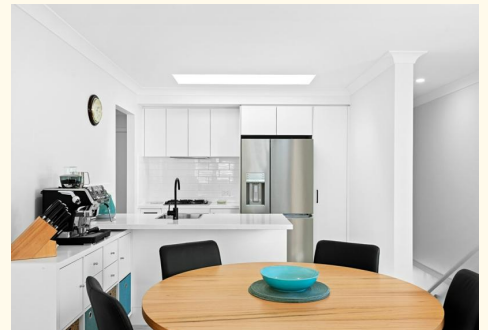
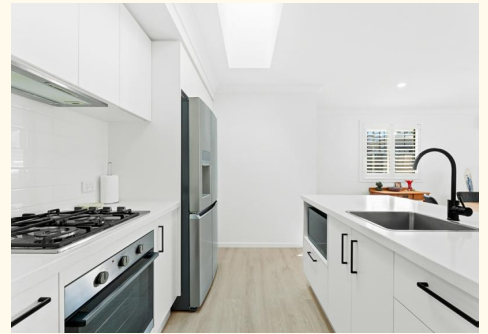
Property ID 3QTHMM
Property Type House
Land Area 516 m2
Including Ensuite
Toilets (2)

Steven Hutcheson 0407 226 603

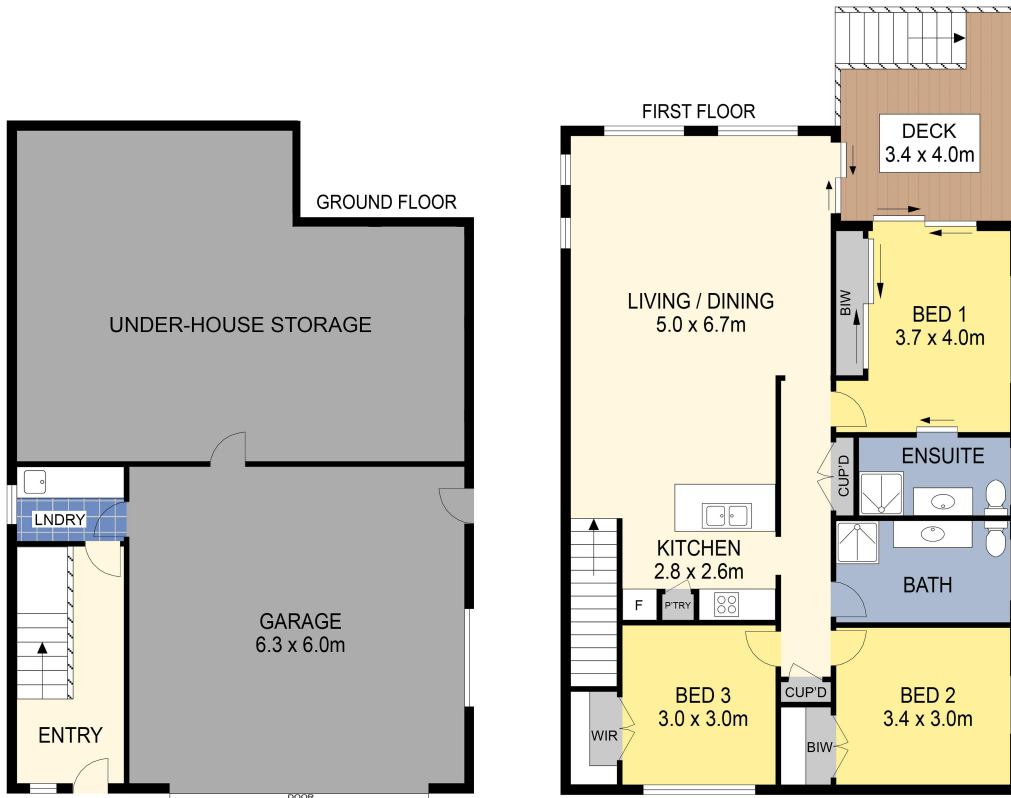
Licensed Real Estate Agent | steven.hutcheson@ljhooker.com.au

LJ Hooker Narooma (02) 4476 1000

Shop 6, 4 -6 Noorooma Crescent, NAROOMA NSW 2546
narooma.ljhooker.com.au | narooma@ljhooker.com.au



All information contained therein is gathered from relevant third parties sources.
We cannot guarantee or give any warranty about the information provided.
Interested parties must rely solely on their own enquiries.



PLANS SHOWN ONLY INDICATIVE OF LAYOUT. DIMENSIONS ARE APPROXIMATE.

12 Yellowfin Close, Narooma



All information contained therein is gathered from relevant third parties sources. We cannot guarantee or give any warranty about the information provided. Interested parties must rely solely on their own enquiries.

