






22 Narara Crescent, Narara

Quaint Cottage with Detached Studio, Room for Granny Flat (STCA)

Positioned in a central location on a 615sqm gently sloping parcel of land on the high side of the street presents an exciting opportunity for families, first home buyers, downsizers or investors alike with the balance of privacy & convenience.

- Freshly painted, as new floating flooring, neat & tidy
- Gently sloping 615sqm block on the high side of road
- Three generous bedrooms, two with built in robes & air conditioning
- Separate lounge & dining rooms with third split system air conditioner
- Updated kitchen with Miele dishwasher, brand new oven & range hood
- Covered front porch, single car garage with loads of storage
- Detached studio, great for a teenage retreat/home office etc
- Awesome backyard ideal for child's play & room to improve
- Great opportunity for granny flat potential (STCA)
- Short walk to Narara train station, bus stop & parklands
- Scope to add value & make your own, solid construction
- Short drive to local shopping, quality schools & waterfront

3  1  1 

FOR SALE
Contact Agent

AGENTS

Mark Whybrow
0412 994 707
mwhybrow.lisarow@ljhooker.com.au

AGENCY

LJ Hooker East Gosford
(02) 4322 5522

All information contained therein is gathered from relevant third parties sources.
We cannot guarantee or give any warranty about the information provided.
Interested parties must rely solely on their own enquiries.

 **LJ Hooker**

Council Rates: \$1,634.08pa approx.
Water Rates: \$1,185.08pa approx. + usage

MORE DETAILS

Property ID	86MGQR
Property Type	House
Land Area	615 m2
Including	Close to Schools Close to Shops Close to Transport

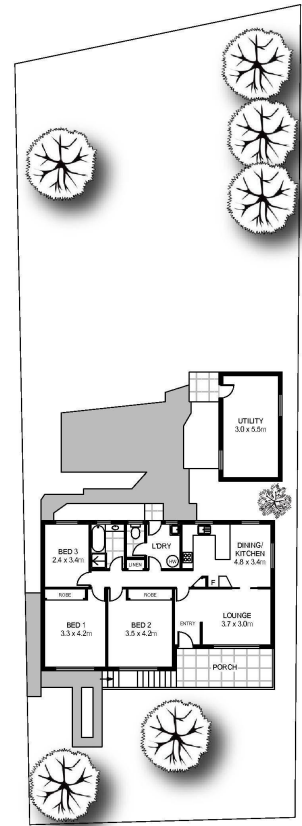
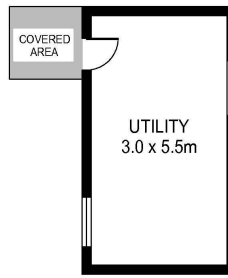
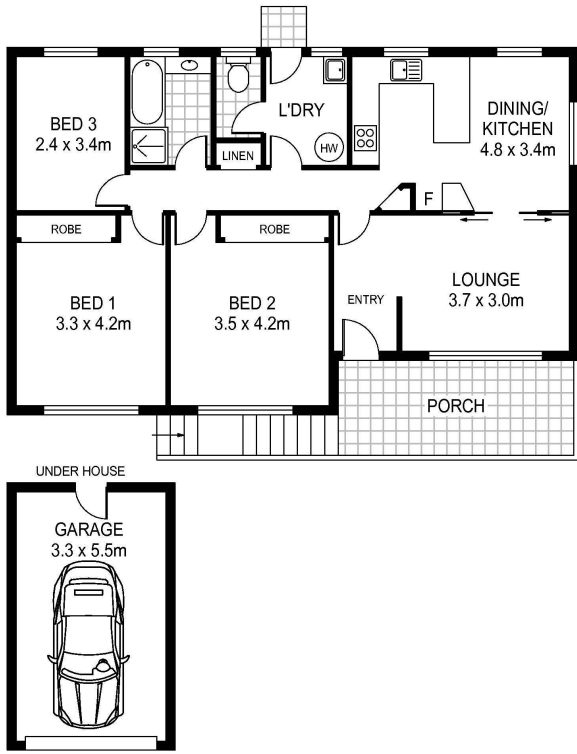
Mark Whybrow 0412 994 707

Licensed Real Estate Agent | Director Whybrow Real Estate Pty Ltd |
mwhybrow.lisarow@ljhooker.com.au

LJ Hooker East Gosford (02) 4322 5522

Suite 5 & 6 Victoria Court, 36-40 Victoria Street, EAST GOSFORD
NSW 2250
eastgosford.ljhooker.com.au | eastgosford@ljhooker.com.au





Scale in metres. Indicative only. Dimensions are approximate. All information contained herein is gathered from sources we believe to be reliable. However we cannot guarantee its accuracy and interested persons should rely on their own enquiries.

22 Narara Crescent, Narara



All information contained therein is gathered from relevant third parties sources. We cannot guarantee or give any warranty about the information provided. Interested parties must rely solely on their own enquiries.

