

## Nairne, 1/14a Haeusler Drive

Perfect First Home or The Ideal Investment!

Nestled in the charming suburb of Nairne, this property offers an incredible lifestyle and is perfect for any situation - whether you're a savvy investor, a downsizer, or a first-home buyer looking to enter the market!

This property is currently tenanted on a fixed term lease for \$350 per week until 14th July 2025.

Features you'll love:

- \* Three bedrooms
- \* Spacious living area and dining
- \* Central kitchen with ample storage and electric cooktop and breakfast bar
- \* Single garage with internal access
- \* Split system heating and cooling in living area for year-round comfort
- \* Bathroom with separate toilet



**Disclaimer:** All information contained therein is gathered from relevant third parties sources. We cannot guarantee or give any warranty about the information provided. Interested parties must rely solely on their own enquiries.



**For Sale**  
\$539,000 - \$579,000

**View**  
[ljhooker.com.au/2BGQGJU](http://ljhooker.com.au/2BGQGJU)

**Contact**  
**Ryan Graham**  
0400 912 287  
[ryang@ljhsales.com.au](mailto:ryang@ljhsales.com.au)

**LJ Hooker Greenwith | Golden Grove  
| Mawson Lakes | Modbury  
(08) 8289 6660**

\* Fully fenced rear yard

Whether you're just starting out, settling down, or looking to invest in this popular location, this property could be the perfect fit for you.

Make sure you don't miss your opportunity to secure this gem Register your interest with Ryan Graham today!

All information provided has been obtained from sources we believe to be accurate, however, we cannot guarantee the information is accurate and we accept no liability for any errors or omissions (including but not limited to a property's land size, floor plans and size, building age and condition). Interested parties should make their own enquiries and obtain their own legal and financial advice. Should this property be scheduled for auction, the Vendor's Statement may be inspected at either of our two LJ Hooker Property Specialists Real Estate offices for 3 consecutive business days immediately preceding the auction and at the auction for 30 minutes before it starts.

RLA 208516

## More About this Property

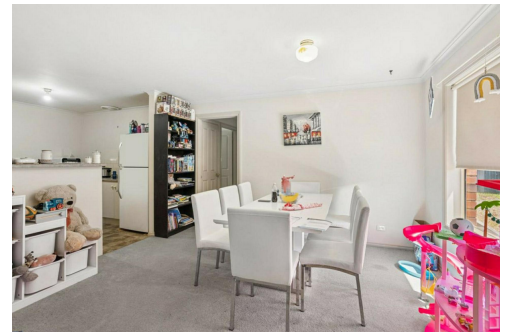
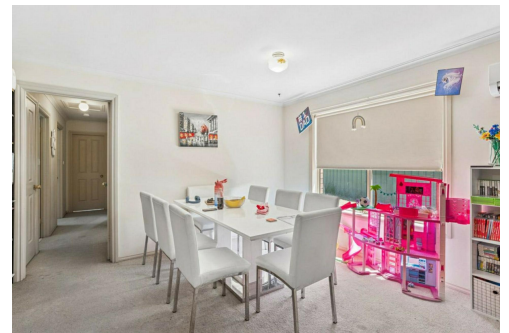
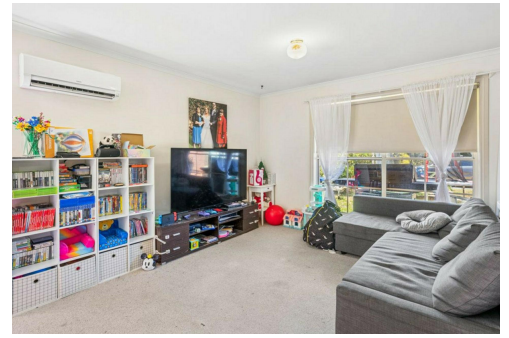
Property ID	2BGQGJU
Property Type	Unit
House Size	100 m2
Land Area	438 m2

**Ryan Graham 0400 912 287**

Sales Specialist | [ryang@ljhsales.com.au](mailto:ryang@ljhsales.com.au)

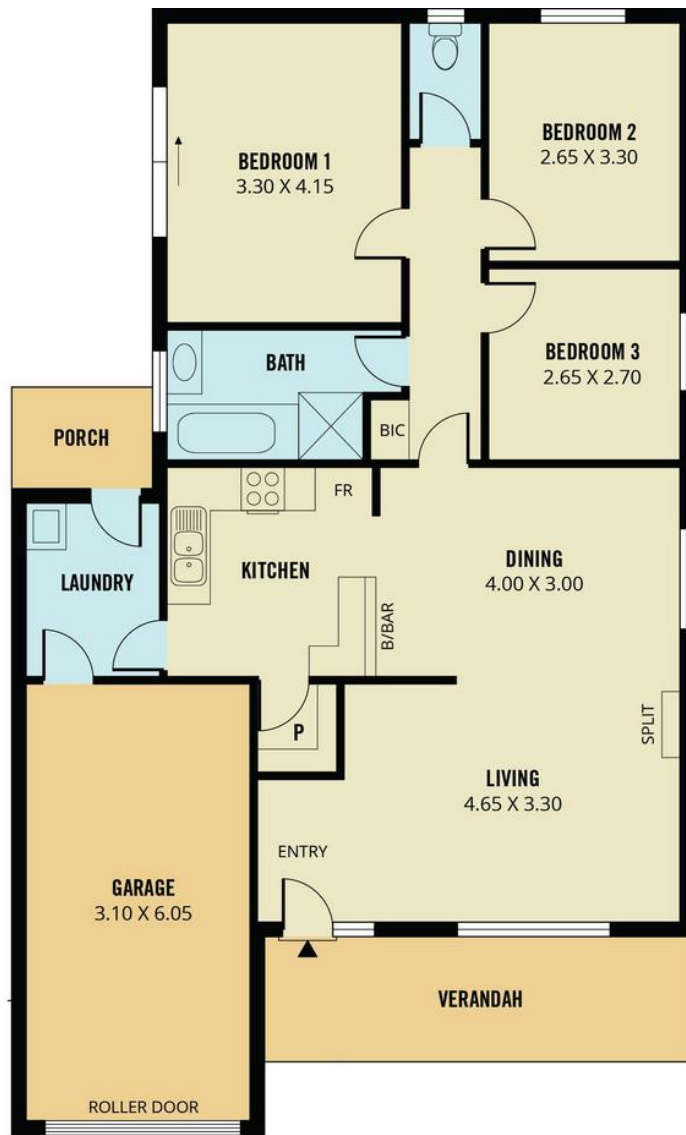
**LJ Hooker Greenwith | Golden Grove | Mawson Lakes | Modbury (08) 8289 6660**

North East, Shop 2, 1007 North East Road, RIDGEHAVEN SA 5097  
[greenwithgoldengrove.ljhooker.com.au](mailto:greenwithgoldengrove.ljhooker.com.au) | [info@ljhsupport.com.au](mailto:info@ljhsupport.com.au)



**Disclaimer:** All information contained therein is gathered from relevant third parties sources. We cannot guarantee or give any warranty about the information provided. Interested parties must rely solely on their own enquiries.

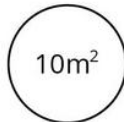
**LJ Hooker Greenwith | Golden Grove  
| Mawson Lakes | Modbury  
(08) 8289 6660**



**TOTAL**



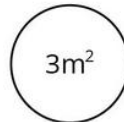
Living



Verandah



Garage



Porch

Scale in metres. This drawing is for illustration purposes only. All measurements are approximate and details intended to be relied upon should be independently verified.

Produced by **The Fotobase Group**