

Nairne, 68 Webber Drive

Stylish Family Living with Beautiful Hills Views

Perched on a generous 606sqm allotment, this spacious 4-bedroom family home offers the perfect blend of style, comfort, and functionality—designed for modern living and entertaining.

The large master suite, set apart from the other bedrooms and featuring his and her walk-in robes and a private ensuite. Bedrooms 2, 3 and 4 are all double sized rooms and come complete with built-in robes, serviced by a well-appointed 3-way main bathroom—ideal for busy households.

At the heart of the home, the open-plan kitchen, meals and living area invites relaxed family living and effortless entertaining. The kitchen boasts an island bench, dishwasher, and ample storage—perfectly positioned to take in the stunning elevated views over rolling hills.



For Sale
Please Call

View
ljhooker.com.au/14GSFDQ

Contact
Phil Chapman
0418 846 052
pchapman@ljhmtbarker.com.au

Anna Locke
0402 474 501
alocke@ljhmtbarker.com.au



LJ Hooker Mount Barker
(08) 8398 6300

Disclaimer: All information contained therein is gathered from relevant third parties sources. We cannot guarantee or give any warranty about the information provided. Interested parties must rely solely on their own enquiries.

Step outside to the undercover outdoor entertaining area, where you can unwind or host guests while soaking in the serene views.

Additional features include:

- Storage galore - including extra storage cupboards in the hallway, separate linen press, plus dual walk-in robes to main bedroom and built-in's to all other bedrooms
- Zoned ducted reverse cycle air-conditioning for year-round comfort
- Energy-efficient solar system
- Double garage with auto panel lift door and internal access
- Fully fenced rear yard
- Small garden shed tucked away down the side of the home
- Separately fenced off area with aviary, perfect for keeping chooks

Don't miss the opportunity to secure a beautifully designed family home in a peaceful, picturesque setting.

More About this Property

Property ID	14GSFDQ
Property Type	House
Land Area	606 m2
Including	Toilets (2)

Phil Chapman 0418 846 052

Principal | pchapman@ljhmtbarker.com.au

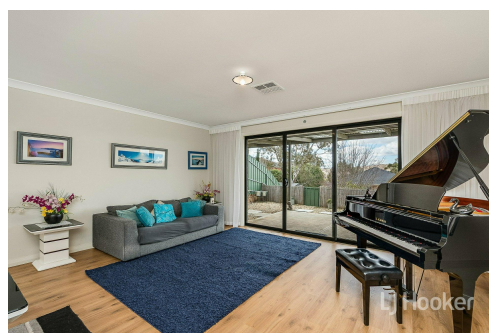
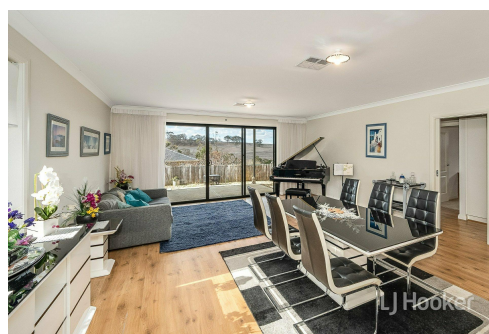
Anna Locke 0402 474 501

Sales Consultant | alocke@ljhmtbarker.com.au

LJ Hooker Mount Barker (08) 8398 6300

53 Gawler Street, MOUNT BARKER SA 5251

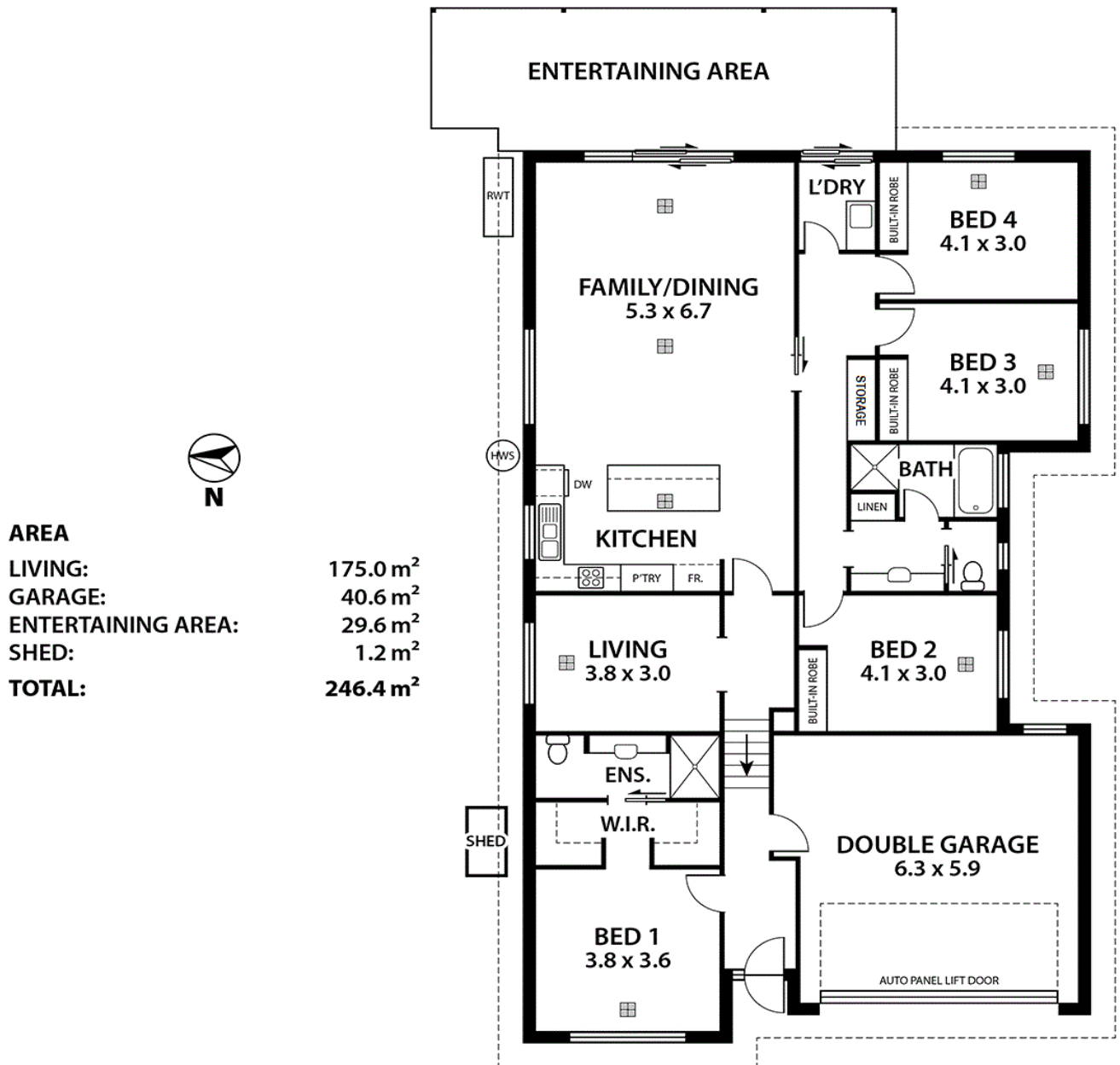
mountbarker.ljhooker.com.au | office@ljhmtbarker.com.au



Disclaimer: All information contained therein is gathered from relevant third parties sources. We cannot guarantee or give any warranty about the information provided. Interested parties must rely solely on their own enquiries.

**LJ Hooker Mount Barker
(08) 8398 6300**

RWT



This floorplan is for illustration purposes only and all measurements are approximate. Any information that is intended to be relied upon should be independently verified. Neither the agent or the illustrators take any responsibility for any omission, wrongful inclusion or typographical error which may occur in this drawing as it is intended as an artist's impression only. While every endeavour has been made to verify the correct details in this floor plan, neither the agent, vendor, nor illustrators accept any responsibility for any error or omission.