



20 Rewa Street, Musselburgh

Position is Everything!!!

Elevated to capture wide harbour views, this sun-filled site enjoys a clear, uninterrupted outlook across the water, with a natural sense of openness that's hard to come by.

Set in one of the area's most sought-after streets, the location is tightly held for good reason. Quiet, private, and well positioned, it offers a level of consistency and long-term appeal that's increasingly difficult to secure.

The existing home provides a solid starting point, with scope to renovate and add value. Alternatively, take advantage of the site and design a new home that fully maximises the elevation, sun, and view. There's genuine potential here to create something well above the ordinary.

A straightforward opportunity to secure a quality site in a proven location, with flexibility and upside in a blue-chip setting.

2 🏠 1 🚿 1 🚗

FOR SALE

Enquiries Over \$475,000

VIEW

Mon 27th Apr @ 11:30AM - 12:00PM

AGENTS

Amelia Hermens
022 415 2359
amelia@ljhdunedin.co.nz

Samantha Veint
021 0254 7472
samantha@ljhdunedin.co.nz

AGENCY

LJ Hooker Dunedin
(03) 470 1370
Wayne Graham Realty Ltd

All information contained therein is gathered from relevant third parties sources.
We cannot guarantee or give any warranty about the information provided.
Interested parties must rely solely on their own enquiries.

 LJ Hooker

MORE DETAILS

Property ID 3R3EGDS
Property Type House
Land Area 668 m²
Licensed Real Estate Agents (REAA2008)

Amelia Hermens 022 415 2359

Licensee | amelia@ljhdunedin.co.nz

Samantha Veint 021 0254 7472

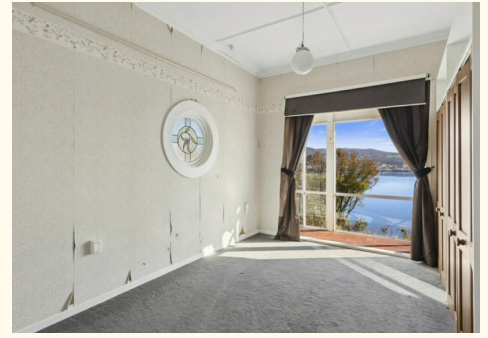
Licensee | samantha@ljhdunedin.co.nz

LJ Hooker Dunedin (03) 470 1370

Wayne Graham Realty Ltd

63 Musselburgh Rise, DUNEDIN 9013

dunedin.ljhooker.co.nz | dunedin@ljhdunedin.co.nz



All information contained therein is gathered from relevant third parties sources.
We cannot guarantee or give any warranty about the information provided.
Interested parties must rely solely on their own enquiries.