

Mount Warrigal, 409 Reddall parade

ANOTHER HOME SOLD BY CRAIG HYDE of L j Hooker

Another home SOLD by CRAIG HYDE of L j Hooker

Craig Hyde of L j Hooker Albion Park Rail, proudly offers for sale this Stunning Family Home in Mount Warrigal

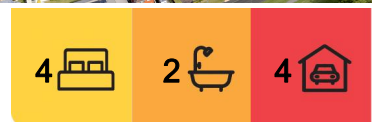
Welcome to 409 Reddall Parade, Mount Warrigal.

Nestled in the highly sought-after suburb of Mount Warrigal, this beautifully designed 4-bedroom residence is close to my heart and offers a perfect blend of comfort, style, and stunning natural beauty. With breathtaking water views and a sunny aspect, this property is a rare gem that promises to impress.

Property Features: 4 spacious bedrooms, each featuring built-in robes, providing ample storage and comfort for the whole family. Downstairs study or 5th bedroom/gaming room. 2



Disclaimer: All information contained therein is gathered from relevant third parties sources. We cannot guarantee or give any warranty about the information provided. Interested parties must rely solely on their own enquiries.



For Sale
Price Guide \$1,150,000-

View
ljhooker.com.au/MTCG55

Contact
Craig Hyde
0404 497 521
chyde.albionparkrail@ljhooker.com.au

LJ Hooker Albion Park Rail
(02) 4256 3344

bathrooms upstairs and down, designed for convenience and functionality. Double garage with internal access and secure parking, plus additional open parking spaces for guests. Generous 556.3 sqm lot, offering plenty of outdoor space for relaxation and entertainment or maybe even a pool in the future.

Interior Highlights: Step inside to discover a warm and inviting interior, featuring: - Air conditioning and gas heating for year-round comfort.- A formal living & Dining area that exudes elegance, perfect for entertaining guests. - A separate everyday dining room that flows seamlessly into the kitchen area. A spacious rear rumpus room, ideal for family gatherings or a playroom for the kids. - A dedicated study or 5th bedroom, perfect for those who work from home or need a quiet space for study.

Exterior Features: The outdoor space is equally impressive: - Fully fenced backyard, providing a safe haven for children and pets. - Beautifully landscaped garden, perfect for enjoying the outdoors. - A shed for additional storage or gardening tools. - Enjoy stunning lake views creating a serene backdrop for your daily life. Location = Situated in a prime location, this north-facing home offers not only picturesque water views but also easy access to local amenities, schools, parks, and public transport. Experience the best of coastal living while being just a short drive from the vibrant town center.

Don't miss the opportunity to own this exceptional property that combines modern living with natural beauty. Schedule a viewing today and make 409 Reddall Parade your new home!

For inquiries, please contact Craig Hyde direct on email: chyde.albionparkrail@ljhooker or 0404497521 today.

Shellharbour council \$2,469-06 PA and Water \$680-00 PA + usage

Your dream home awaits!



LJ Hooker Albion Park Rail
(02) 4256 3344

Disclaimer: All information contained therein is gathered from relevant third parties sources. We cannot guarantee or give any warranty about the information provided. Interested parties must rely solely on their own enquiries.

More About this Property

Property ID	MTCG55
Property Type	House
House Size	211 m2
Land Area	556.3 m2
Including	Study Air Conditioning Toilets (2) Built-in-Robes Secure Parking Fully Fenced Stunning lake views Sunny aspect Formal living areas Study or 5th Bedroom

Craig Hyde 0404 497 521

Director/Area Specialist | chide.albionparkrail@ljhooker.com.au

LJ Hooker Albion Park Rail (02) 4256 3344

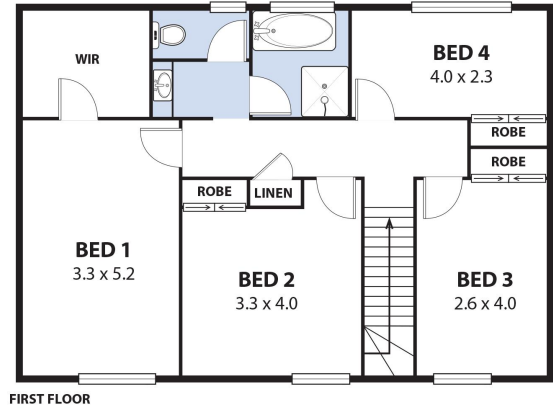
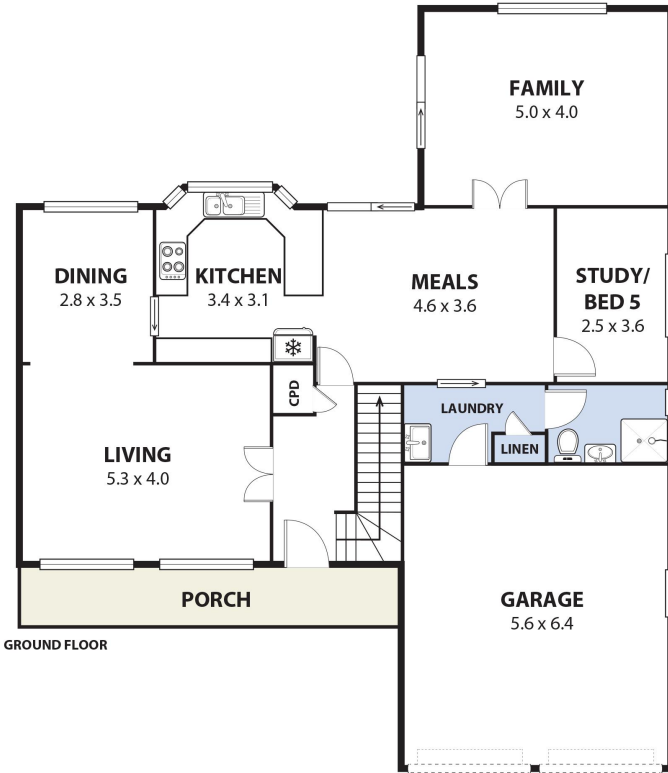
195A Princes Highway, ALBION PARK RAIL NSW 2527

albionparkrail.ljhooker.com.au | albionparkrail@ljhooker.com.au



**LJ Hooker Albion Park Rail
(02) 4256 3344**

Disclaimer: All information contained therein is gathered from relevant third parties sources. We cannot guarantee or give any warranty about the information provided. Interested parties must rely solely on their own enquiries.



409 REDDALL PDE, MT WARRIGAL
Internal Space 211m²



Plans shown are for presentation purposes and are not part of any legal document or title and are subject to errors, omissions, inaccuracies and should not be used as sole and accurate reference. Particulars given are for general information only and do not constitute any representation on the part of the vendor or agent. No liability will be accepted.

Louka
wearelouka.com



LJ Hooker Albion Park Rail
(02) 4256 3344

Disclaimer: All information contained therein is gathered from relevant third parties sources. We cannot guarantee or give any warranty about the information provided. Interested parties must rely solely on their own enquiries.