



9 Paisley Court, Mount Warren Park

Space, Comfort, Views & The Perfect Backyard


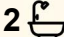

Welcome to 9 Paisley Court - a home that's all about practical living with a splash of charm. Tucked away in a quiet pocket of Mount Warren Park, this brick-and-tile beauty has everything you need for easy family living or a solid investment.

Step inside and you'll find a generous kitchen at the heart of the home - perfect for busy mornings or relaxed weekend cooking. With 3 bedrooms, 2 bathrooms and a double garage, there's plenty of space for everyone to spread out. The primary bedroom comes complete with its own ensuite, while the combination of carpet and vinyl floors makes cleaning a breeze. Add in security screens for peace of mind, and you've got a home that's as comfortable as it is convenient. Outside, the flat backyard is a standout - a safe, open space for kids and pets.

Features you'll love:

- 3 Bedrooms, 2 Bathrooms, 2 Car Garage - Room for the whole family.
- Generous Kitchen - Plenty of space to cook, entertain and create.
- Ensuite to Primary Bedroom - Privacy and convenience for the adults.

All information contained therein is gathered from relevant third parties sources. We cannot guarantee or give any warranty about the information provided. Interested parties must rely solely on their own enquiries.

3  2  2 

FOR SALE

Offers Over \$749,000

AGENTS

Adam Randell

0409 692 338

adam.randell@ljhbeenleigh.com.au

AGENCY

LJ Hooker Beenleigh

(07) 3807 7900

 **LJ Hooker**

- Carpet & Vinyl Flooring - Comfortable underfoot and easy to maintain.
- Flat Backyard - A rare find, perfect for kids, pets, or future plans.
- Brick & Tile Construction - Low maintenance and built to last.
- Security Screens - Enjoy cool breezes with peace of mind.

This home is move-in ready, packed with potential, and perfectly located close to schools, shops and transport.

9 Paisley Court isn't just a smart buy - it's the kind of home that makes life easy.

With Only One Thing Left To Do ... That Is... Beat The Crowds!!!

MORE DETAILS

Property ID	1WZ2GRF
Property Type	House
House Size	1054 m2
Land Area	1054 m2
Including	Outdoor Entertaining Built-in-Robes

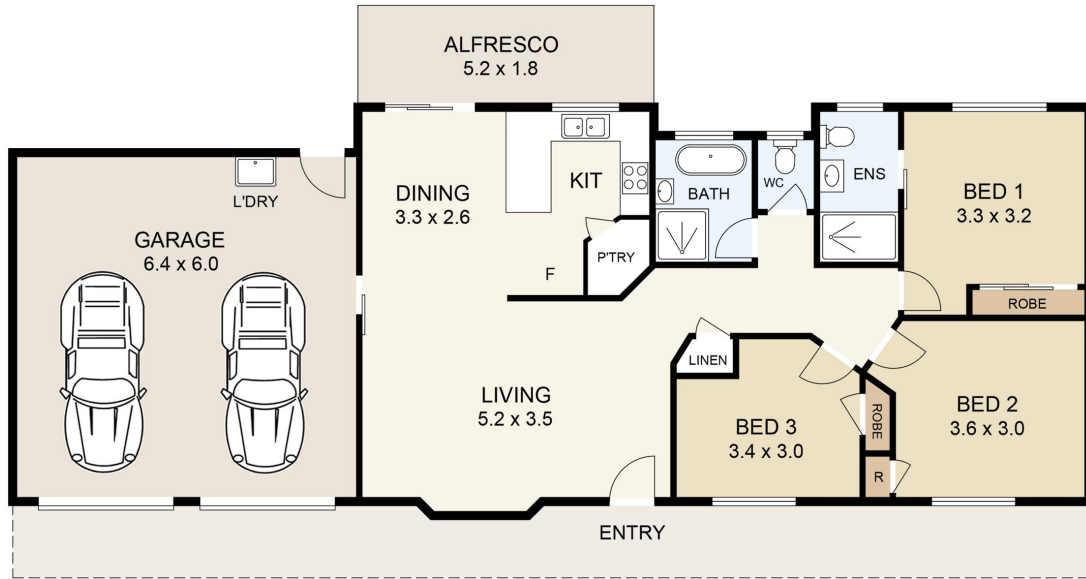
Adam Randell 0409 692 338

Sales Consultant | adam.randell@ljhbeenleigh.com.au

LJ Hooker Beenleigh (07) 3807 7900

14-16 James Street, BEENLEIGH QLD 4207
beenleigh.ljhooker.com.au | bso@ljhbeenleigh.com.au





Floor Plan

9 PAISLEY COURT



SCALE UNIT IS IN METRES

INTERNAL : 127m²
EXTERNAL : 9m²

All measurements are approximate and for illustration purposes only. It should not be considered 100% accurate. Interested parties should rely on their own enquiries.