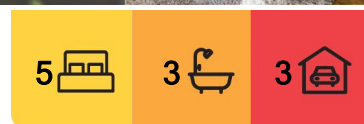


Mount Roskill, 409 Mount Albert Road

Spacious Family Masterpiece (Three King's Border)

Positioned proudly on the ridge with sweeping views north to the Sky Tower and west to the volcanic peaks, this recently built standalone family home offers a luxurious blend of space, style, and functionality. Designed with growing families in mind, the generous layout includes 5 bedrooms, 3 living areas, and 3 bathrooms, all complemented by double internal garaging and an additional off-street park. Crafted for comfort, the home features a ducted vacuum system, sound system, rainwater tanks for added efficiency and heat pumps ensures comfort year-round.

At the heart of the home is a sleek, gourmet kitchen with a separate scullery (2nd kitchen) complete with stylish cabinetry, generous stone bench tops, with direct access to the spacious family dining area. Step outside to a north-facing sunny garden, perfect for entertaining or soaking up the sun. Ideal for summer barbeques and relaxed gatherings. Upstairs, comfortable bedrooms await - including a master suite with a walk-in wardrobe and elegant ensuite - offering a tranquil retreat for every member of the family.



Auction

Wed 18th Jun @ 6:00PM

View

Sat 31st May @ 2:00PM - 2:45PM

Contact

Dee McDade

021 448 832

dmcdade.ponsonby@ljhooker.co.nz

Steven Glucina

021 888 455

sglucina.ponsonby@ljhooker.co.nz



Disclaimer: All information contained therein is gathered from relevant third parties sources.

We cannot guarantee or give any warranty about the information provided. Interested parties must rely solely on their own enquiries.

LJ Hooker Ponsonby

(09) 376 7530

Ponsonby Estate Agents Limited

Location is key, this home is ideally situated near the local Dominion Rd and Mount Eden shops and cafes, Royal Oak and St Lukes shopping centre, and public transport at the gate. Zoned for popular schools including Mt Roskill Grammar School, it's the perfect choice for families. Our overseas based owners give strict instructions to SELL to another loving family who will appreciate their dream home that they have built.

Open for inspections:

Saturday & Sunday, 2:00 - 2:30pm or by appointment.

Auction Wednesday 18 June 2025 at 6.00pm, In rooms 53 Ponsonby Road, Ponsonby.

More About this Property

Property ID	CY7GUK
Property Type	House
House Size	260 m2
Including	Toilets (3)
Licensed Real Estate Agents (REAA2008)	

Dee McDade 021 448 832

Salesperson | dmcdade.ponsonby@ljhooker.co.nz

Steven Glucina 021 888 455

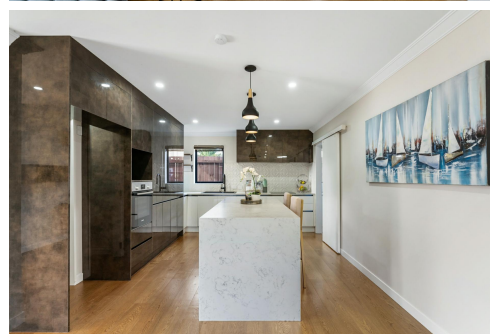
Principal Officer | sglucina.ponsonby@ljhooker.co.nz

LJ Hooker Ponsonby (09) 376 7530

Ponsonby Estate Agents Limited

53 Ponsonby Road, PONSONBY NZ 1011

ponsonby.ljhooker.co.nz | ponsonby@ljhooker.co.nz



Disclaimer: All information contained therein is gathered from relevant third parties sources.

We cannot guarantee or give any warranty about the information provided. Interested parties must rely solely on their own enquiries.

**LJ Hooker Ponsonby
(09) 376 7530**

Ponsonby Estate Agents Limited



Sizes And Dimensions Are Approximate, Actual May Vary.